

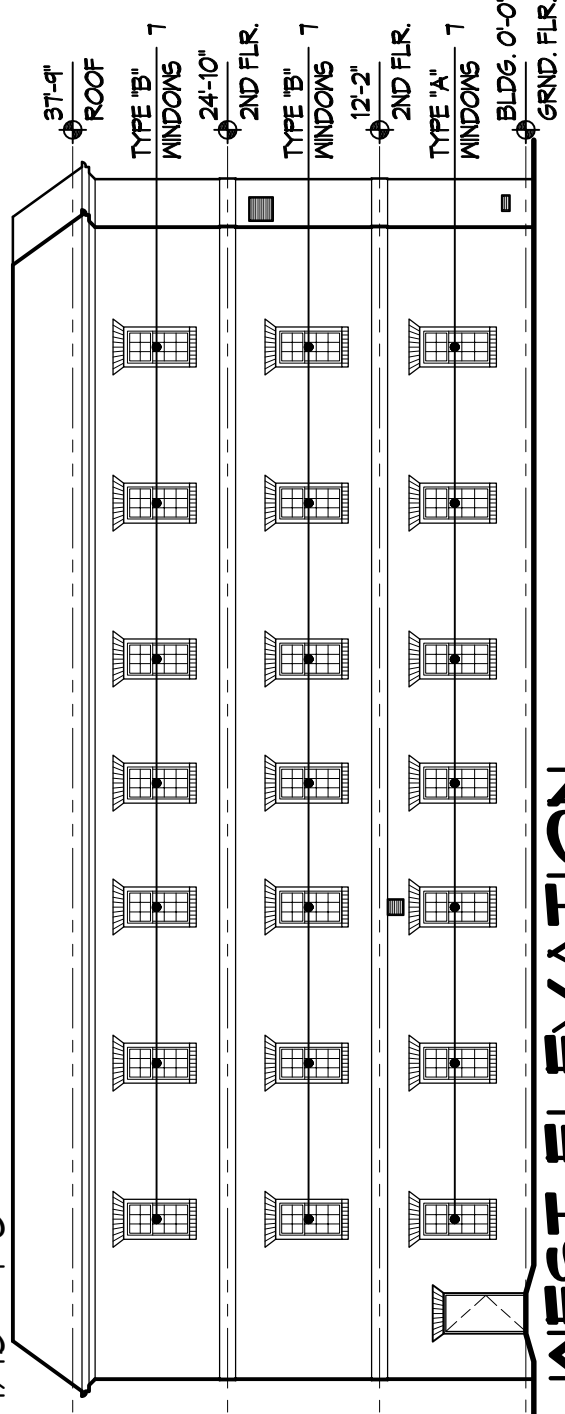
EAST ELEVATION

1/16" = 1'-0"

NOTE:
ALL FIRST FLOOR WINDOWS ARE TYPE 'A' WINDOWS. ALL SECOND AND THIRD FLOOR WINDOWS ARE TYPE 'B' WINDOWS.

SEE A.3 FOR TYPICAL WINDOW ELEVATION AND MULLION/MUNTIN DETAILS

TYPE "B" WIN.
E. & W. TOTAL = 28
TYPE "A" WIN.
E. & W. TOTAL = 14



WEST ELEVATION

1/16" = 1'-0"

02.13.12