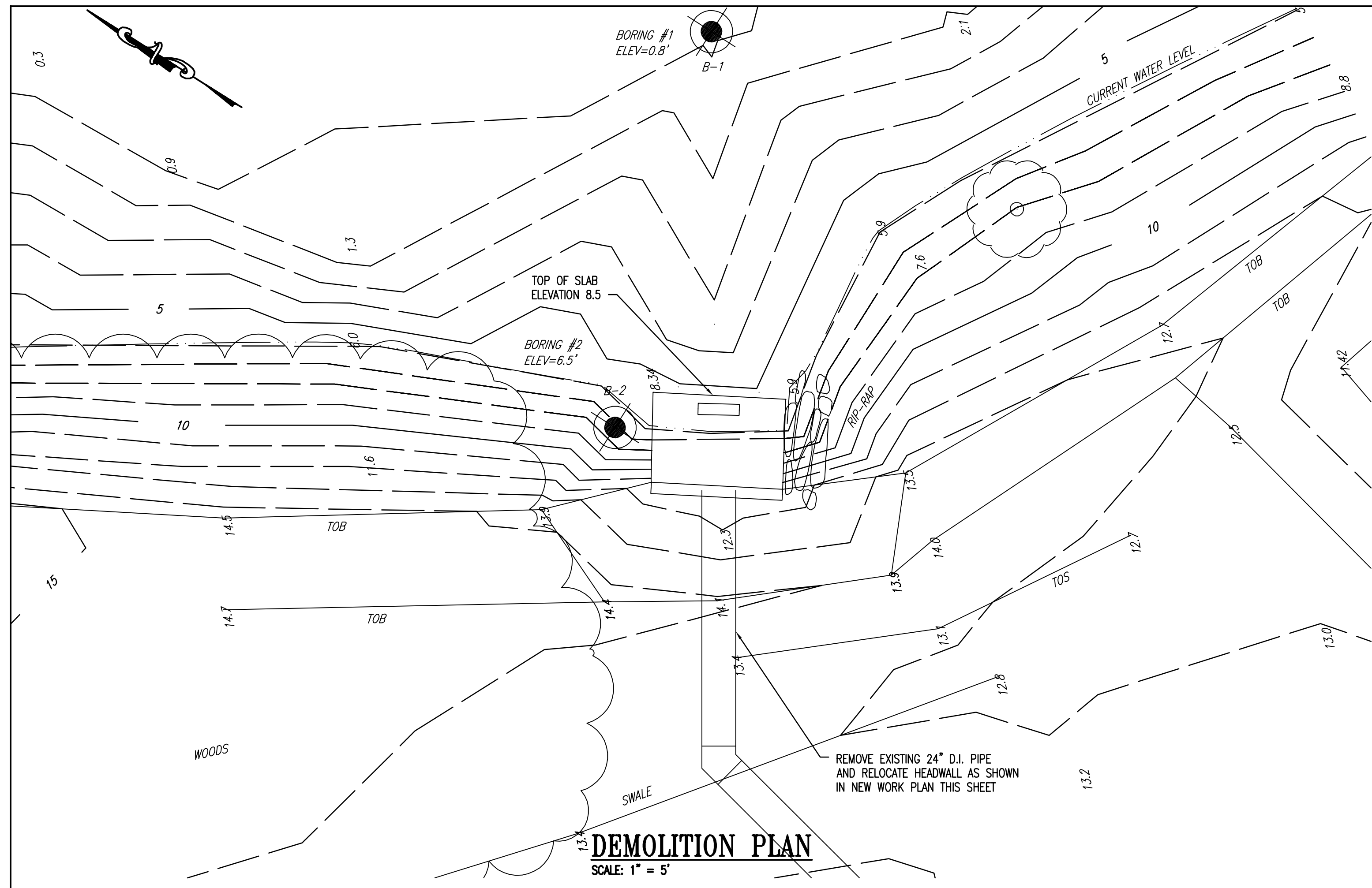
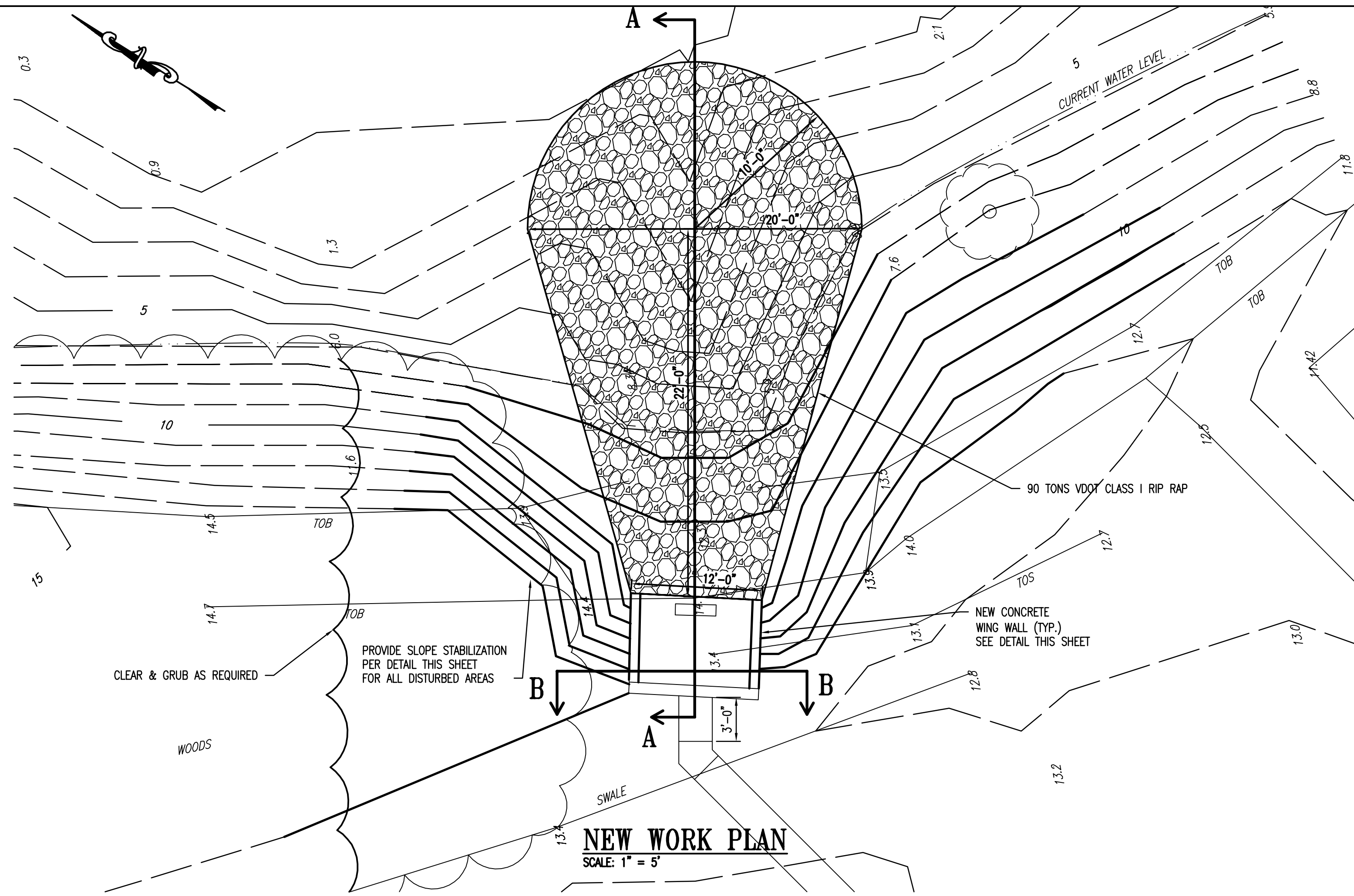


N:\19019-001\Engineering\onestar lake outfall\Crittenden Outfall modifications 8-24-11.DWG Dec 29, 2011 11:32am

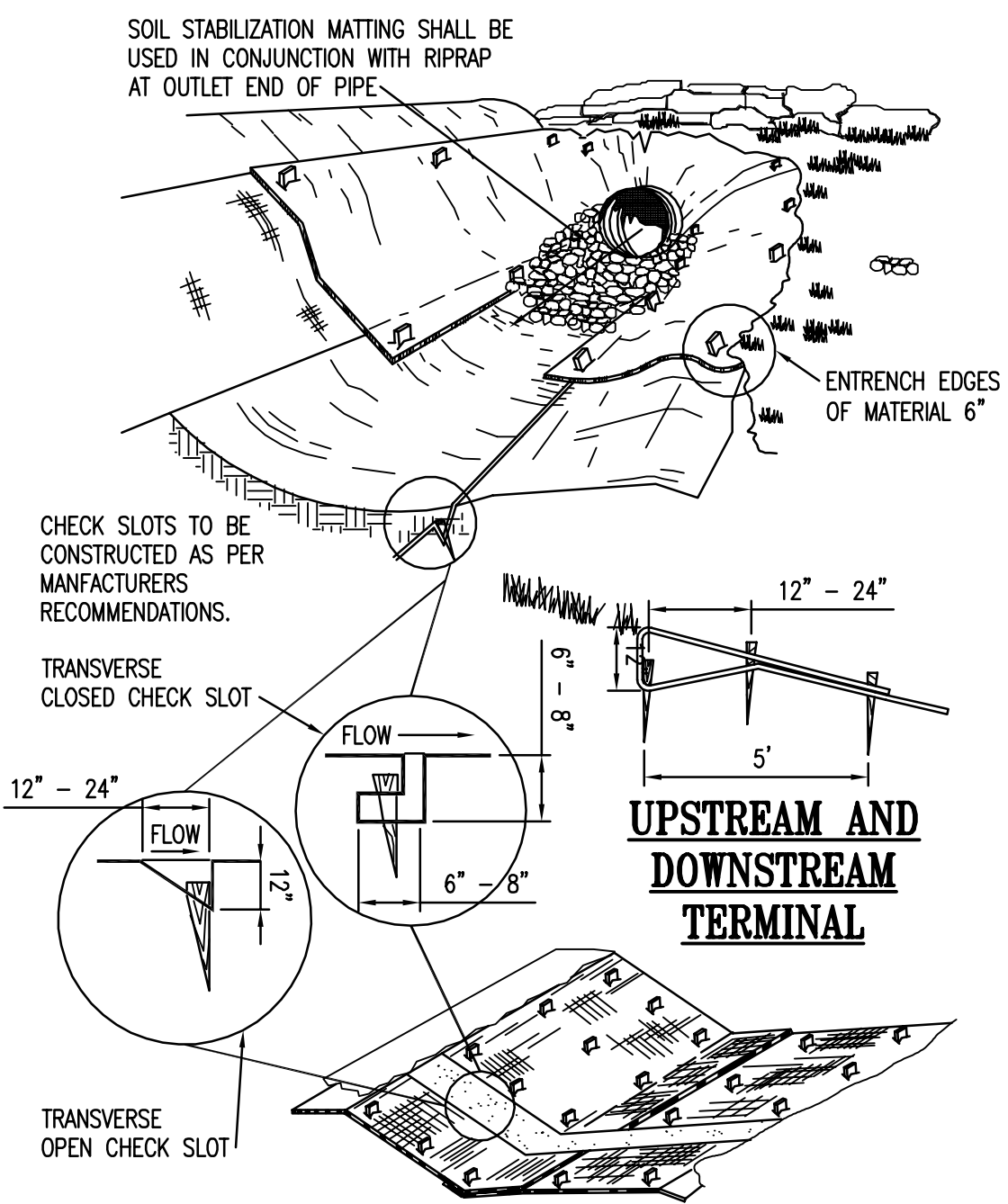


DEMOLITION PLAN
SCALE: 1" = 5'

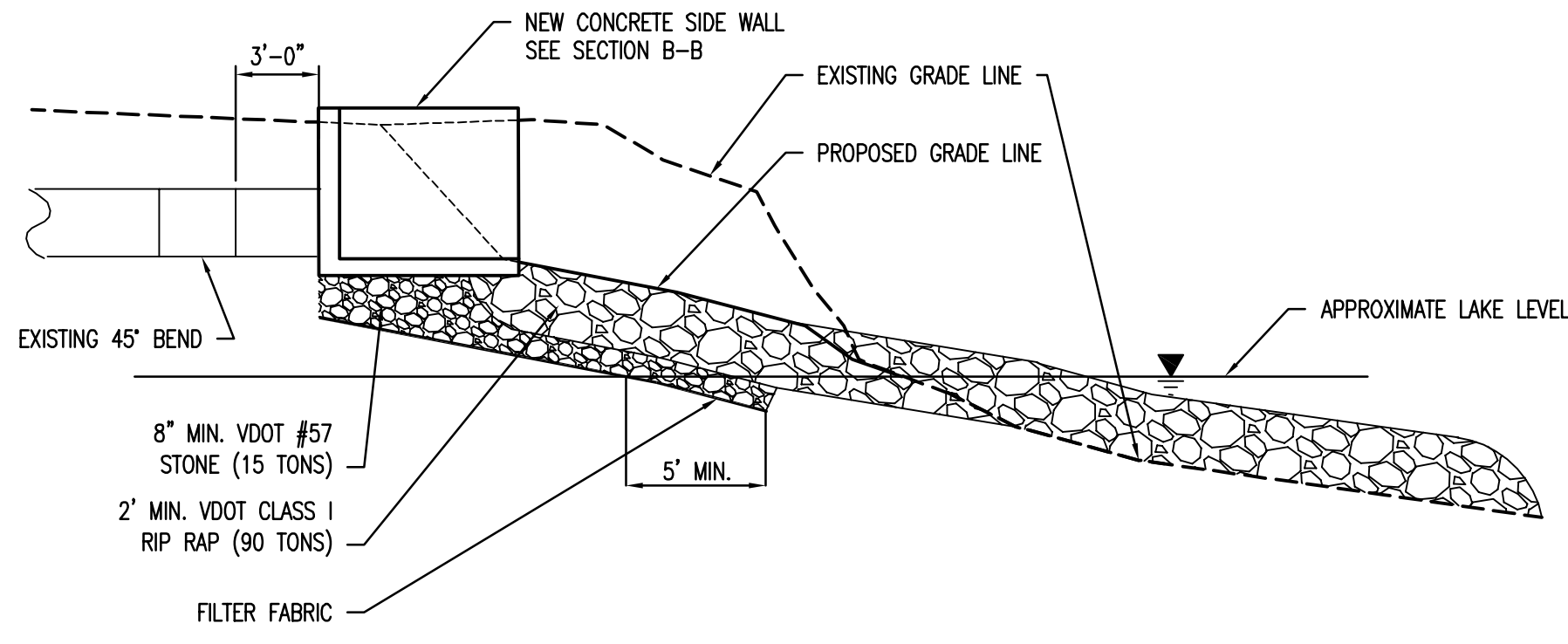
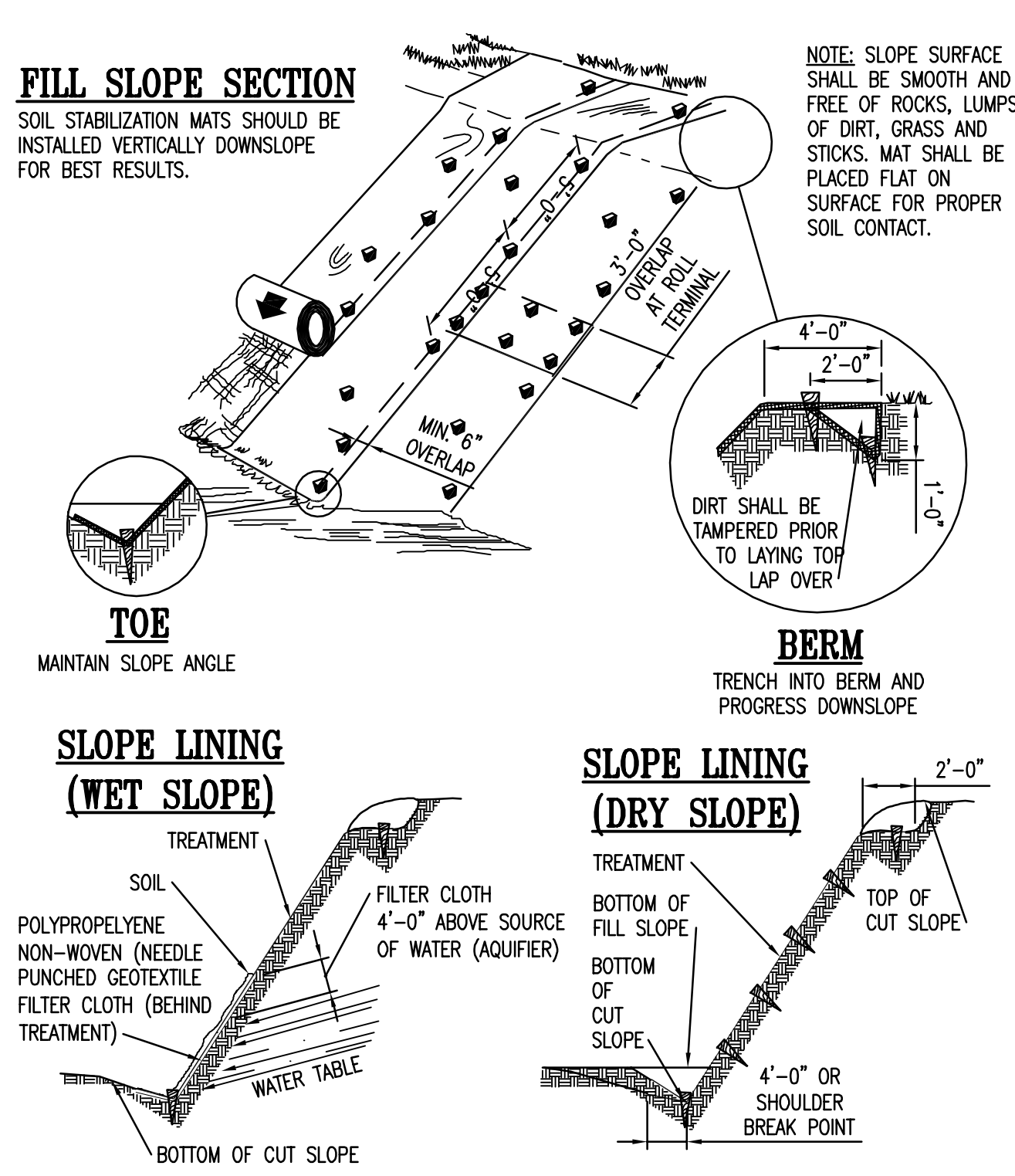


NEW WORK PLAN
SCALE: 1" = 5'

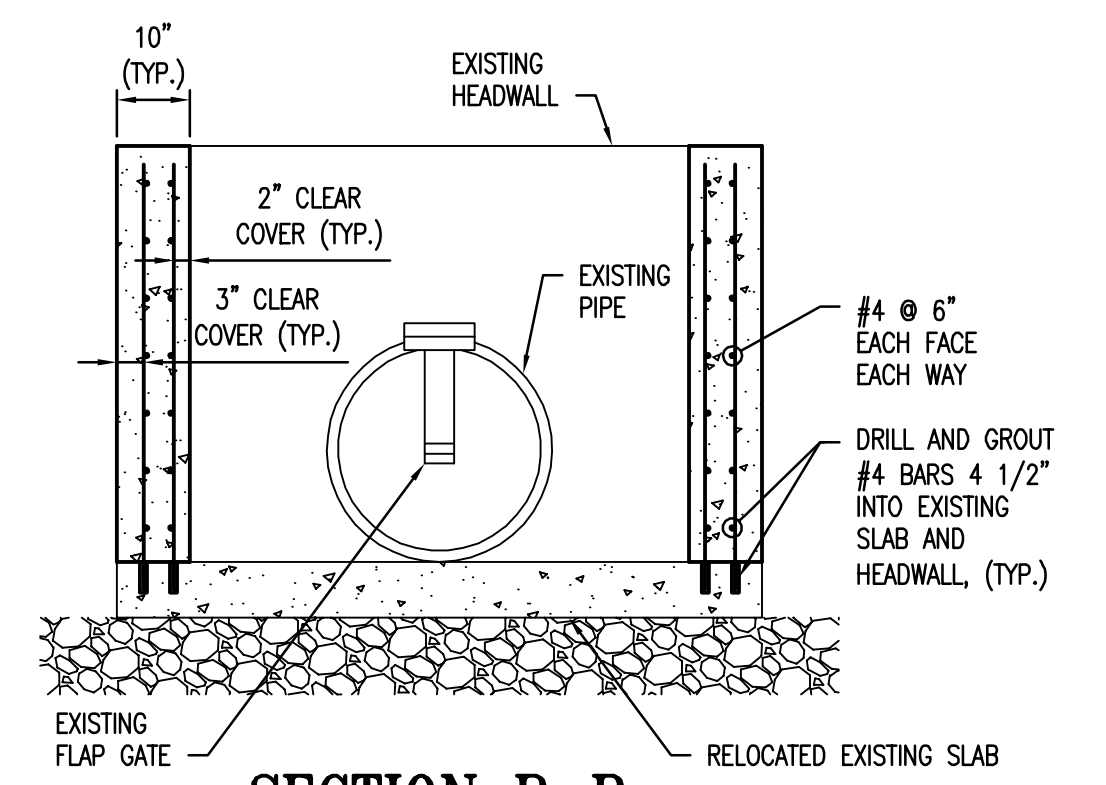
TYPICAL TREATMENT - SOIL STABILIZATION MATTING INSTALLATION



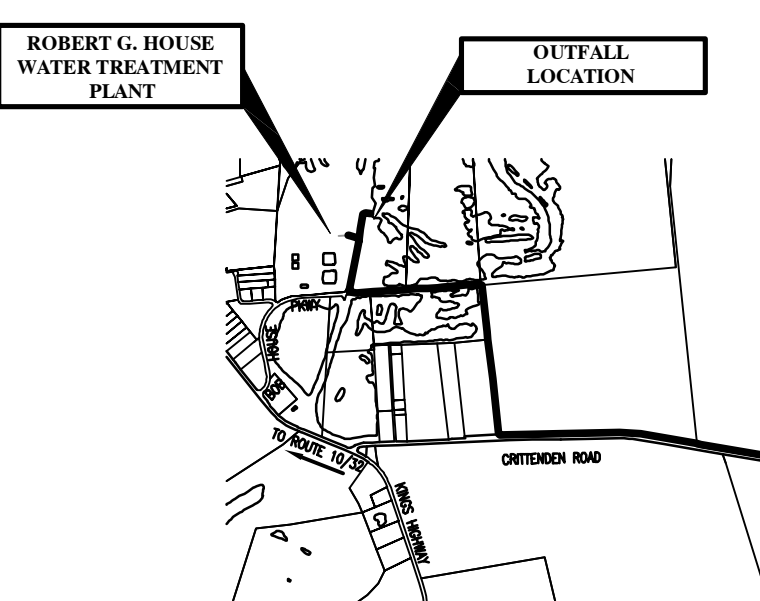
TYPICAL TREATMENT - SOIL STABILIZATION MATTING SLOPE INSTALLATION



SECTION A-A
SCALE: 1" = 5'



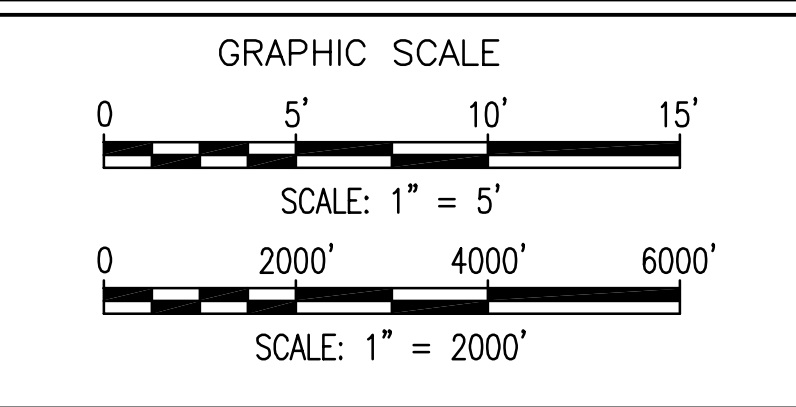
SECTION B-B
NOT TO SCALE



VICINITY MAP
SCALE: 1" = 2000'

- CONCRETE NOTES:**
1. PROVIDE CONCRETE WITH A MINIMUM COMPRESSIVE STRENGTH OF 4500 PSI AT 28 DAYS.
 2. DETAIL AND CONSTRUCT REINFORCED CONCRETE IN ACCORDANCE WITH AMERICAN CONCRETE INSTITUTE ACI 301, "SPECIFICATION FOR STRUCTURAL CONCRETE".
 3. DETAIL REINFORCING STEEL IN ACCORDANCE WITH AMERICAN CONCRETE INSTITUTE SP-66, "ACI DETAILING MANUAL" WHICH INCLUDES ACI 315, "DETAILS AND DETAILING OF CONCRETE REINFORCEMENT".
 4. PROVIDE REINFORCEMENT CONFORMING TO ASTM A 615, GRADE 60, DEFORMED BARS.
 5. CHAMFER ALL EXPOSED CONCRETE EDGES 1/4" UNLESS OTHERWISE NOTED.
 6. PROVIDE SIKADUR ARMATEC 110 BONDING COMPOUND BY SIKA CORPORATION OR APPROVED EQUAL AT ALL LOCATIONS IN WHICH FRESH CONCRETE COMES IN CONTACT WITH CURED CONCRETE.
 7. CONTRACTOR SHALL NOT DAMAGE EXISTING REBAR WHEN DRILLING HOLES FOR NEW REBAR. IF EXISTING REBAR IS ENCOUNTERED DURING DRILLING, SHIFT HOLE A DISTANCE OF 1/2" TO EITHER SIDE.
 8. USE HILT HIT HY 150 MAX ADHESIVE OR APPROVED EQUAL TO GROUT NEW REBAR INTO EXISTING CONCRETE.
- DESIGN LOADS:**
1. LATERAL SOIL LOAD: 90 PSF / LF OF SOIL DEPTH
- CODES AND STANDARDS:**
1. INTERNATIONAL BUILDING CODE IBC (2009)
 2. AMERICAN CONCRETE INSTITUTE ACI-318 (2008), "BUILDING CODE REQUIREMENTS FOR STRUCTURAL CONCRETE".
 3. AMERICAN SOCIETY OF CIVIL ENGINEERS ASCE 7 (2005), "MINIMUM DESIGN LOADS FOR BUILDINGS AND OTHER STRUCTURES".

| REV | DATE | DESCRIPTION |
|-----|------|-------------|
| | | |
| | | |
| | | |
| | | |



WR&A
WHITMAN, REQUARDT AND ASSOCIATES, LLP
ENGINEERS, ARCHITECTS AND PLANNERS
11870 MERCHANTS WALK, SUITE 100
NEWPORT NEWS, VA
PHONE: 1-757-599-5101 FAX: 1-757-599-5320

CITY OF SUFFOLK, VIRGINIA
DEPARTMENT OF PUBLIC UTILITIES
1262 HOLLAND RD
SUFFOLK, VA 23439
PHONE: 1-757-514-7000 FAX: 1-757-923-4762



| | | | | |
|--|------------|------------|-------------------------|-------------------|
| CRITTENDEN WELL TRANSMISSION MAIN | | | | SHEET 1 |
| OUTFALL | | | | |
| SCALE: 1" = 5' | | | | OF 1 |
| DWS: JAI | DRAWN: GIS | CHECK: JAI | DATE: AUGUST 24TH, 2011 | |