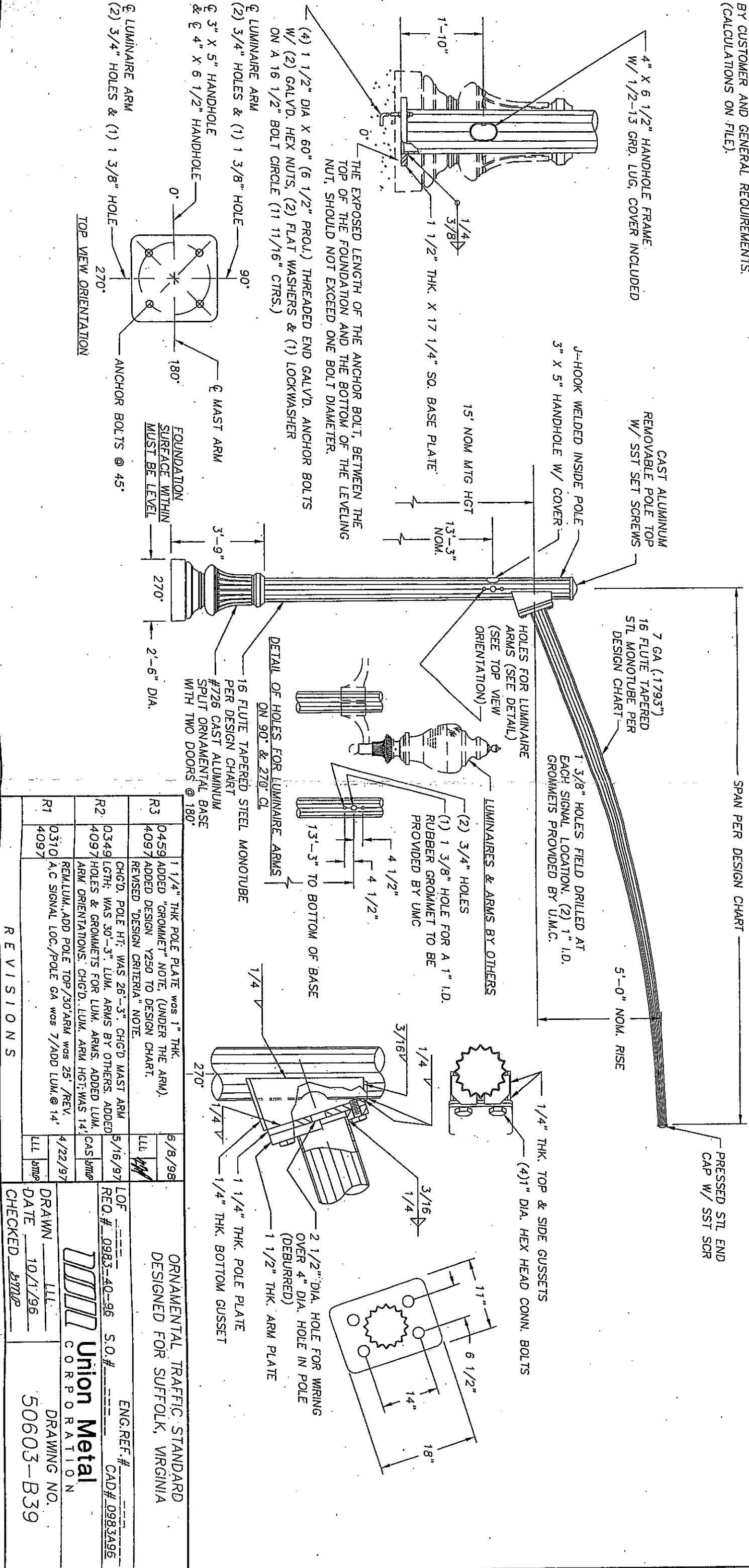


MATERIAL SPECIFICATIONS

- I. & PHYSICAL PROP. OF ASTM A595 GR. A.
- ASTM A36
- N BOLTS: ASTM-A325 GALVD. TO ASTM-A153
- JOLTS: ASTM F1554 GR 55 FULL GALVD. TO ASTM-A153
- CL ANCHOR: ASTM-A563 GR.A GALVD. TO ASTM-A153
- DWE: (STN. STL) AISI 300 SERIES (18-8)
- AL BASE: CAST ALUMINUM AA319F
- FINISH PER SALES ORDER.

IGN. CRITERIA:
 SIGNED IN ACCORDANCE WITH 1994 AASHTO "STANDARD SPECIFICATIONS FOR STRUCTURAL SUPPORTS FOR HIGHWAY SIGNS, LUMINAIRES, AND TRAFFIC SIGNALS" FOR 100 MPH WIND ZONE. STRUCTURES ARE DESIGNED FOR LOADS SPECIFIED BY CUSTOMER AND GENERAL REQUIREMENTS. (CALCULATIONS ON FILE).

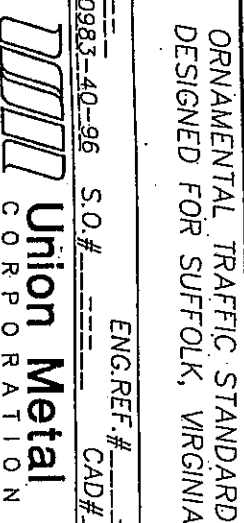


UM CORP. DESIGN NO.	16 FLUTE TAPERED STEEL MONOTUBE POLE	ARM SPAN	TRAFFIC MAST ARM DATA
50603-Y177	3F-12.00" X 9.69" X 16'-6"	30'	7F-9.5" X 5.20" X 30'-9"
50603-Y250	3F-12.00" X 9.69" X 16'-6"	25'	7F-9.00" X 5.40" X 25'-9"

REVISIONS		REVISIONS	
R1	0310 4097	A.C SIGNAL LOC./POLE GA WAS 7/ADD LUM. @ 14'	4/22/97
R2	0349 4097	CHGD. POLE HT. WAS 26'-3" CHGD. MAST ARM LGTH; WAS 30'-5" LUM. ARMS BY OTHERS. ARM ORIENTATIONS: CHGD. LUM. ARM HGT; WAS 14'	5/16/97
R3	0459 4097	1 1/4" THK POLE PLATE WAS 1" THK. ADDED "GROMMET" NOTE, (UNDER THE ARM), ADDED DESIGN Y250 TO DESIGN CHART. REVISED "DESIGN CRITERIA" NOTE.	6/8/98

REQ.#	0983-40-96	S.O.#	
LOF		ENG. REF.#	
CAD#	0983A96		

DRAWN	LLL	DRAWING NO.	50603-B39
DATE	10/1/96		
CHECKED	BMP		



ORNAMENTAL TRAFFIC STANDARD
 DESIGNED FOR SUFFOLK, VIRGINIA