



CITY OF SUFFOLK

EyeMed provides CITY OF SUFFOLK the following utilization reports for your review and to allow us to proactively manage your plan together.

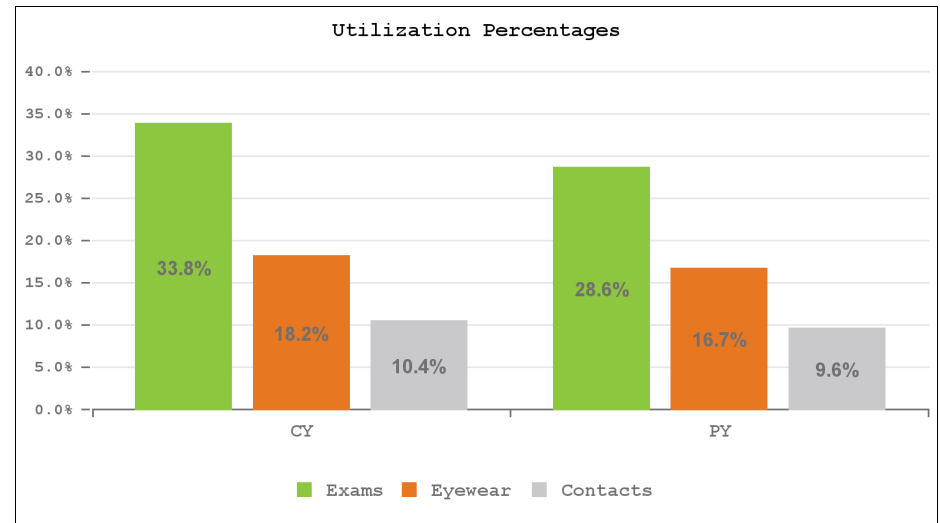
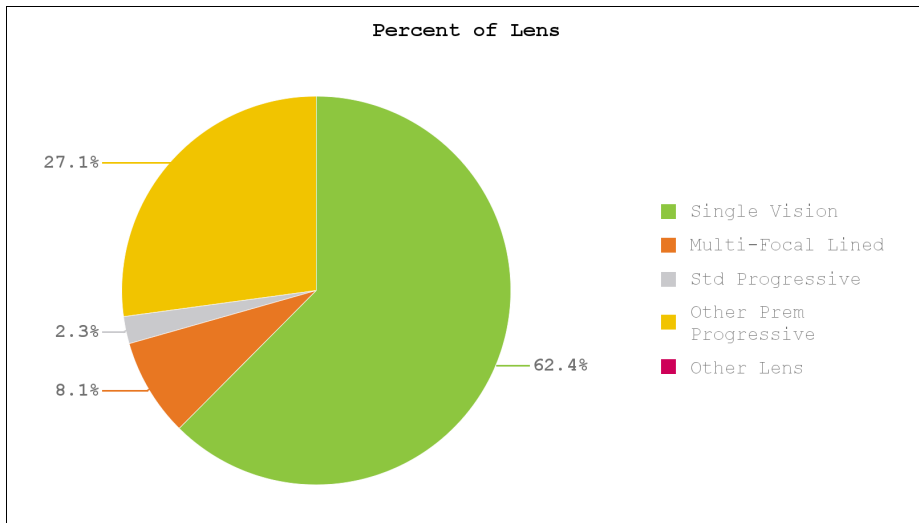
- Utilization - Utilization Percentages & Dollars by Month, Current vs. Prior Year
- Network Utilization - Utilization Percentages by Provider Bands, Current vs. Prior Year
- Plan List - List of Plans Included in Reports

Please contact your Account Manager should you have any questions about your utilization. Thank you for your business.

CITY OF SUFFOLK YTD Member Savings: \$129,110

Maintaining a vision benefit can help minimize your total healthcare costs and helps your employees see and feel their best.

- Roughly 50% of the U.S. population requires corrective lenses as do 80% of those over age 45.
- A simple vision problem (such as eyestrain) can cause an employee to lose up to 15 minutes per day, translating into employers losing more than \$2,000 per year for every employee who suffers from this issue.
- Comprehensive eye exams can provide for early detection of 2 leading causes of significant healthcare costs, diabetes and hypertension. Early detection can allow for earlier treatment and management options for the patient, in turn, leading to possible decreased healthcare costs for you.

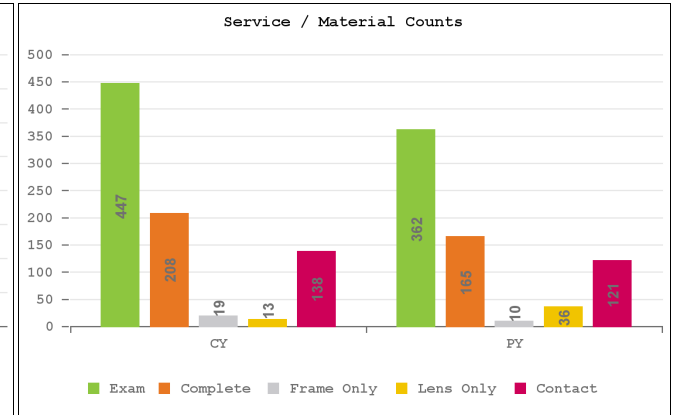
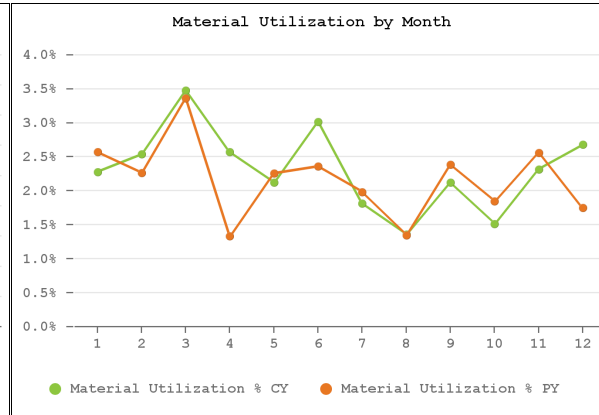
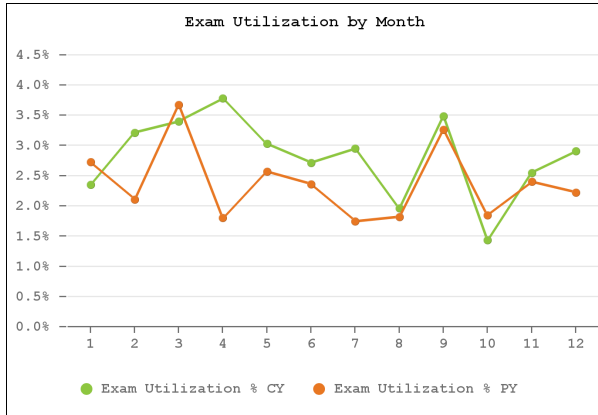




CITY OF SUFFOLK

Utilization

Client Utilization	Subscribers		Members		Members Using Benefit		Exam Utilization				Material Utilization				
	By Month	CY #	PY #	CY #	PY #	CY #	PY #	CY #	CY \$	PY #	PY \$	CY #	CY \$	PY #	PY \$
January		624	601	1,315	1,283	46	48	31	\$1,598	35	\$1,748	30	\$3,832	33	\$3,659
February		630	601	1,337	1,280	54	40	43	\$2,287	27	\$1,471	34	\$4,241	29	\$3,575
March		630	601	1,323	1,278	65	62	45	\$2,375	47	\$2,409	46	\$5,975	43	\$5,158
April		634	599	1,322	1,275	62	31	50	\$2,663	23	\$1,232	34	\$4,719	17	\$2,085
May		635	601	1,319	1,283	49	43	40	\$2,143	33	\$1,736	28	\$3,535	29	\$3,523
June		639	596	1,325	1,269	54	41	36	\$1,914	30	\$1,580	40	\$5,373	30	\$3,670
July		638	592	1,321	1,259	43	34	39	\$2,086	22	\$1,195	24	\$3,041	25	\$3,217
August		640	593	1,323	1,261	35	28	26	\$1,347	23	\$1,239	18	\$3,090	17	\$2,015
September		640	599	1,318	1,256	54	53	46	\$2,406	41	\$2,183	28	\$3,609	30	\$3,761
October		642	600	1,320	1,245	32	32	19	\$1,021	23	\$1,206	20	\$2,297	23	\$2,751
November		624	603	1,293	1,248	47	43	33	\$1,730	30	\$1,590	30	\$3,862	32	\$4,130
December		643	606	1,341	1,257	52	36	39	\$2,020	28	\$1,468	36	\$4,886	22	\$2,805
		635	599	1,321	1,266	593	491	447	\$23,590	362	\$19,057	368	\$48,460	330	\$40,349





CITY OF SUFFOLK

Network Utilization

Network Utilization by Band (CY)		Client Combined (Ex & Matls)		Client Exam Share		Client Mat'l Share	
Location Type	Provider Band	CY %	PY %	CY %	PY %	CY %	PY %
Independent	Independent	51.5%	57.4%	58.4%	63.3%	43.2%	50.9%
Total: Independent		51.5%	57.4%	58.4%	63.3%	43.2%	50.9%
Retail	LensCrafters	16.3%	14.3%	15.2%	13.0%	17.7%	15.8%
	Pearle Vision	4.4%	2.6%	4.3%	2.2%	4.6%	3.0%
	Sears Optical	1.7%	0.9%	0.7%	0.0%	3.0%	1.8%
	JCPenney Optical	0.1%	0.0%	0.0%	0.0%	0.3%	0.0%
	Other Retail	25.4%	24.3%	21.5%	21.5%	30.2%	27.3%
Total: Retail		48.0%	42.1%	41.6%	36.7%	55.7%	47.9%
Out of Network	Out of Network	0.5%	0.6%	0.0%	0.0%	1.1%	1.2%
Total: Out of Network		0.5%	0.6%	0.0%	0.0%	1.1%	1.2%



CITY OF SUFFOLK

Plan List

EyeMed Plan ID	EyeMed Plan Name	Effective Date	Renewal Date	Voluntary Indicator	Plan Type
9793001	CITY OF SUFFOLK	1/1/2011	12/31/2018	Voluntary	Fixed Fee
9793563	CITY OF SUFFOLK COBRA	1/1/2011	12/31/2018	Voluntary	Fixed Fee
9813601	CITY OF SUFFOLK RETIREES	3/1/2011	12/31/2018	Voluntary	Fixed Fee

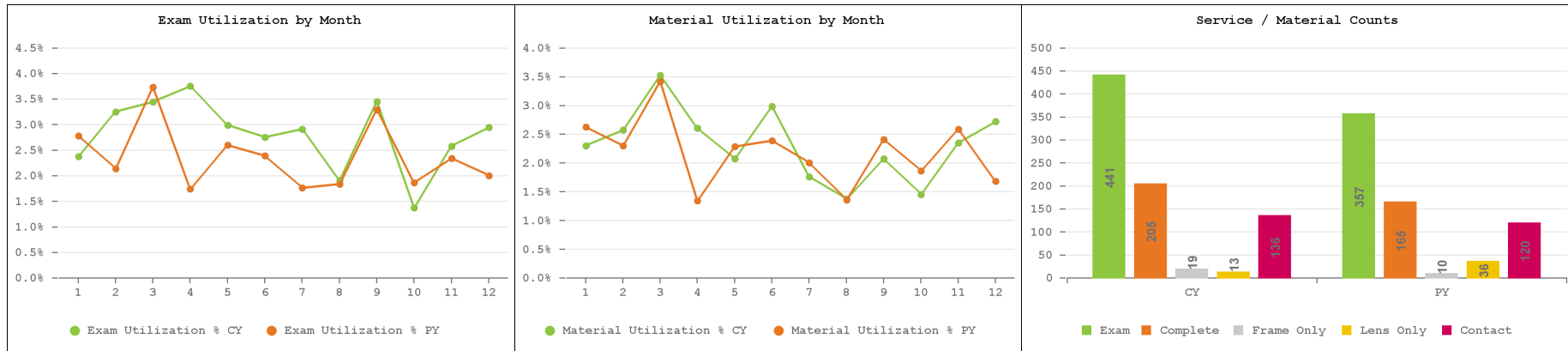


CITY OF SUFFOLK

Utilization
by Plan

Plan ID: 9793001

Client Utilization	Subscribers		Members		Members Using Benefit		Exam Utilization				Material Utilization				
	By Month	CY #	PY #	CY #	PY #	CY #	PY #	CY #	CY \$	PY #	PY \$	CY #	CY \$	PY #	PY \$
January		615	588	1,300	1,255	46	48	31	\$1,598	35	\$1,748	30	\$3,832	33	\$3,659
February		619	590	1,319	1,259	54	40	43	\$2,287	27	\$1,471	34	\$4,241	29	\$3,575
March		619	590	1,304	1,257	65	62	45	\$2,375	47	\$2,409	46	\$5,975	43	\$5,158
April		623	590	1,303	1,259	61	30	49	\$2,608	22	\$1,188	34	\$4,719	17	\$2,085
May		624	592	1,300	1,267	48	43	39	\$2,088	33	\$1,736	27	\$3,403	29	\$3,523
June		627	587	1,305	1,253	53	41	36	\$1,914	30	\$1,580	39	\$5,241	30	\$3,670
July		626	584	1,301	1,245	42	34	38	\$2,032	22	\$1,195	23	\$2,926	25	\$3,217
August		628	585	1,304	1,247	34	28	25	\$1,293	23	\$1,239	18	\$3,090	17	\$2,015
September		629	591	1,300	1,242	52	53	45	\$2,351	41	\$2,183	27	\$3,484	30	\$3,761
October		631	592	1,302	1,231	30	32	18	\$966	23	\$1,206	19	\$2,162	23	\$2,751
November		613	595	1,275	1,234	47	42	33	\$1,730	29	\$1,546	30	\$3,862	32	\$4,130
December		631	598	1,321	1,243	52	33	39	\$2,020	25	\$1,325	36	\$4,886	21	\$2,705
		624	590	1,303	1,249	584	486	441	\$23,262	357	\$18,826	363	\$47,822	329	\$40,249



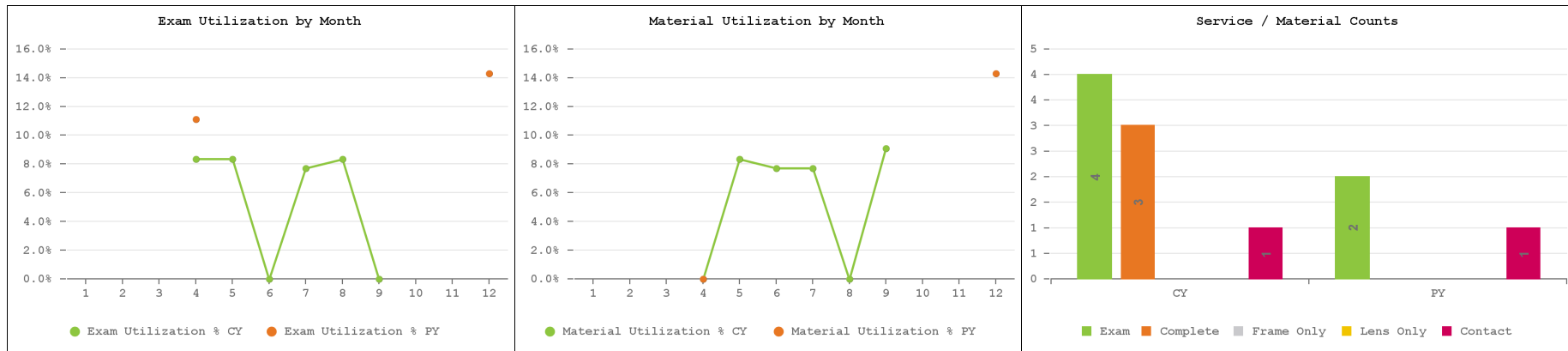


CITY OF SUFFOLK

Utilization
by Plan

Plan ID: 9793563

Client Utilization	Subscribers		Members		Members Using Benefit		Exam Utilization				Material Utilization				
	By Month	CY #	PY #	CY #	PY #	CY #	PY #	CY #	CY \$	PY #	PY \$	CY #	CY \$	PY #	PY \$
January		5	9	8	21	0	0	0	\$0	0	\$0	0	\$0	0	\$0
February		7	7	11	14	0	0	0	\$0	0	\$0	0	\$0	0	\$0
March		7	7	12	14	0	0	0	\$0	0	\$0	0	\$0	0	\$0
April		7	5	12	9	1	1	1	\$55	1	\$44	0	\$0	0	\$0
May		7	5	12	9	1	0	1	\$55	0	\$0	1	\$132	0	\$0
June		8	5	13	9	1	0	0	\$0	0	\$0	1	\$132	0	\$0
July		8	4	13	7	1	0	1	\$54	0	\$0	1	\$115	0	\$0
August		8	4	12	7	1	0	1	\$54	0	\$0	0	\$0	0	\$0
September		7	4	11	7	1	0	0	\$0	0	\$0	1	\$125	0	\$0
October		7	4	11	7	0	0	0	\$0	0	\$0	0	\$0	0	\$0
November		7	4	11	7	0	0	0	\$0	0	\$0	0	\$0	0	\$0
December		8	4	13	7	0	1	0	\$0	1	\$55	0	\$0	1	\$100
		14	31	23	59	6	2	4	\$218	2	\$99	4	\$503	1	\$100



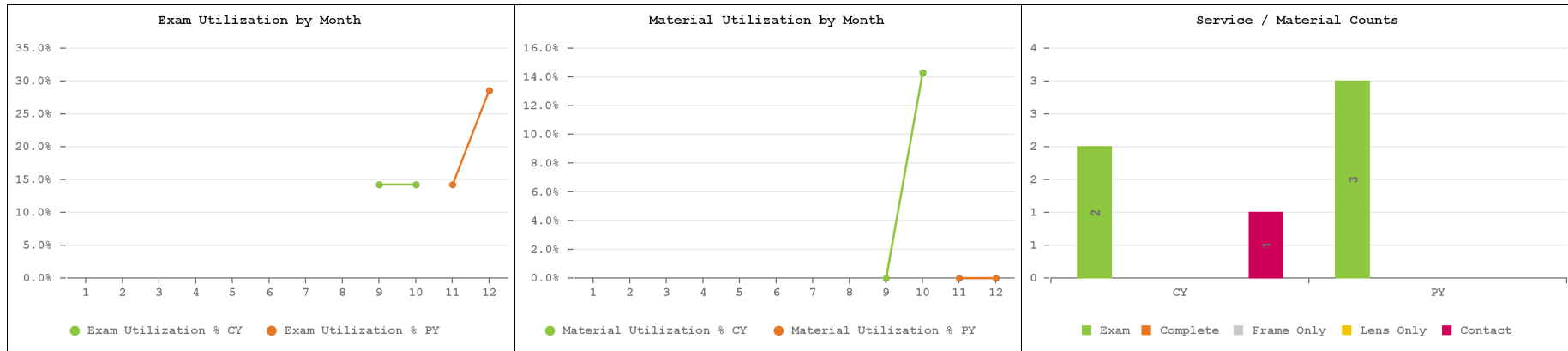


CITY OF SUFFOLK

Utilization
by Plan

Plan ID: 9813601

Client Utilization	Subscribers		Members		Members Using Benefit		Exam Utilization				Material Utilization				
	By Month	CY #	PY #	CY #	PY #	CY #	PY #	CY #	CY \$	PY #	PY \$	CY #	CY \$	PY #	PY \$
January		4	4	7	7	0	0	0	\$0	0	\$0	0	\$0	0	\$0
February		4	4	7	7	0	0	0	\$0	0	\$0	0	\$0	0	\$0
March		4	4	7	7	0	0	0	\$0	0	\$0	0	\$0	0	\$0
April		4	4	7	7	0	0	0	\$0	0	\$0	0	\$0	0	\$0
May		4	4	7	7	0	0	0	\$0	0	\$0	0	\$0	0	\$0
June		4	4	7	7	0	0	0	\$0	0	\$0	0	\$0	0	\$0
July		4	4	7	7	0	0	0	\$0	0	\$0	0	\$0	0	\$0
August		4	4	7	7	0	0	0	\$0	0	\$0	0	\$0	0	\$0
September		4	4	7	7	1	0	1	\$55	0	\$0	0	\$0	0	\$0
October		4	4	7	7	2	0	1	\$55	0	\$0	1	\$135	0	\$0
November		4	4	7	7	0	1	0	\$0	1	\$44	0	\$0	0	\$0
December		4	4	7	7	0	2	0	\$0	2	\$88	0	\$0	0	\$0
		24	24	42	42	3	3	2	\$110	3	\$132	1	\$135	0	\$0





CITY OF SUFFOLK

Network Utilization by Plan

Plan ID: 9793001

Network Utilization by Band (CY)		Client Combined (Ex & Matls)		Client Exam Share		Client Mat'l Share	
Location Type	Provider Band	CY %	PY %	CY %	PY %	CY %	PY %
Independent	Independent	51.5%	57.6%	58.3%	63.9%	43.3%	50.8%
Total: Independent		51.5%	57.6%	58.3%	63.9%	43.3%	50.8%
Retail	LensCrafters	16.5%	14.1%	15.4%	12.6%	17.9%	15.8%
	Pearle Vision	4.5%	2.6%	4.3%	2.2%	4.7%	3.0%
	Sears Optical	1.6%	0.9%	0.7%	0.0%	2.8%	1.8%
	JCPenney Optical	0.1%	0.0%	0.0%	0.0%	0.3%	0.0%
	Other Retail	25.2%	24.2%	21.3%	21.3%	30.0%	27.4%
Total: Retail		48.0%	41.8%	41.7%	36.1%	55.6%	48.0%
Out of Network	Out of Network	0.5%	0.6%	0.0%	0.0%	1.1%	1.2%
Total: Out of Network		0.5%	0.6%	0.0%	0.0%	1.1%	1.2%



CITY OF SUFFOLK

Network Utilization by Plan

Plan ID: **9793563**

Network Utilization by Band (CY)		Client Combined (Ex & Matls)		Client Exam Share		Client Mat'l Share	
Location Type	Provider Band	CY %	PY %	CY %	PY %	CY %	PY %
Independent	Independent	37.5%	66.7%	50.0%	50.0%	25.0%	100.0%
Total: Independent		37.5%	66.7%	50.0%	50.0%	25.0%	100.0%
Retail	LensCrafters	0.0%	33.3%	0.0%	50.0%	0.0%	0.0%
	Sears Optical	12.5%	0.0%	0.0%	0.0%	25.0%	0.0%
	Other Retail	50.0%	0.0%	50.0%	0.0%	50.0%	0.0%
Total: Retail		62.5%	33.3%	50.0%	50.0%	75.0%	0.0%



CITY OF SUFFOLK

Network Utilization by Plan

Plan ID: 9813601

Network Utilization by Band (CY)		Client Combined (Ex & Matls)		Client Exam Share		Client Mat'l Share	
Location Type	Provider Band	CY %	PY %	CY %	PY %	CY %	PY %
Independent	Independent	100.0%	0.0%	100.0%	0.0%	100.0%	0.0%
Total: Independent		100.0%	0.0%	100.0%	0.0%	100.0%	0.0%
Retail	LensCrafters	0.0%	33.3%	0.0%	33.3%	0.0%	0.0%
	Other Retail	0.0%	66.7%	0.0%	66.7%	0.0%	0.0%
Total: Retail		0.0%	100.0%	0.0%	100.0%	0.0%	0.0%