



CITY OF SUFFOLK

P.O. BOX 1858, SUFFOLK, VA, 23439-1858, T: (757) 514-7520; FAX (757) 514-7524

ADDENDUM NO. 2

City of Suffolk
IFB #16037-JS
February 22, 2016

Purchasing Division
442 Market Street, Room 1086
Suffolk, VA 23434-5237
Phone: (757) 514-7520 / Fax: (757) 514-7524
<http://www.suffolkva.us/purchasing>

The Invitation for Bids (IFB) for 16037-JS Obici Place Main Street Improvements for the Department of Economic Development has been amended as follows:

Q1: Plan Sheet CT501 Note #33 Indicates the requirement to pay a Traffic Signal Inspection Fee, this fee has typically been \$25,000.00 per intersection. Will this note apply to this project?

A1: **The Traffic Signal Inspection Fee will be paid by the Economic Development Authority.**

Q2: Bid Item #107 Natural Gas Service Tap Fee – The City has always taken care of this in the past. I made some calls and found out that Columbia Gas does not have Natural Gas in this area. Virginia Natural Gas does not have Natural Gas in this area, but has future plans to move Natural Gas into this area. The problem is if the fee includes running gas pipe one mile or maybe 5 miles, what would that cost be? We would suggest to delete this item or change it to a maximum alliance to get the natural gas installed to the site.

A2: **Virginia Natural Gas is in the vicinity of the site and is within the right of way on the east side of Main Street.**

Q3: Will the City pay for Stored Materials?

A3: **Stored materials may be paid for in accordance with Section 109.09 of the VDOT Road and Bridge Specifications if requested. Each request will be reviewed against the specifications and determined on a case by case basis. The City will not pay for storage costs of materials.**

Q4: Are the traffic signal luminaire arms to be 12' as shown on the signal plans or 14' per note #30 on sheet CT501?

A4: Traffic signal luminaire arms shall be 14' to match CT501

Q5: Bid item #102 Junction box JB-S1, The bid sheet indicates a quantity of 3 each, there is 1 each on the plan sheet.

A5: Please use the quantity of 1. The two additional JB-S1 are incidental to the cost of the SE-5 Electrical Service

Q6: Plan sheet CT101 Note #1 indicates the Pan/Tilt/Zoom Camera to be installed on Pole "A". The Pole Schedule indicates the camera to be installed on Pole "C". The plan has the symbol for the camera to be on Pole "C". Which is correct?

A6: PTZ Camera should be mounted to Pole A.

Q7: Plan sheet CT501 indicates the use of Opticom System GPS equipment. Is this correct or will Opticom #721 Infrared Detectors be required?

A7: Opticom 721 Infrared detectors are required, not GPS.

Q8: How will raised snow plow marker be paid for removal and replacement?

A8: Removal of the existing snow plowable markers shall be incidental to flexible pavement planning. Replacement of the snow plowable pavement markers has been added to the bid tabs.

REVISIONS TO CONTRACT DRAWINGS:

Sheet CA001

DELETE Sheet CA001 and REPLACE WITH revised Sheet CA001 attached.

Sheet CT101

DELETE Sheet CT101 and REPLACE WITH revised Sheet CT101 attached.

Sheet CT501

DELETE Sheet CT501 and REPLACE WITH revised Sheet CT501 attached.

REVISIONS TO SPECIFICATIONS:

Pages 16-22, Bid Form

DELETE the Bid Form pages 16-22 and REPLACE WITH the Bid Form (Addendum No. 2) attached.

- Bid Item #52 has been added for Snow Plowable Raised Pavement Marker.
- Bid Item #65 and #67, corrected length of Luminaire Arm to 14'.
- Bid Item #77 "Video Detection Equipment" has been removed. The full video detection system, including advanced detection cameras should be captured in Bid Item #79 "Aldis Gridsmart Camera (Vehicle Detection)." This shall be inclusive of all required hardware and cameras.
- Bid Item #102, quantity has been revised.

Page 68, General Conditions, Partial Payments

DELETE

- (A) PARTIAL PAYMENTS WILL BE MADE EACH MONTH FOR THE QUANTITY OF WORK PERFORMED IN THE PRECEDING MONTH LESS FIVE PERCENT (5%) TO BE RETAINED UNTIL FINAL COMPLETION OF THE WORK.

REQUESTS FOR PAYMENTS SHALL BE SUBMITTED TO THE OWNER BY THE 10TH OF THE MONTH FOR PAYMENT BY MONTH END. REQUESTS FOR PAYMENTS SHALL BE SUBMITTED IN A FORMAT ACCEPTABLE TO THE DEPARTMENT OF PUBLIC UTILITIES AND SHALL INCLUDE:

1. CONTRACTOR'S ESTIMATE AND INVOICE TRANSMITTAL SHEET
2. STANDARD CONTRACTOR'S ESTIMATE VOUCHER.

REPLACE with

- (A) PARTIAL PAYMENTS WILL BE MADE EACH MONTH FOR THE QUANTITY OF WORK PERFORMED IN THE PRECEDING MONTH LESS FIVE PERCENT (5%) TO BE RETAINED UNTIL FINAL COMPLETION OF THE WORK.

REQUESTS FOR PAYMENTS SHALL BE SUBMITTED TO THE OWNER BY THE 10TH OF THE MONTH FOR PAYMENT BY MONTH END. REQUESTS FOR PAYMENTS SHALL BE SUBMITTED IN A FORMAT ACCEPTABLE TO THE DEPARTMENT OF PUBLIC WORKS AND SHALL INCLUDE:

1. CONTRACTOR'S ESTIMATE AND INVOICE TRANSMITTAL SHEET
2. STANDARD CONTRACTOR'S ESTIMATE VOUCHER.

Traffic Signal Specifications & Appendices, Appendix A, List of Drawings

DELETE List of Drawings and REPLACE WITH revised List of Drawings (Addendum No. 2) attached.

Contract Officer:


Jay Smigielski, Purchasing Agent,

Receipt of Addendum shall be acknowledged on the BID FORM. Failure to acknowledge addendum will be justification for deeming the proposal non-responsive.

All other specifications, provisions, terms and conditions are unchanged.

If you have any questions regarding this Addendum, please contact Jay Smigielski, Purchasing Agent at jsmigielski@suffolkva.us

OBICI PLACE MAIN STREET ENGINEERING PLANS

FOR
CITY OF SUFFOLK ECONOMIC
DEVELOPMENT AUTHORITY

SUFFOLK, VIRGINIA

12/10/2015

UTILITY AND GOVERNING AGENCIES CONTACT LIST

- WATER**
SUFFOLK WATER
443 WEST WATERWAY ST
SUFFOLK, VA 23109
(757) 541-7700
CONTACT: JOHN CAMPBELL
- SEWER**
SUFFOLK SEWER
443 WEST WATERWAY ST
SUFFOLK, VA 23109
(757) 541-7700
CONTACT: JOHN CAMPBELL
- STREET LIGHTS**
SUFFOLK STREET LIGHTS
443 WEST WATERWAY ST
SUFFOLK, VA 23109
(757) 541-7700
CONTACT: JOHN CAMPBELL
- TRAFFIC SIGNALS**
SUFFOLK TRAFFIC SIGNALS
443 WEST WATERWAY ST
SUFFOLK, VA 23109
(757) 541-7700
CONTACT: JOHN CAMPBELL
- STREET CLOSURES**
SUFFOLK STREET CLOSURES
443 WEST WATERWAY ST
SUFFOLK, VA 23109
(757) 541-7700
CONTACT: JOHN CAMPBELL
- PLANNING**
SUFFOLK PLANNING
443 WEST WATERWAY ST
SUFFOLK, VA 23109
(757) 541-7700
CONTACT: JOHN CAMPBELL
- PERMITS**
SUFFOLK PERMITS
443 WEST WATERWAY ST
SUFFOLK, VA 23109
(757) 541-7700
CONTACT: JOHN CAMPBELL

VICINITY MAP



SHEET INDEX

Sheet Number	Sheet Title	REV.
0100	CONTRACT SHEET	
0110	GENERAL NOTE	
0120	GENERAL NOTES	
0130	GENERAL NOTES	
0140	GENERAL NOTES	
0150	GENERAL NOTES	
0160	GENERAL NOTES	
0170	GENERAL NOTES	
0180	GENERAL NOTES	
0190	GENERAL NOTES	
0200	GENERAL NOTES	
0210	GENERAL NOTES	
0220	GENERAL NOTES	
0230	GENERAL NOTES	
0240	GENERAL NOTES	
0250	GENERAL NOTES	
0260	GENERAL NOTES	
0270	GENERAL NOTES	
0280	GENERAL NOTES	
0290	GENERAL NOTES	
0300	GENERAL NOTES	
0310	GENERAL NOTES	
0320	GENERAL NOTES	
0330	GENERAL NOTES	
0340	GENERAL NOTES	
0350	GENERAL NOTES	
0360	GENERAL NOTES	
0370	GENERAL NOTES	
0380	GENERAL NOTES	
0390	GENERAL NOTES	
0400	GENERAL NOTES	
0410	GENERAL NOTES	
0420	GENERAL NOTES	
0430	GENERAL NOTES	
0440	GENERAL NOTES	
0450	GENERAL NOTES	
0460	GENERAL NOTES	
0470	GENERAL NOTES	
0480	GENERAL NOTES	
0490	GENERAL NOTES	
0500	GENERAL NOTES	
0510	GENERAL NOTES	
0520	GENERAL NOTES	
0530	GENERAL NOTES	
0540	GENERAL NOTES	
0550	GENERAL NOTES	
0560	GENERAL NOTES	
0570	GENERAL NOTES	
0580	GENERAL NOTES	
0590	GENERAL NOTES	
0600	GENERAL NOTES	
0610	GENERAL NOTES	
0620	GENERAL NOTES	
0630	GENERAL NOTES	
0640	GENERAL NOTES	
0650	GENERAL NOTES	
0660	GENERAL NOTES	
0670	GENERAL NOTES	
0680	GENERAL NOTES	
0690	GENERAL NOTES	
0700	GENERAL NOTES	
0710	GENERAL NOTES	
0720	GENERAL NOTES	
0730	GENERAL NOTES	
0740	GENERAL NOTES	
0750	GENERAL NOTES	
0760	GENERAL NOTES	
0770	GENERAL NOTES	
0780	GENERAL NOTES	
0790	GENERAL NOTES	
0800	GENERAL NOTES	
0810	GENERAL NOTES	
0820	GENERAL NOTES	
0830	GENERAL NOTES	
0840	GENERAL NOTES	
0850	GENERAL NOTES	
0860	GENERAL NOTES	
0870	GENERAL NOTES	
0880	GENERAL NOTES	
0890	GENERAL NOTES	
0900	GENERAL NOTES	
0910	GENERAL NOTES	
0920	GENERAL NOTES	
0930	GENERAL NOTES	
0940	GENERAL NOTES	
0950	GENERAL NOTES	
0960	GENERAL NOTES	
0970	GENERAL NOTES	
0980	GENERAL NOTES	
0990	GENERAL NOTES	
1000	GENERAL NOTES	

SCALE: 1" = 200' (Horizontal)
1" = 100' (Vertical)
City of Suffolk Project Number: 02314-05

ROADWAY DESIGN

ROADWAY DESIGN	DESIGN SPEED	STREET
MAJOR STREET	40	25

WARNING!
THE CONTRACTOR IS TO USE EXTREME
EXISTING WATER MAINS IN ALL AREAS
WHERE FALL DEPTH PAVEMENT
REPLACEMENT OCCURS

ENGINEER

ENGINEER
KIMLEY-HORN AND ASSOCIATES, INC.
4500 MARKET ST
SUFFOLK, VA 23109
TEL: (757) 331-8000
CONTACT: BOB BULLMAN, P.E.

ENGINEER

ENGINEER
KIMLEY-HORN AND ASSOCIATES, INC.
4500 MARKET ST
SUFFOLK, VA 23109
TEL: (757) 331-8000
CONTACT: BOB BULLMAN, P.E.

ENGINEER

ENGINEER
KIMLEY-HORN AND ASSOCIATES, INC.
4500 MARKET ST
SUFFOLK, VA 23109
TEL: (757) 331-8000
CONTACT: BOB BULLMAN, P.E.

ENGINEER

ENGINEER
KIMLEY-HORN AND ASSOCIATES, INC.
4500 MARKET ST
SUFFOLK, VA 23109
TEL: (757) 331-8000
CONTACT: BOB BULLMAN, P.E.

ENGINEER

ENGINEER
KIMLEY-HORN AND ASSOCIATES, INC.
4500 MARKET ST
SUFFOLK, VA 23109
TEL: (757) 331-8000
CONTACT: BOB BULLMAN, P.E.

ENGINEER

ENGINEER
KIMLEY-HORN AND ASSOCIATES, INC.
4500 MARKET ST
SUFFOLK, VA 23109
TEL: (757) 331-8000
CONTACT: BOB BULLMAN, P.E.

ENGINEER

ENGINEER
KIMLEY-HORN AND ASSOCIATES, INC.
4500 MARKET ST
SUFFOLK, VA 23109
TEL: (757) 331-8000
CONTACT: BOB BULLMAN, P.E.

ENGINEER

ENGINEER
KIMLEY-HORN AND ASSOCIATES, INC.
4500 MARKET ST
SUFFOLK, VA 23109
TEL: (757) 331-8000
CONTACT: BOB BULLMAN, P.E.

ENGINEER

ENGINEER
KIMLEY-HORN AND ASSOCIATES, INC.
4500 MARKET ST
SUFFOLK, VA 23109
TEL: (757) 331-8000
CONTACT: BOB BULLMAN, P.E.

ENGINEER

ENGINEER
KIMLEY-HORN AND ASSOCIATES, INC.
4500 MARKET ST
SUFFOLK, VA 23109
TEL: (757) 331-8000
CONTACT: BOB BULLMAN, P.E.

ENGINEER

ENGINEER
KIMLEY-HORN AND ASSOCIATES, INC.
4500 MARKET ST
SUFFOLK, VA 23109
TEL: (757) 331-8000
CONTACT: BOB BULLMAN, P.E.

Kimley-Horn
4500 Market Street, Suite 200, Norfolk, VA 23513
Tel: 757-331-8000 Fax: 757-331-8001
www.kimley-horn.com

PLAN STATUS

DATE	REVISION	DESCRIPTION
12/10/2015	001	1ST CITY SUBMITTAL
12/10/2015	002	2ND CITY SUBMITTAL
12/10/2015	003	3RD CITY SUBMITTAL
12/10/2015	004	4TH CITY SUBMITTAL

RELEASED FOR STAKEOUT

DATE: _____ FULLY APPROVED

DATE: _____ RELEASED ONLY FOR FOLLOWING APPROVED:

KIMLEY-HORN AND ASSOCIATES, INC.

OBICI PLACE MAIN STREET
PREPARED FOR
CITY OF SUFFOLK ECONOMIC
DEVELOPMENT AUTHORITY

PROJECT NUMBER: CA001

TOTAL SHEETS: 38

CITY SITE PLAN # EP-2015-00005

PLAN REVISIONS

REV.	DATE	REVISIONS
1	12/23/15	SITE CORRD BY REV. & SOCIAL CORRD WITH DWP
2	01/13/16	LANDING AND DRAINAGE REVISION

COVER SHEET

12/10/2015

11/10/2015

SIGNATURE BLOCK FOR CITY USE

DATE: _____

APPROVED

City of Suffolk

DATE: _____

REVISIONS:

12/10/2015

11/10/2015

12/10/2015

11/10/2015

OBICI PLACE MAIN STREET
PREPARED FOR
CITY OF SUFFOLK ECONOMIC
DEVELOPMENT AUTHORITY

PROJECT NUMBER: CA001

TOTAL SHEETS: 38

CITY SITE PLAN # EP-2015-00005

PLAN REVISIONS

REV.	DATE	REVISIONS
1	12/23/15	SITE CORRD BY REV. & SOCIAL CORRD WITH DWP
2	01/13/16	LANDING AND DRAINAGE REVISION

COVER SHEET

12/10/2015

11/10/2015

SIGNATURE BLOCK FOR CITY USE

DATE: _____

APPROVED

City of Suffolk

DATE: _____

REVISIONS:

12/10/2015

11/10/2015

12/10/2015

11/10/2015

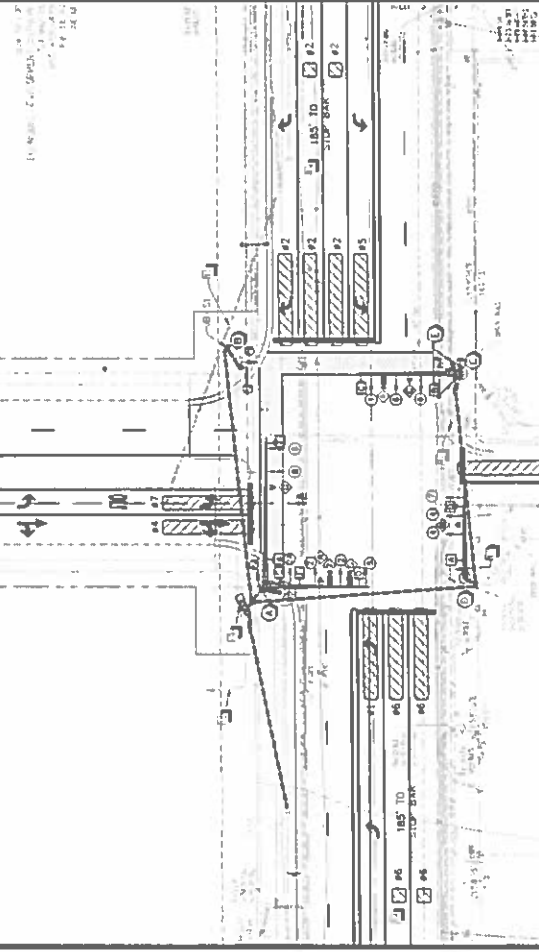
SIGNAL PLAN AT
 NORTHGATE LANE

120210010
 DATE: 01/26/2010
 DRAWN BY: [unintelligible]
 CHECKED BY: [unintelligible]
 SCALE: AS SHOWN
 PROJECT: [unintelligible]

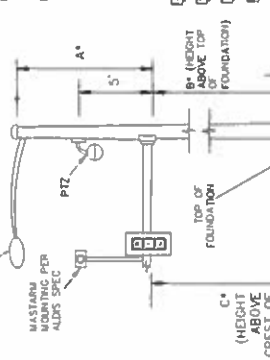
Kimley
 Horn
 120210010

1	DATE	12-23-2010
2	BY	W.M. GIVE
3	REVISIONS	
4	DESCRIPTION	

- 1. CONTRACTOR TO INSTALL PLAN FILED/VIDEO CAMERA ON SIGNAL POLE A PER THE MOUNTING DETAIL SHOWN ON PLAN SHEET C101 AND LOCATE AT THE INTERSECTION OF NORTHGATE LANE AND OBCICI PLACE.
- 2. CONTRACTOR SHALL INSTALL TYPE B CLASS 4 PAVEMENT MARKINGS PER SECTION 602 WHICH COMPATIBLE WITH THE PROVIDED DESIGN AND LANE LINE MARKINGS IN THE PLAN SHEET C101.
- 3. ALL EXISTING TRAFFIC CONTROL EQUIPMENT INCLUDING STOP SIGNS AND OTHER SIGNALS THAT IS NOT USED IN THE APPLICATION OF THE NEW TRAFFIC SIGNALS IS TO BE REMOVED FROM THE INTERSECTION.
- 4. CONTRACTOR SHALL COORDINATE WITH THE CITY ENGINEER FOR THE INSTALLATION OF TRAFFIC OPERATIONAL EQUIPMENT UPON COMPLETION OF NEW SIGNALS. PLEASE CONTACT THE CITY ENGINEER AT (757) 514-7657 FOR COORDINATION OF TIMING AT LEAST 60 DAYS PRIOR TO START.
- 5. THE GROUND ROD FOR THE ELECTRICAL SERVICE SHALL MEET NEC 25 CHWS AND BE C40 WELDED.
- 6. DETAILED CONDUIT RUNS AND CONDUIT SCHEDULE ARE SHOWN ON PLAN SHEET C101.
- 7. CONTRACTOR TO VERIFY THE LOCATION OF ALL UNDERGROUND UTILITIES PRIOR TO HORIZONTAL DIRECTIONAL DRILLING OF CONDUIT.
- 8. CONTRACTOR SHALL INITIAL RECORD DRAWINGS AND SOUS 'C' & 'M' IN ACCORDANCE WITH THE REQUIREMENTS OF THE CITY ENGINEER.
- 9. CONTRACTOR SHALL INITIAL RECORD DRAWINGS AND SOUS 'C' & 'M' IN ACCORDANCE WITH THE REQUIREMENTS OF THE CITY ENGINEER.
- 10. CONTRACTOR SHALL COORDINATE WITH THE CITY ENGINEER FOR THE INSTALLATION OF TRAFFIC OPERATIONAL EQUIPMENT UPON COMPLETION OF NEW SIGNALS. PLEASE CONTACT THE CITY ENGINEER AT (757) 514-7657 FOR COORDINATION OF TIMING AT LEAST 60 DAYS PRIOR TO START.



NOTE 2: MAST ARM MOUNTING PER ALDS SPEC



- INSTALLATION/MOUNTING DETAIL
1. TOP OF FOUNDATION TO BE FLUSH WITH SIDEWALK, IF NO SIDEWALK, TOP OF FOUNDATION SHALL BE 4" ABOVE FINISHED GRADE.
 2. STREET-LEVEL SERIES LED STREET LIGHT SHALL BE INSTALLED WITH PHOTOCELL AND 10' MAST ARM. THE MAST ARM CONSTRUCTOR SHALL COORDINATE WITH THE CITY ENGINEER FOR COLOR TEMPERATURE.
 3. FOR POLES WITHOUT COMBINATION LUMINAIRE ARM, SIGNAL POLE SHALL PROVIDE 1" RISE ABOVE MAST ARM MOUNT HEIGHT AND SHALL BE CAPPED.

PHASE	R/W	P/D	R/W	P/D	R/W	P/D	R/W	P/D	R/W	P/D	R/W	P/D
1	W	12'	W	12'	W	12'	W	12'	W	12'	W	12'
2	W	12'	W	12'	W	12'	W	12'	W	12'	W	12'
3	W	12'	W	12'	W	12'	W	12'	W	12'	W	12'
4	W	12'	W	12'	W	12'	W	12'	W	12'	W	12'
5	W	12'	W	12'	W	12'	W	12'	W	12'	W	12'

- 1. ALL SOUS SHALL BE FABRICATED WITH DIAMOND GRADE SHEETING MATERIAL.
- 2. R10-38 (9" x 12" sign)
- 3. R10-15 (30" x 30" sign)
- 4. R10-11 (36" x 42" sign)
- 5. D3-SERIES 18" x 6"-0" MALK
- 6. D3-SERIES 18" x 6"-0" MALK
- 7. D3-SERIES 18" x 6"-0" MALK
- 8. SIGN A, B AND C SHALL BE ILLUMINATED STREET NAME SIGNS AND SHALL BE DESIGNED & MOUNTED IN ACCORDANCE WITH CITY OF SUFFOLK STANDARDS

EMERGENCY VEHICLE PRE-EMPTION PULSING

REPROCESSED SIGNS

- Main St.
- Northgate Ln.
- Louise Obici Ln.

COLOR SEQUENCE CHART

PHASE	RED	YELLOW	GREEN	WALK	WALK	WALK	WALK	WALK	WALK	WALK	WALK	WALK
1	---	---	---	---	---	---	---	---	---	---	---	---
2	---	---	---	---	---	---	---	---	---	---	---	---
3	---	---	---	---	---	---	---	---	---	---	---	---
4	---	---	---	---	---	---	---	---	---	---	---	---
5	---	---	---	---	---	---	---	---	---	---	---	---
6	---	---	---	---	---	---	---	---	---	---	---	---
7	---	---	---	---	---	---	---	---	---	---	---	---
8	---	---	---	---	---	---	---	---	---	---	---	---
9	---	---	---	---	---	---	---	---	---	---	---	---
10	---	---	---	---	---	---	---	---	---	---	---	---

POLE SCHEDULE

POLE TYPE	POLE HEIGHT	MAST ARM LENGTH	SIGNAL HEAD MOUNTING HEIGHT	ASSOCIATED SIGNAL PHASE	SOUS MOUNTING DISTANCE FROM POLE	SOUS MOUNTING HEIGHT	VEHICLE DETECTION MOUNTING HEIGHT	VEHICLE DETECTION MOUNTING DISTANCE FROM POLE
1	18'	18'	12'	12'	12'	12'	12'	12'
2	18'	18'	12'	12'	12'	12'	12'	12'
3	18'	18'	12'	12'	12'	12'	12'	12'
4	18'	18'	12'	12'	12'	12'	12'	12'
5	18'	18'	12'	12'	12'	12'	12'	12'

LEGEND

- TRAFFIC SIGNAL HEAD 8" MALK PHASE MOUNTING
- PROPOSED P10 MOUNTED TRAFFIC SIGNAL CONTROLLER CABINET
- PROPOSED TRAFFIC SIGNAL JUNCTION BOX (NOT FOR 18" x 6"-0" MALK UNLESS OTHERWISE NOTED)
- PROPOSED SIGNAL POLE WITH MAST ARM
- PROPOSED P10 MOUNTED TRAFFIC SIGNAL HEAD (NOT FOR 18" x 6"-0" MALK UNLESS OTHERWISE NOTED)
- PROPOSED 2-1/2" ELECTRICAL SERVICE AND 2-1/2" PHASE DETAIL SIGN
- TRAFFIC SIGNAL HEAD 8" MALK PHASE MOUNTING
- PROPOSED P10 MOUNTED TRAFFIC SIGNAL CONTROLLER CABINET
- PROPOSED TRAFFIC SIGNAL JUNCTION BOX (NOT FOR 18" x 6"-0" MALK UNLESS OTHERWISE NOTED)
- PROPOSED SIGNAL POLE WITH MAST ARM
- PROPOSED P10 MOUNTED TRAFFIC SIGNAL HEAD (NOT FOR 18" x 6"-0" MALK UNLESS OTHERWISE NOTED)
- PROPOSED 2-1/2" ELECTRICAL SERVICE AND 2-1/2" PHASE DETAIL SIGN

1. -- INDICATES MOUNTING HEIGHT ON SIGNAL POLE. 2. -- INDICATES MOUNTING HEIGHT ON SIGNAL POLE. 3. -- INDICATES MOUNTING DISTANCE FROM POLE. 4. -- INDICATES MOUNTING DISTANCE FROM POLE. 5. -- INDICATES MOUNTING DISTANCE FROM POLE.

GENERAL TRAFFIC SIGNAL NOTES

- ALL TRAFFIC SIGNAL WORK SHALL BE CONSTRUCTED & INSTALLED IN ACCORDANCE WITH THE MASSDOT SPECIFICATIONS FOR TRAFFIC SIGNALS, 809 CMR 2.00, THE MASSDOT TRAFFIC SIGNALS MANUAL DATED 2011, REFERRED TO AS "CITY SPEC'S", VDOT ROAD AND BRIDGE STANDARDS DATED 2008, THE MASSDOT LABORER TRAFFIC CONTROL DEVICES MANUAL DATED 2009, THE VERMONT WORK AREA PROTECTION MANUAL DATED 2011 WITH ANY REVISIONS & THE 2011 NATIONAL ELECTRIC CODE.
- THE CONTRACTOR SHALL CONTACT MASS UTILITY FOR UTILITY LOCATIONS 48 HOURS BEFORE STARTING CONSTRUCTION.
- MAST ARM POLE FOUNDATIONS SHALL BE VDOT STANDARD PF-1. THE CONTRACTOR SHALL BE RESPONSIBLE FOR SECURING SOIL BORINGS & REVIEWING THE ELEVATIONS FOR THE TOP OF THE FOUNDATIONS. A FOUNDATION DESIGN SHALL BE PREPARED & SUBMITTED FOR APPROVAL BY A PROFESSIONAL ENGINEER LICENSED IN VERMONT. THE ELEVATIONS FOR THE FOUNDATIONS SHALL BE WITHIN 9 INCHES OF THE EXISTING CONDITIONS DO NOT ALLOW FOR THE USE OF A VDOT STANDARD PF-1 FOUNDATION. NOTIFY THE CITY TRAFFIC ENGINEER'S REPRESENTATIVE.
- THE CONTRACTOR SHALL STAKE SIGNAL POLE LOCATIONS AND VERIFY MAST ARM LENGTHS WITH THE CITY TRAFFIC ENGINEER'S REPRESENTATIVE PRIOR TO DRILLING FOUNDATIONS. CONTACT ROBERT LEWIS AT (757) 514-7603 FOR VERIFICATION.
- SIGNAL MOUNTING SHALL CONFORM TO STANDARD SW-3. SEE CITY WEBSITE FOR SPECS.
- ALL JUNCTION BOXES SHALL BE STANDARD JB-S1, S2, OR S3 UNLESS OTHERWISE NOTED.
- CONDUIT SHALL BE INSTALLED IN ACCORDANCE WITH STANDARD EG-1 AT A MINIMUM DEPTH OF 18" BELOW FINISH GRADE.
- THE CONTROLLER SHALL BE A PREEM TRAFFIC UNIT ATC-1000.
- THE CONTROLLER CABINET SHALL BE NO LESS THAN 54" HIGH, 44" WIDE & 24" DEEP AND SHALL BE LARGE ENOUGH TO PROVIDE FOR CASE OF MAINTENANCE FOR THE CONTROLLER CABINET. FOUNDATIONS SHALL BE VDOT PF-1.
- THE CONTRACTOR SHALL ADVISE FOR ELECTRICAL SERVICE FOR THE SIGNAL AND FOR NATURAL GAS. SPECS SYSTEM UTILITIES REQUIRED TO PROVIDE THESE SERVICES SHALL BE BILLED DIRECTLY BY THE UTILITY COMPANY TO THE DEVELOPER/CONTRACTOR. THE CITY TRAFFIC ENGINEER WILL FURNISH THE CONTRACTOR WITH BILLING ACCOUNT INFORMATION FOR UTILITY COMPANIES.
- ALL TRAFFIC SIGNAL WIRE SHALL BE NUMBERED 14 AWG, UNLESS OTHERWISE SPECIFIED. A CONTINUOUS WIRE (NO SPLICED) SHALL BE RUN BETWEEN THE CONTROLLER CABINET & THE SIGNAL HEAD.
- FORESTRAIN WEDGES SHALL BE:
 - DAUGHTER COUNTERDOWN FORESTRAIN SIGNAL #430-6479-2011
 - PRELCO UPPER & LOWER ARM ASSEMBLY SE 3148-P34
 - PREEM TRAFFIC MAINTENANCE HOUSING 4302A-02-01-01.
- SIGNAL HEADS SHALL BE LED. ALL SIGNAL HEADS SHALL HAVE FULL TANKED WISORS FOR EACH INDIVIDUAL 12" SECTIONS. ALL TRAFFIC SIGNAL HEADS SHALL HAVE BACK PLATES. ALL ITEMS SHALL BE IN ACCORDANCE WITH CITY SPECIFICATIONS.
- INTERCONNECTION SHALL BE PROVIDED BY FIBER OPTIC CABLE. FIBER OPTIC INTERCONNECTION SHALL BE PROVIDED WITH TRAFFIC SIGNALS ON MAIN STREET AND CONNECTED TO CITY NETWORK LOCATED AT THE CITY'S TRAFFIC OPERATIONS CENTER. ROUTING OF CABLE SHALL BE APPROVED BY CITY TRAFFIC ENGINEER. ALL EQUIPMENT/METHODS TO BE UTILIZED SHALL BE APPROVED BY CITY TRAFFIC ENGINEER. **TRAFFIC ENGINEER'S WEBSITE FOR APPROVED EQUIPMENT LIST IS AVAILABLE FROM CITY WEBSITE.**
- EMERGENCY PRE-EMPTION SHALL BE INSTALLED USING THE CITY OPTICOM PRIORITY CONTROL SYSTEM. TO INCLUDE MODEL 764 MULTIMODE PHASE SELECTOR AND ASSOCIATED OPTICAL DETECTOR EQUIPMENT.
- POLE FOUNDATIONS, POLES, AND MAST ARMS SHALL BE DESIGNED TO ACCOMMODATE THE LOADS SHOWN ON PLANS.
- THE VIDEO DETECTION SYSTEM SHALL BE PRE-APPROVED BY THE CITY OF SUFFOLK. CONSULT CITY TRAFFIC ENGINEER FOR PREFERRED DESIGN. SEE CITY WEBSITE FOR EQUIPMENT SPECIFICATIONS.
- LENGTH OF DETECTION BOLES & OPTICAL DETECTORS ARE TO BE LOCATED BY THE CONTRACTOR AND FIELD REVIEWED BY THE CITY TRAFFIC ENGINEER'S REPRESENTATIVE PRIOR TO INSTALLATION.
- THE CONTRACTOR SHALL SUBMIT SHOP DRAWINGS AND/OR CATALOG CUTS FOR THE MAST ARM POLE, FOUNDATION DESIGN, CONTROLLER, CONTROLLER CABINET & SIGNAL HEADS WITH JARVIS. TO THE DEVELOPER/TRAFFIC ENGINEER. APPROVED COPIES SHALL BE SUPPLIED TO THE CITY TRAFFIC ENGINEER'S REPRESENTATIVE.
- NO WORK SHALL COMMENCE WITH THE EXCEPTION OF THE SOIL SURVEY FOR THE FOUNDATIONS UNTIL ALL SUBMITTALS REQUIRED ARE RECEIVED AND REVIEWED BY THE CITY TRAFFIC ENGINEER'S REPRESENTATIVE.
- ALL MEASUREMENTS FOR THE PLACEMENT OF SIGNAL HEADS, SIGNALS, AND CAMERAS ON MAST ARMS SHALL BE TAKEN FROM THE FLANGE TO THE CENTER OF THE SIGNAL HEAD & SIGNAL.
- THE CONTRACTOR SHALL BE RESPONSIBLE FOR THE OPERATION OF THE SIGNAL AND ITS COMPONENTS FROM THE TIME THE WORK COMMENCES UNTIL SUCH TIME AS THE 30-DAY TEST PERIOD HAS BEEN COMPLETED AND THE SIGNAL HAS BEEN ACCEPTED BY THE CITY. THE CONTRACTOR SHALL RESPOND TO EMERGENCY REPAIR NOTIFICATIONS WITHIN TWO (2) HOURS.
- THE 30-DAY TEST PERIOD SHALL BEGIN ONLY AFTER ITEMS SHOWN ON THE CITY PUNCH LIST HAVE BEEN COMPLETED. SEE CITY WEBSITE FOR PUNCH LIST REQUIREMENTS.
- CONDUITS SHALL BE INSTALLED SO THAT MOISTURE WILL DRAIN AS PER SPECIFICATIONS SECTION 700 04 (b).

TRAFFIC SIGNAL INSPECTION REQUIREMENTS

- PRIOR TO ANY WORK BEGINNING, A PRECONSTRUCTION MEETING IS REQUIRED WITH TRAFFIC ENGINEERING. CALL (757) 514-7603 TO SCHEDULE.
- A TRAFFIC CONTROL PLAN MUST BE SUBMITTED AND APPROVED BY TRAFFIC ENGINEERING PRIOR TO APPLICATION FOR LAND USE PERMIT.
- A LAND USE PERMIT SHALL BE SECURED BY THE CONTRACTOR FOR ALL WORK.
- A SUPERVISOR CERTIFIED BY MSA (INTERNATIONAL METROPOLITAN SIGNAL ASSOCIATION) SHALL BE ON SITE ANY TIME WORK IS BEING COMPLETED ON A TRAFFIC SIGNAL. 24 HOUR 7 DAY A WEEK CONTACT INFORMATION FOR CONTRACTOR STAFF SHALL BE PROVIDED TO TRAFFIC ENGINEERING PRIOR TO LAND USE PERMIT APPROVAL.
- AFTER NOTE 33 ABOVE IS COMPLETED, A 48 HOUR NOTIFICATION WILL BE REQUIRED AT (757) 514-7603 TO SCHEDULE INSPECTION OF THE FOLLOWING ITEMS PRIOR TO WORK COMMENCING:
 - ALL EQUIPMENT LOCATION STATE OUT
 - ALL FOUNDATIONS PRIOR TO CONCRETE POUR INCLUDING POLES, CABINETS & AUXILIARY EQUIPMENT
 - ALL CONDUIT CONNECTION PRIOR TO BACKFILLING INCLUDING JUNCTION BOX CONNECTION
 - ALL CONDUIT RUNS MUST BE REQUIRED TO HAVE A CONDUIT MANIPULATOR PULLED THROUGH THEM PRIOR TO WIRE INSTALLATION
 - A TRAFFIC ENGINEERING REPRESENTATIVE MUST BE PRESENT PRIOR TO TURN ON OF ANY NEW EQUIPMENT/INSTALLATION
 - TRAFFIC ENGINEERING WILL COMPLETE AN EXTENSIVE REVIEW OF ALL ASPECTS OF SIGNAL, SIGN AND PAVEMENT MARKING WORK AND ANY PUNCH LIST ITEMS CORRECTED PRIOR TO ACCEPTANCE BY THE CITY.
 - CONTRACTORS MUST SECURE ALL REQUIRED PERMITS FOR ELECTRICAL/GAS WORK FROM THE CITY DEPARTMENT OF PLANNING & COMMUNITY DEVELOPMENT SERVICES PRIOR TO BEGINNING THIS WORK.

TRAFFIC SIGNAL NOTES

OBICI PLACE MAIN STREET
PREPARED FOR
CITY OF SUFFOLK ECONOMIC DEVELOPMENT AUTHORITY

CT501

Kimley-Horn



PROJECT NO. 1170190-6
DATE 12/10/2015
DRAWN BY: J.S.H.

NO.	REVISIONS
1	1.17Z CARRIER MOVED TO POST A 07/17/16
2	
3	
4	
5	
6	
7	
8	
9	
10	
11	
12	
13	
14	
15	
16	
17	
18	
19	
20	
21	
22	
23	
24	
25	
26	
27	
28	
29	
30	
31	
32	
33	
34	
35	
36	
37	
38	
39	
40	
41	
42	
43	
44	
45	
46	
47	
48	
49	
50	

2025 TRADE SHOW AND ASSOCIATES, INC.
1505 WALKER STREET, SUITE 200, WASHINGTON, VA 22184
PHONE: 757-273-8600 FAX: 757-273-8601
WWW.KIMLEY-HORN.COM

**BID FORM
(Addendum No. 2)**

TO: Purchasing Division
442 W. Washington Street
Room 1086
Suffolk, VA 23434

BID: OBICI PLACE MAIN STREET
IMPROVEMENTS

IFB # 16037-JS

DUE: February 26, 2016

TIME: 3:00 PM, Local

_____ (Company) quotes firm price(s) below; to furnish all labor, materials, equipment, transportation, licenses, permits, and fees required to provide the **OBICI PLACE MAIN STREET IMPROVEMENTS** to the limits shown on the drawings in accordance with all specifications, terms, conditions, and drawings herein for the sum of _____ dollars. Which shall be hereafter referred to as the BASE BID. The BASE BID is in accordance with the prices set forth in the Schedule of Prices attached and is based on the quantities shown. The project shall be performed to the full and entire satisfaction of the Owners.

It is the intent of the CITY to award the bid in total. Should total costs exceed that budgeted for the projects, the CITY reserves the right to negotiate price with the lowest responsive and responsible bidder.

Obici Place Main Street Improvements					
<i>Bid Item Number</i>	<i>Item</i>	<i>Quantity</i>	<i>Unit</i>	<i>Unit Cost</i>	<i>Total Cost</i>
General Items					
<i>1</i>	<i>Mobilization</i>	<i>1</i>	<i>LS</i>	<i>\$</i>	<i>\$</i>
<i>2</i>	<i>Construction Surveying</i>	<i>1</i>	<i>LS</i>	<i>\$</i>	<i>\$</i>
<i>3</i>	<i>Clearing & Grubbing</i>	<i>0.5</i>	<i>AC</i>	<i>\$</i>	<i>\$</i>
<i>4</i>	<i>Regular Excavation</i>	<i>550</i>	<i>CY</i>	<i>\$</i>	<i>\$</i>
<i>5</i>	<i>Select Material for Utility Installations</i>	<i>550</i>	<i>CY</i>	<i>\$</i>	<i>\$</i>
Pavement Items					
<i>6</i>	<i>Asphalt Concrete TY. SM-12.5A (variable depth overlay)</i>	<i>1,370</i>	<i>TON</i>	<i>\$</i>	<i>\$</i>
<i>7</i>	<i>Asphalt Concrete TY. SM-12.5A</i>	<i>150</i>	<i>TON</i>	<i>\$</i>	<i>\$</i>
<i>8</i>	<i>Asphalt Concrete TY. IM-19.0A</i>	<i>220</i>	<i>TON</i>	<i>\$</i>	<i>\$</i>
<i>9</i>	<i>Asphalt Concrete TY. BM-25.0</i>	<i>360</i>	<i>TON</i>	<i>\$</i>	<i>\$</i>
<i>10</i>	<i>Aggregate Base Material TY. I No. 21A/B</i>	<i>1,150</i>	<i>TON</i>	<i>\$</i>	<i>\$</i>
<i>11</i>	<i>Geotextile Fabric (Subgrade Stabilization)</i>	<i>1,275</i>	<i>SY</i>	<i>\$</i>	<i>\$</i>
Drainage Items					
<i>12</i>	<i>Reinforced Concrete Pipe, 15"</i>	<i>180</i>	<i>LF</i>	<i>\$</i>	<i>\$</i>

Obici Place Main Street Improvements					
<i>Bid Item Number</i>	<i>Item</i>	<i>Quantity</i>	<i>Unit</i>	<i>Unit Cost</i>	<i>Total Cost</i>
13	Reinforced Concrete Pipe, 18"	284	LF	\$	\$
14	Reinforced Concrete Pipe Class IV, 18"	253	LF	\$	\$
15	Reinforced Concrete Pipe, 24"	413	LF	\$	\$
16	Drop Inlet, DI-1	2	EA	\$	\$
17	Drop Inlet, DI-3A	2	EA	\$	\$
18	Drop Inlet, DI-3B, L=4'	3	EA	\$	\$
19	Drop Inlet, DI-3B, L=6'	2	EA	\$	\$
20	Drop Inlet, DI-3B, L=4' with 72" base	1	EA	\$	\$
21	Drop Inlet, DI-3C, L=8'	1	EA	\$	\$
22	Manhole MH-1	14.9	LF	\$	\$
23	Frame and Cover MH-1	7	EA	\$	\$
Demolition Items					
24	Flexible Pavement Planing	10,000	SY	\$	\$
25	Saw Cut Pavement	4,500	LF	\$	\$
26	Demolition of Pavement (Asphalt)	1,490	SY	\$	\$
27	Remove Existing Drainage Structure	8	EA	\$	\$
28	Modify Existing Drainage Structure	3	EA	\$	\$
29	Relocate Existing Sign	1	EA	\$	\$
30	Remove Existing Sign	1	EA	\$	\$
31	Remove Existing Drainage Pipe 10"-24"	1,279	LF	\$	\$
32	Remove Existing Sidewalk	540	SY	\$	\$
33	Remove Existing Curb / Curb and Gutter	1,800	LF	\$	\$
34	Eradicate Existing Pavement Marking	560	LF	\$	\$
35	Temporary Pedestrian Path	370	SY	\$	\$
36	Temporary Orange Safety Fence 4'	2,700	LF	\$	\$
Incidental Roadway Items					
37	Curb CG-2	900	LF	\$	\$
38	Combination Curb and Gutter CG-6	1,700	LF	\$	\$
39	CG-12 Detectable Warning Surface	5	SY	\$	\$
40	Class A-3 Concrete Ramp (7" Depth)	10	CY	\$	\$
41	Median Strip, MS-1A	220	SY	\$	\$
42	Cement Conc. Sidewalks (4" Depth)	680	SY	\$	\$
43	Stamped Colored Concrete Crosswalk (7" Thickness)	230	SY	\$	\$
44	Adjust Existing Fire Hydrant	1	EA	\$	\$
Pavement Markings/Signing					
45	Pavement Line Markings, Type B Class I (4")	6,000	LF	\$	\$

Obici Place Main Street Improvements					
Bid Item Number	Item	Quantity	Unit	Unit Cost	Total Cost
46	<i>Pavement Line Markings, Type B Class I (6")</i>	400	LF	\$	\$
47	<i>Pavement Line Markings, Type B Class I (24")</i>	150	LF	\$	\$
48	<i>Pavement Message Mark: Single Elongated Arrow</i>	16	EA	\$	\$
49	<i>Sign Panel</i>	22	SF	\$	\$
50	<i>Sign Post STP -1, 2 1/2"</i>	48	LF	\$	\$
51	<i>Concrete Foundation, STP-1</i>	4	EA	\$	\$
52	<i>Snow Plowable Raised Pavement Marker</i>	80	EA	\$	\$
Erosion & Sediment Control					
53	<i>Inlet Protection (Type B)</i>	19	EA	\$	\$
54	<i>Temporary Silt Fence</i>	2,700	LF	\$	\$
55	<i>4" Class A Topsoil</i>	0.5	AC	\$	\$
56	<i>Regular Seed</i>	100	LB	\$	\$
57	<i>Temporary Seed</i>	50	LB	\$	\$
58	<i>Fertilizer (10-20-10)</i>	0.13	TON	\$	\$
59	<i>Lime</i>	1.00	TON	\$	\$
Maintenance of Traffic					
60	<i>Allaying Dust</i>	90	HR	\$	\$
61	<i>Construction Signs</i>	320	SF	\$	\$
62	<i>Truck Mounted Attenuator</i>	160	HR	\$	\$
63	<i>Group 2 Channelizing Device</i>	9,000	EA/ DAY	\$	\$
64	<i>Electronic Arrow</i>	1,200	HR	\$	\$
Traffic Signals					
65	<i>Signal Pole MP-1 (30' Vertical, Twin 45'/65' Mast Arms, 14' Luminaire Arm)</i>	1	EA	\$	\$
66	<i>Signal Pole MP-1 (21' Vertical, 40' Mast Arm)</i>	1	EA	\$	\$
67	<i>Signal Pole MP-1 (30' Vertical, 45' Mast Arm, 14' Luminaire Arm)</i>	1	EA	\$	\$
68	<i>Concrete Foundation (CF-1)</i>	4	CY	\$	\$
69	<i>Signal Pole Foundation (PF-1)</i>	66	CY	\$	\$
70	<i>Pedestal Pole (PF-2 10')</i>	1	EA	\$	\$
71	<i>Pedestrian Actuation (PA-3)</i>	1	EA	\$	\$
72	<i>Pedestrian Push Button</i>	4	EA	\$	\$
73	<i>City Standard Traffic Signal Cabinet</i>	1	EA	\$	\$
74	<i>City Standard Traffic Signal Controller</i>	1	EA	\$	\$
75	<i>Traffic Signal Head Sec 12" LED</i>	39	EA	\$	\$

Obici Place Main Street Improvements					
Bid Item Number	Item	Quantity	Unit	Unit Cost	Total Cost
76	<i>Hanger Assm. SMB-3 One-Way</i>	12	EA	\$	\$
77	<i>Pan/Tilt/Zoom Camera and Equipment</i>	1	EA	\$	\$
78	<i>Streetsense Series LED Street Light</i>	2	EA	\$	\$
79	<i>Aldis Gridsmart Camera (Vehicle Detection)</i>	1	EA	\$	\$
80	<i>Trench Excavation ECI-1</i>	600	LF	\$	\$
81	<i>1 1/4" GRS Conduit</i>	15	LF	\$	\$
82	<i>2" PVC Conduit</i>	100	LF	\$	\$
83	<i>3" PVC Conduit</i>	200	LF	\$	\$
84	<i>4" PVC Conduit</i>	100	LF	\$	\$
85	<i>4" Bored HDPE Conduit</i>	650	LF	\$	\$
86	<i>Conductor Cable (1C/6 AWG)</i>	550	LF	\$	\$
87	<i>Conductor Cable (3C/10 AWG)</i>	300	LF	\$	\$
88	<i>Conductor Cable (3C/12 AWG)</i>	600	LF	\$	\$
89	<i>Conductor Cable (2C/14 AWG)</i>	600	LF	\$	\$
90	<i>Conductor Cable (5C/14 AWG)</i>	1,350	LF	\$	\$
91	<i>Conductor Cable (7C/14 AWG)</i>	800	LF	\$	\$
92	<i>Single Mode Fiber Optic Cable (12-Count)</i>	200	LF	\$	\$
93	<i>Video Detection Cable</i>	400	LF	\$	\$
94	<i>Aldis Gridsmart Camera Detection Cable</i>	150	LF	\$	\$
95	<i>EVP Detector Cable</i>	680	LF	\$	\$
96	<i>Pan/Tilt/Zoom Cable</i>	300	LF	\$	\$
97	<i>Pull Wire</i>	2,500	LF	\$	\$
98	<i>Emergency Preemption Equipment</i>	1	EA	\$	\$
99	<i>Electrical Service (SE-5)</i>	1	EA	\$	\$
100	<i>Electrical Service Grounding Electrode (10')</i>	1	EA	\$	\$
101	<i>Junction Box (JB-S3)</i>	4	EA	\$	\$
102	<i>Junction Box (JB-S1)</i>	1	EA	\$	\$
103	<i>Internally Illuminated Street Name Sign (One-Sided Panel)</i>	4	EA	\$	\$
104	<i>Sign Panel</i>	40	SF	\$	\$
105	<i>Fiber Splice and Fiber Optic Communications Equipment</i>	1	EA	\$	\$
106	<i>Natural Gas Backup Generator</i>	1	EA	\$	\$
107	<i>Natural Gas Service Tap Fee</i>	1	EA	\$	\$
Landscape					
108	<i>Crème Bruleetickseed</i>	43	EA	\$	\$
109	<i>Happy Returns Daylily</i>	257	EA	\$	\$
110	<i>Regal Prince Oak</i>	5	EA	\$	\$

Obici Place Main Street Improvements					
Bid Item Number	Item	Quantity	Unit	Unit Cost	Total Cost
111	<i>Big Blue Lilyturf</i>	1,103	EA	\$	\$
112	<i>Silvery Sunproof Blue Lilyturf</i>	285	EA	\$	\$
113	<i>Oriental Fountain Grass</i>	14	EA	\$	\$
114	<i>Lacey Blue Russian Sage</i>	43	EA	\$	\$
115	<i>Coneflower</i>	304	EA	\$	\$
116	<i>Sod</i>	8,281	SF	\$	\$
117	<i>Mulch</i>	120	CY	\$	\$
TOTAL BID AMOUNT (BID ITEM Nos. 1 through 117, inclusive)				\$	

Determination of low bidder shall be based on the BASE BID.

REFERENCES

Indicate below a listing of at least three (3) recent references for which you have provided similar services. Include the date that services were furnished and the name, address, and phone number of the person we have your permission to contact.

	<u>Client/Address</u>	<u>Date</u>	<u>Contact Person</u>	<u>Phone No.</u>
1)	_____	_____	_____	_____
	_____	_____	_____	_____
	_____	_____	_____	_____
2)	_____	_____	_____	_____
	_____	_____	_____	_____
	_____	_____	_____	_____
3)	_____	_____	_____	_____
	_____	_____	_____	_____
	_____	_____	_____	_____

Bidder has included the following with his BID FORM (please check √):

- "Anti-collusion/Nondiscrimination/Drug Free Workplace" clause
- Proof of Authority to Transact Business in Virginia form

Company Name: _____

Address: _____

City / State / Zip: _____

Person Quoting: _____ Title: _____

Telephone: _____ FAX No.: _____

E-mail: _____ Mobile No.: _____

Social Security Number or FIN Number: _____

I certify that this bid is made without prior understanding, agreement, or connection with any corporation, firm, or person submitting a bid for the same equipment/materials/ service and is in all respects fair and without collusion or fraud. I understand that collusive bidding is a violation of State and Federal law and can result in fines, prison sentences and civil damage awards. I agree to abide by all conditions of this bid and certify that I am authorized to sign this bid for the bidder.

Bidder agrees to begin the Work within ten (10) days of Notice to Proceed; If said work is not completed within 180 calendar days as stated in the Notice to Proceed, the Contractor shall be liable and hereby agrees to pay to the Owner as liquidated damages, and not as a penalty, the amount in accordance with **VDOT Road and Bridge Specifications Table I1, Section 108.06** per calendar day for each and every part of a day thereafter that said work remains incomplete.

Bidder has examined copies of all the Bid Documents including the following Addenda:

<u>Date</u>	<u>Number</u>
_____	_____
_____	_____
_____	_____
_____	_____

I certify by my signature below that I have received the documents associated with this bid and understand that the review for completeness of these bid documents and the understanding and comprehension of the bid specifications is solely my responsibility; based on this, by my signature below I waive all rights to further claims against the CITY that the document were incomplete or not understandable.

I certify that the bidder represented herein is eligible to bid with respect to all applicable sections of State and Local Government Conflict of Interest Act, Code of Virginia, Section 2.1-639.1 et. seq.

Signature: _____

Date: _____

(Person signing bid should show title or authority to bind the firm in a contract.)

MINIMUM, WHERE APPLICABLE:

- (A) SIZE AND HORIZONTAL AND VERTICAL LOCATION OF ANY EXISTING UTILITIES UNCOVERED DURING THE COURSE OF THE WORK. THIS SHALL INCLUDE TELEPHONE CABLE AND CONDUITS, TV CABLES, ELECTRICAL CABLES AND CONDUITS, GAS LINES, WATER LINES, SEWER FORCE MAINS, SANITARY SEWERS, STORM SEWERS, AND THE LIKE.
- (B) SIZE AND HORIZONTAL AND VERTICAL LOCATION OF ALL HANDBOXES AND FOUNDATIONS INSTALLED.
- (C) SIZE, TYPE, AND HORIZONTAL AND VERTICAL LOCATION OF ALL CONDUITS INSTALLED.
- (D) SIZE, TYPE, AND HORIZONTAL AND VERTICAL LOCATION OF ALL OVERHEAD CABLES INSTALLED.
- (E) LOCATION OF ALL CABLE SPLICES.
- (F) SIZES AND TYPES OF MATERIALS USED AND CHANGES IN SIZES AND TYPES OF MATERIALS.
- (G) LOCATION OF ANY OTHER ITEMS INSTALLED AS REQUESTED BY ENGINEER.

THESE RECORDS ARE A SPECIFIC CONTRACT REQUIREMENT OF THE CONTRACTOR. FINAL PAYMENT WILL NOT BE ISSUED UNTIL SAID DOCUMENTS HAVE BEEN SUBMITTED IN AN ACCEPTABLE FORM.

37. **PARTIAL PAYMENTS:**

- (A) PARTIAL PAYMENTS WILL BE MADE EACH MONTH FOR THE QUANTITY OF WORK PERFORMED IN THE PRECEDING MONTH LESS FIVE PERCENT (5%) TO BE RETAINED UNTIL FINAL COMPLETION OF THE WORK.

REQUESTS FOR PAYMENTS SHALL BE SUBMITTED TO THE OWNER BY THE 10TH OF THE MONTH FOR PAYMENT BY MONTH END. REQUESTS FOR PAYMENTS SHALL BE SUBMITTED IN A FORMAT ACCEPTABLE TO THE DEPARTMENT OF PUBLIC WORKS AND SHALL INCLUDE:

- 1. CONTRACTOR'S ESTIMATE AND INVOICE TRANSMITTALSHEET
- 2. STANDARD CONTRACTOR'S ESTIMATE VOUCHER.

38. **METHOD OF MEASUREMENT:** EXCEPT WHEN STIPULATED OTHERWISE, ALL QUANTITIES OF WORK PERFORMED AND TO BE PAID FOR UNDER THIS CONTRACT SHALL BE CONSTRUED AS THOSE MEASURED IN PLACE BY THE OWNER.

39. **INCREASED OR DECREASED QUANTITIES AND METHOD OF PAYMENT - UNIT PRICES:** THE OWNER RESERVES THE RIGHT TO INCREASE OR DECREASE THE ESTIMATED VALUE OF THE CONTRACT IN AN AMOUNT NOT TO EXCEED TWENTY-FIVE PERCENT (25%). SUCH INCREASE OR DECREASE MAY BE BROUGHT ABOUT EITHER BY VARYING QUANTITIES WITHIN THE ORIGINAL UNITS OF THE

List of Drawings (Addendum No. 2)

Sheet No.	Title	Date
CA001	COVER SHEET	12/10/2015
CA002	GENERAL NOTE	1/13/2016
CA003	LEGEND	12/10/2015
CA004	TYPICAL SECTIONS	12/10/2015
CA005	TYPICAL SECTIONS	12/10/2015
CA006	OVERALL SITE PLAN, SHEET INDEX AND SOIL SURVEY	12/10/2015
SV-1	EXISTING CONDITIONS TOPOGRAPHIC SURVEY	9/23/2015
SV-2	EXISTING CONDITIONS TOPOGRAPHIC SURVEY	9/23/2015
SV-3	EXISTING CONDITIONS TOPOGRAPHIC SURVEY	9/23/2015
SV-4	EXISTING CONDITIONS TOPOGRAPHIC SURVEY	9/23/2015
CE501	EROSION AND SEDIMENT CONTROL NOTES	12/10/2015
CE502	NARRATIVE	12/10/2015
CE503	EROSION AND SEDIMENT CONTROL DETAILS	12/10/2015
CD101	DEMOLITION PLAN	12/10/2015
CD102	DEMOLITION PLAN	12/10/2015
CD103	DEMOLITION PLAN	1/13/2016
CS101	LAYOUT PLAN	12/10/2015
CS102	LAYOUT PLAN	1/13/2016
CS103	LAYOUT PLAN	12/10/2015
CS501	SITE DETAILS	12/10/2015
CS502	PAVEMENT MARKINGS AND SIGNAGE DETAILS	12/10/2015
CS503	TRAFFIC MAINTENANCE DETAILS	12/10/2015
CS504	TRAFFIC MAINTENANCE DETAILS	12/10/2015
CG101	GRADING, DRAINAGE, AND E&S PLAN	1/13/2016
CG102	GRADING, DRAINAGE, AND E&S PLAN	1/13/2016
CG103	GRADING, DRAINAGE, AND E&S PLAN	1/13/2016
CG501	DRAINAGE DETAILS	12/10/2015
CT101	SIGNAL PLAN AT NORTHGATE LANE	2/18/2016
CT102	TRAFFIC SIGNAL DESIGN - CONDUCT DETAIL	12/23/2015
CT501	TRAFFIC SIGNAL NOTES	2/18/2016
CL101	PHOTOMETRIC ANALYSIS	12/23/2015
CL102	PHOTOMETRIC ANALYSIS	12/23/2015
CL103	PHOTOMETRIC ANALYSIS	12/23/2015
CP101	PLANTING PLAN	12/10/2015
CP102	PLANTING PLAN	12/10/2015
CP103	PLANTING PLAN	12/10/2015
CP501	PLANTING DETAILS	12/10/2015
CP502	PLANTING SPECIFICATIONS	12/10/2015