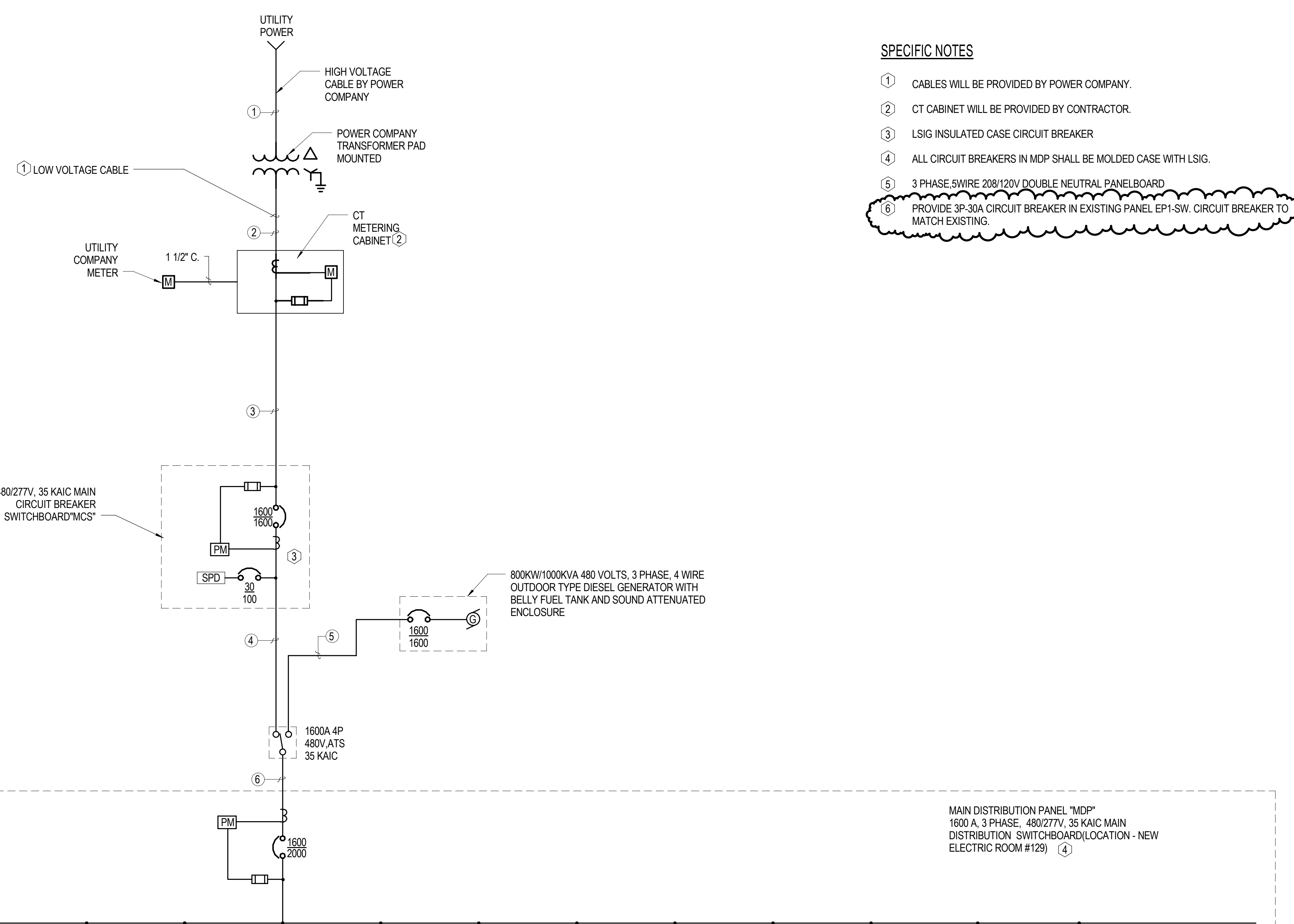
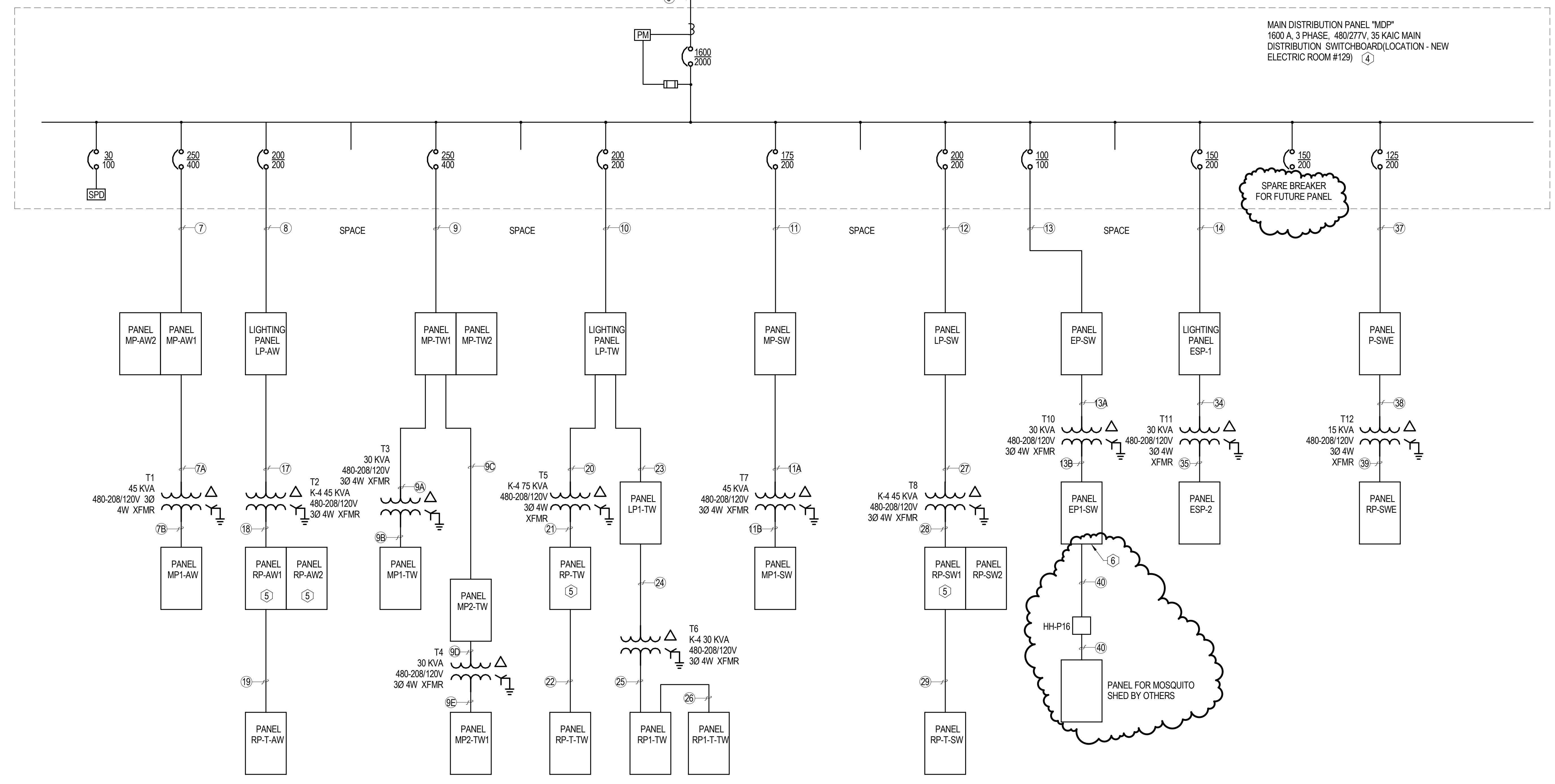


| FEEDER SCHEDULE | | | |
|-----------------|-----------------|---------------------|--|
| FEEDER# | FROM | TO | CONDUIT & WIRE |
| 1 | UTILITY PRIMARY | UTILITY XFMR | 4 WAY 6" UNDERGROUND DUCTBANK |
| 2 | UTILITY XFMR | CT CABINET | 6 WAY 4" UNDERGROUND DUCTBANK |
| 3 | CT CABINET | MCS | 4 SETS 4 #600KCMIL 1 #4/0 GND IN 4" C. |
| 4 | MCS | A.T.S | 4 SETS 4 #600KCMIL 1 #4/0 GND IN 4" C. |
| 5 | GENERATOR BRK#1 | ATS | 4 SETS 4 #600KCMIL 1 #4/0 GND IN 4" C. |
| 6 | A.T.S | MDP | 4 SETS 4 #600KCMIL 1 #4/0 GND IN 4" C. |
| 7 | MDP | MP-AW1&2 | 4 #350KCMIL 1 #4 GND IN 3" C. |
| 7A | MP-AW1 | T1 | 3 #4 1 #8 GND IN 1 1/4" C. |
| 7B | T1 | MP1-AW | 3 #1/0 1 #6 GND IN 2" C. |
| 8 | MDP | LP-AW | 4 #4/0 1 #6 GND IN 2 1/2" C. |
| 9 | MDP | MP-TW1&2 | 4 #600KCMIL 1 #2 GND IN 3" C. |
| 9A | MP-TW2 | T3 | 3 #6 1 #10 GND IN 1" C. |
| 9B | T3 | MP1-TW | 4 #1 1 #6 GND IN 2" C. |
| 9C | MP-TW1 | MP-TW2 | 4 #1/0 1 #6 GND IN 2" C. |
| 9D | MP2-TW | T4 | 3 #6 1 #10 GND IN 1" C. |
| 9E | T4 | MP2-TW | 3 #3 1 #8 GND IN 1 1/4" C. |
| 10 | MDP | LP-TW | 4 #4/0 1 #6 GND IN 2 1/2" C. |
| 11 | MDP | MP-SW | 4 #2/0 1 #6 GND IN 2" C. |
| 11A | MP-SW | T7 | 3 #4 1 #8 GND IN 1 1/4" C. |
| 11B | T7 | MP1-SW | 3 #1/0 1 #6 GND IN 2" C. |
| 12 | MDP | LP-SW | 4 #4/0 1 #6 GND IN 2 1/2" C. |
| 13 | MDP | EP-SW | 4 #2 1 #8 IN 2" C. |
| 13A | EP-SW | T10 | 3 #6 1 #10 GND IN 1" C. |
| 13B | T10 | EP1-SW | 3 #3 1 #8 GND IN 1 1/4" C. |
| 14 | MDP | ESP-1 | 4 #2 1 #8 IN 2" C. |
| 17 | LP-AW | T2 | 3 #4 1 #8 GND IN 1 1/4" C. |
| 18 | T2 | RP-AW | 5 #1/0 1 #6 GND IN 2" C. |
| 19 | RP-AW1 | RP-T-AW | 5 #6 1 #10 GND IN 1" C. |
| 20 | LP-TW | T5 | 3 #1 1 #6 GND IN 1 1/2" C. |
| 21 | T5 | RP-TW | 5 #250KCMIL 1 #4 GND IN 3" C. |
| 22 | RP-TW | RP-T-TW | 5 #6 1 #10 GND IN 1" C. |
| 23 | LP-TW | LP1-TW | 4 #3 1 #8 GND IN 1 1/2" C. |
| 24 | LP1-TW | T6 | 3 #6 1 #10 GND IN 1" C. |
| 25 | T6 | RP1-TW | 5 #1 1 #8 GND IN 1 1/2" C. |
| 26 | RP1-TW | RP1-T-TW | 3 #6 1 #10 GND IN 1" C. |
| 27 | LP-SW | T8 | 3 #4 1 #8 GND IN 1 1/4" C. |
| 28 | T8 | RP-SW | 5 #1/0 1 #6 GND IN 2" C. |
| 29 | RP-SW1 | RP-T-SW | 5 #6 1 #10 GND IN 1" C. |
| 34 | ESP-1 | T11 | 3 #6 1 #10 IN 1" C. |
| 35 | T11 | ESP-2 | 4 #1 1 #8 IN 1 2" C. |
| 36 | MDP | P-CW | 4 #1 1 #6 GND IN 2" C. |
| 37 | MDP | P-SWE | 4 #1 1 #6 GND IN 2" C. |
| 38 | P-SWE | 15 KVA | 3 #10 1 #10 IN 3/4" |
| 39 | T-12 | RP-SWE | 4 #6 1 #10 IN 1 1/4" C. |
| 40 | EP1-SW | PANEL MOSQUITO SHED | 4 #6 1 #10 IN 4" C. |



- SPECIFIC NOTES**
- ① CABLES WILL BE PROVIDED BY POWER COMPANY.
 - ② CT CABINET WILL BE PROVIDED BY CONTRACTOR.
 - ③ LSIG INSULATED CASE CIRCUIT BREAKER
 - ④ ALL CIRCUIT BREAKERS IN MDP SHALL BE MOLDED CASE WITH LSIG.
 - ⑤ 3 PHASE, 5 WIRE 208/120V DOUBLE NEUTRAL PANELBOARD
 - ⑥ PROVIDE 3P-30A CIRCUIT BREAKER IN EXISTING PANEL EP1-SW. CIRCUIT BREAKER TO MATCH EXISTING.



1 SINGLE LINE DIAGRAM
E501 SCALE: NOT TO SCALE

| REVISIONS | |
|------------------------|----------|
| STREETS WING EXPANSION | 03/15/16 |
| 4 ADDENDUM 4 | 07/21/16 |

CLIENT INFORMATION
CITY OF SUFFOLK

866 CAROLINA ROAD,
SUFFOLK, VIRGINIA

DEPARTMENT OF PUBLIC
WORKS OPERATIONS
COMPLEX

KEY PLAN

GRAPHIC SCALES

SIGNATURE



SINGLE LINE DIAGRAM

Drawing No.
E501

Scale: NOT TO SCALE

Date: 03/15/2016 Sheet 37 of 40

Des: SP Drawn: TPB Check: AP