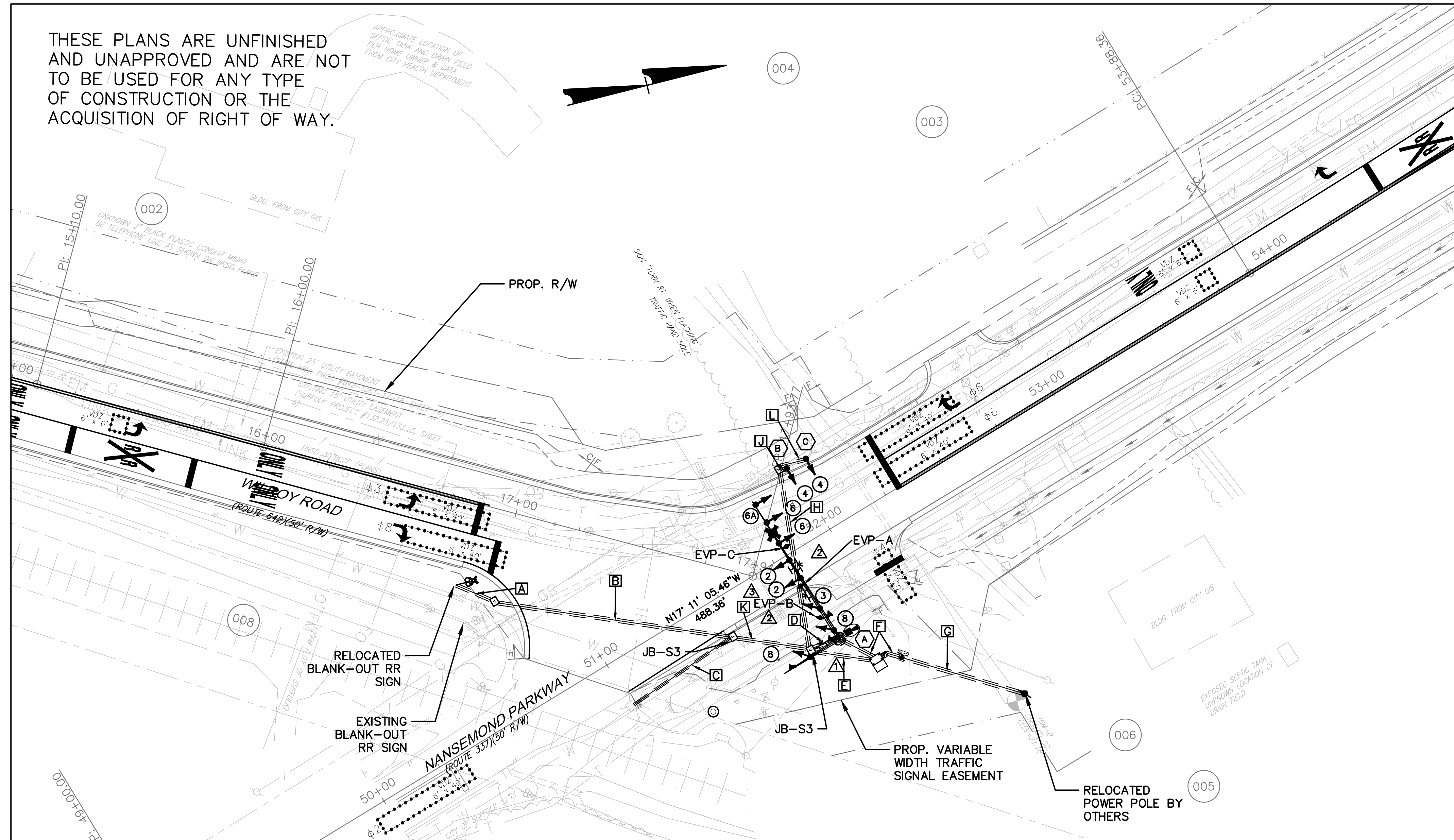


THESE PLANS ARE UNFINISHED AND UNAPPROVED AND ARE NOT TO BE USED FOR ANY TYPE OF CONSTRUCTION OR THE ACQUISITION OF RIGHT OF WAY.

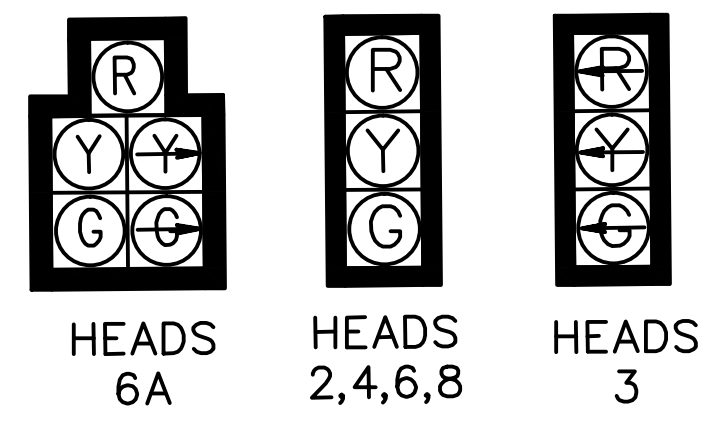


COLOR SEQUENCE CHART

SIGNAL	PHASES					COMBINATIONS		RAILROAD PRE-EMPTION PHASING		F L T H
	2	3	4	6	8	2-6	3-8	CLEARANCE	HOLD	
2	G					G				
3		G					G		G	
4			G							Y
6				G		G		G		
6A					G				G	
8					G		G			
B.O. SIGN								ACT	ACT	

\* A BLANK BOX REPRESENTS A RED INDICATION

SIGNAL HEADS



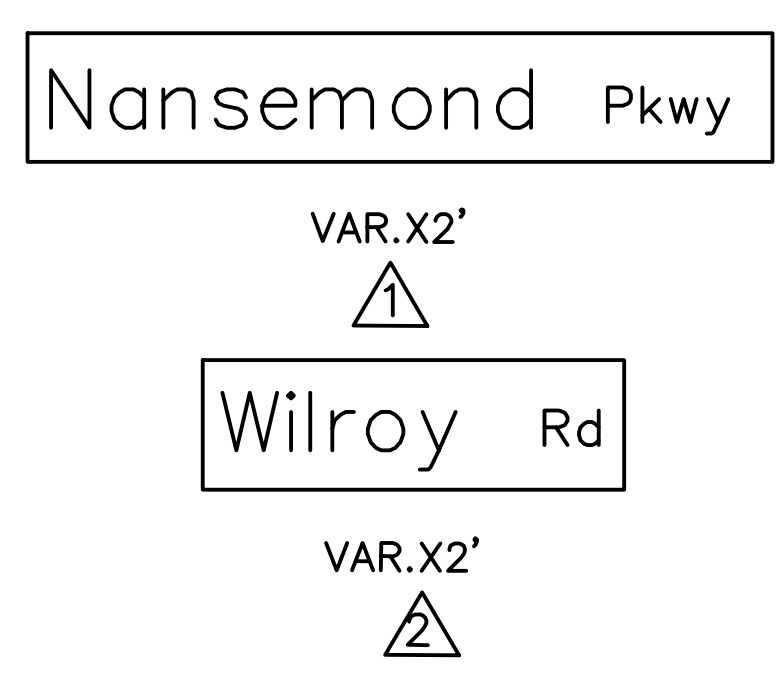
NOTE: IN ACCORDANCE WITH VDOT IIM TE-478, DATED APRIL 22, 2016 ALL SIGNAL BACKPLATES SHALL BE HIGH VISIBILITY SIGNAL BACKPLATES

SIGNAL POLE/SIGNAL HEAD PLACEMENTS

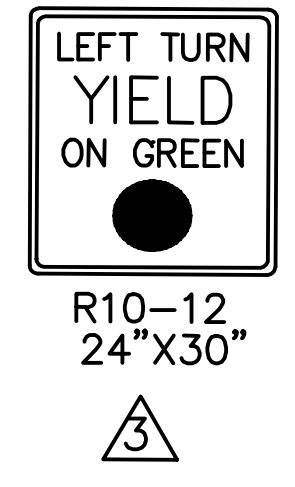
DIMENSIONS ARE MEASURED FROM CENTER OF POLE TO CENTER OF OBJECT

- (A) SIGNAL POLE MP-3  
38' RT. STA.51+81 CONST. @ NANSEMOND  
65' ARM 90° ANGLE TO CONST. @ NANSEMOND  
SIGNAL PLACEMENTS: 4', 14', 28', 36', 43', 52' & 60'  
SIGN PLACEMENTS: 21', 33' & 33'  
CAMERA PLACEMENTS: 9', 39', 46' & 55'  
25' ARM 180° ANGLE TO CONST. @ NANSEMOND  
SIGNAL PLACEMENTS: 15'  
SIGN PLACEMENTS: 7'  
20' LUMINAIRE ARM, H = 35', 90° ANGLE TO CONST. @ NANSEMOND
- (B) PEDESTAL POLE PF-2, 15'  
28.5' LT. STA.51+98 CONST. @ NANSEMOND  
SIGNAL PLACEMENTS: 0'
- (C) PEDESTAL POLE PF-2, 15'  
27.5' LT. STA.52+06 CONST. @ NANSEMOND  
SIGNAL PLACEMENTS: 0'

ILLUMINATED MAST ARM SIGNS

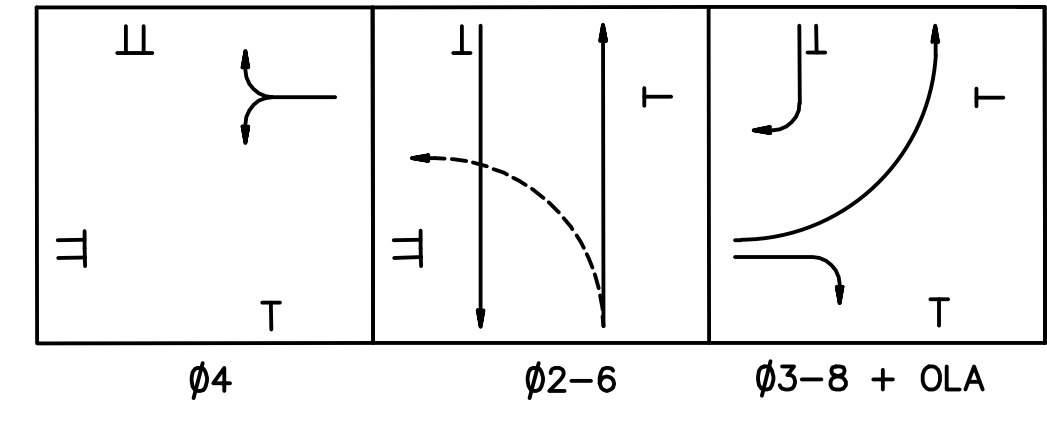


SIGNS

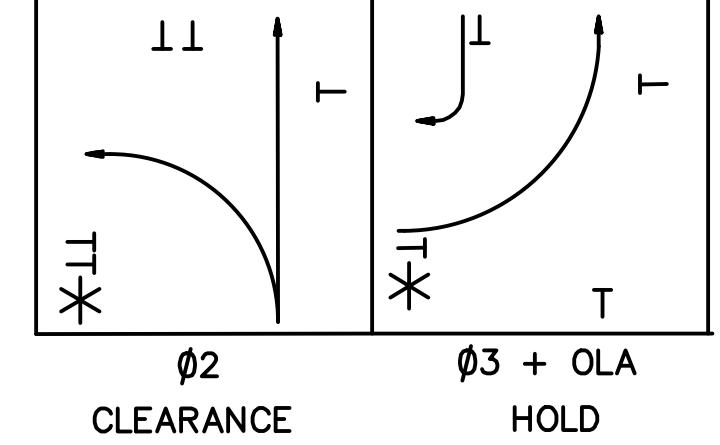


- (A) 1- 2" CONDUIT  
1-4C  
1-2C (S)
- (B) 2- BORED 3" CONDUIT  
1-4C  
1-2C (S)
- (C) 1- 3" CONDUIT  
1-2C (S) (RR PREEMPT)
- (D) 3- 3" CONDUIT  
1-7C  
4-5C  
1- 2C (S)  
1- VIDEO DET. (ADVANCE)  
1- VIDEO DET. (STOP BAR)  
1- PTZ CAMERA  
3- EMER. PREEMPT  
3- ILLUMINATED SIGN
- (E) 3- 3" CONDUIT  
1-7C  
5-5C  
1-4C  
3- 2C (S)  
1- VIDEO DET. (ADVANCE)  
1- VIDEO DET. (STOP BAR)  
1- PTZ CAMERA  
3- EMER. PREEMPT  
3- ILLUMINATED SIGN
- (F) 1- 2" CONDUIT  
2- #8  
1- #8 EGC
- (G) 1- 2" CONDUIT  
EMPTY  
FOR DVP ELECT. SERVICE
- (H) 2- BORED 3" CONDUIT  
1-5C
- (J) 1- 2" CONDUIT  
1-5C
- (K) 2- 3" CONDUIT  
1-4C  
2-2C (S)
- (L) 1- 2" CONDUIT  
1-5C

PHASING DIAGRAM

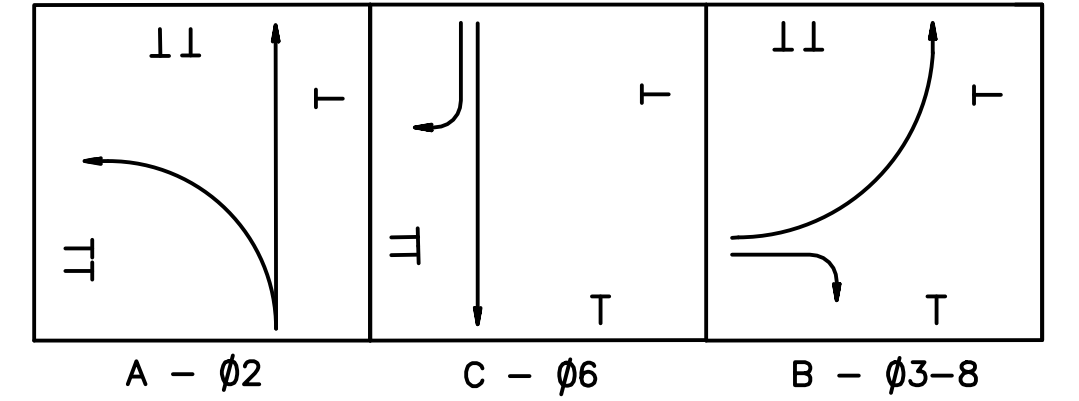


RAILROAD PREEMPTION PHASING DIAGRAM



\* BLANK-OUT SIGN ACTIVATED

EMERGENCY PREEMPTION PHASING DIAGRAM



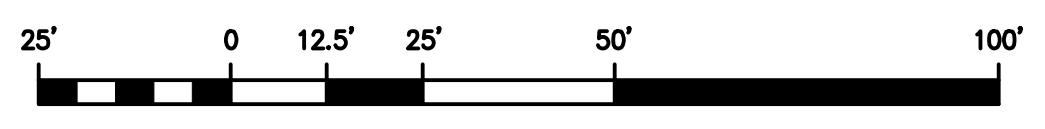
LEGEND

- SIGNAL POLE
- SIGNAL HEAD
- CONTROLLER CABINET AND FOUNDATION WITH UPS
- VIDEO DETECTION CAMERA (ADVANCE)
- VIDEO DETECTION CAMERA (STOP BAR)
- EMERGENCY PREEMPTION
- PTZ CAMERA
- SIGN MOUNTED ON MAST ARM
- SIGN MOUNTED ON SIGNAL POLE
- ILLUMINATED SIGN MOUNTED ON MAST ARM
- JUNCTION BOX (JB-S2 UNLESS NOTED)
- CONDUIT
- SE-5 ELECTRICAL SERVICE

NOTE: CONTRACTOR SHALL OBTAIN ILLUMINATED SIGNS IN ACCORDANCE WITH CITY OF SUFFOLK 2014 PUBLIC FACILITIES MANUAL SECTION 4.2.3.3 AND THE ILLUMINATED STREET NAME SIGN DESIGN AND STANDARDS LOCATED AT [http://www.suffolkva.us/pub\\_wks/traffic/developer-tools/](http://www.suffolkva.us/pub_wks/traffic/developer-tools/)

ALL COSTS ASSOCIATED WITH OBTAINING AND INSTALLING ILLUMINATED SIGNS SHALL BE CONSIDERED INCIDENTAL TO NS TRAFFIC SIGNALIZATION, ILLUMINATED SIGN.

GRAPHIC SCALE



FILE NAME: L:\1658394-Nansmond\_Pkwy-Wilroy\_Rd\3\_Deliverables\Design\5394\_11(2).dwg LAYOUT NAME: 4\_PLOTTED: Friday, January 20, 2017 8:28am

OFFICE REVIEW SUMMARY  
PROJECT MANAGER: BM 100%  
PROJECT Q/A QC: SW 100%  
PROJECT ENGINEER: JT 100%  
TECHNICIAN: LS 100%  
DRAFTSMAN: CAD 100%

CITY OF SUFFOLK DEPARTMENT OF PUBLIC WORKS  
NANSEMOND PARKWAY - WILROY ROAD  
INTERSECTION IMPROVEMENTS

SIGNAL PLAN  
SUFFOLK, VIRGINIA

DATE: 1/18/17  
SIGNAL POLE DESC: CHANGED MP-1 TO MP-3

ISSUE DATE: DECEMBER 2016

SHEET 11(2)