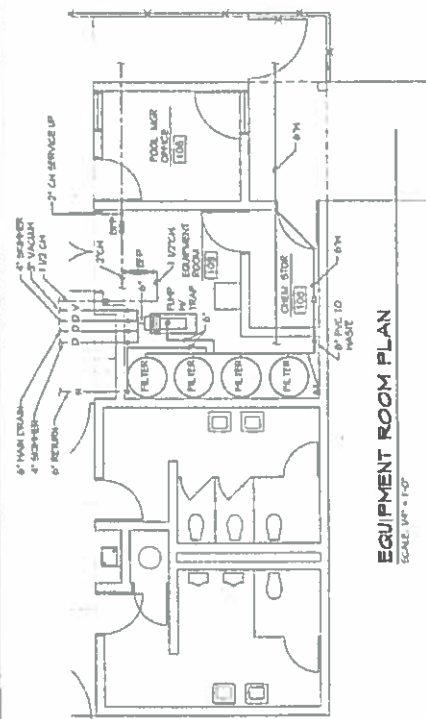
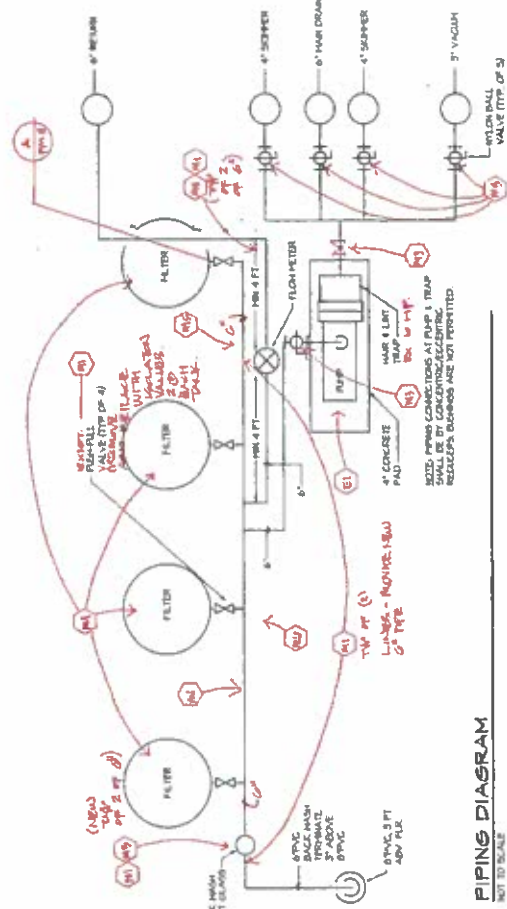


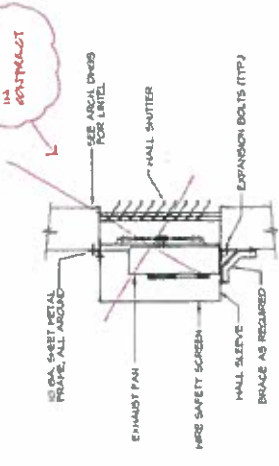
NOTE: EXISTING DRAWINGS DATED 15 JANUARY 1991 WERE PREPARED BY HALLER TODD SADDLER ARCHITECTS, INC AND CARRINGTON ENGINEERS, P.C. THESE DRAWINGS ARE ONLY SHOWN FOR REFERENCE OF THE PROPOSED CONSTRUCTION DRAWINGS SET AT THIS DATE. BOTH FIRMS ARE NOT INVOLVED WITH THE REPAIR WORK AND ASSUME NO LIABILITY. AGENCY OF AS BUILT CONDITIONS HAS NOT BEEN VERIFIED BY SBECA AUBURN, INC. HALLER TODD SADDLER ARCHITECTS, INC AND/OR CARRINGTON ENGINEERS, P.C.



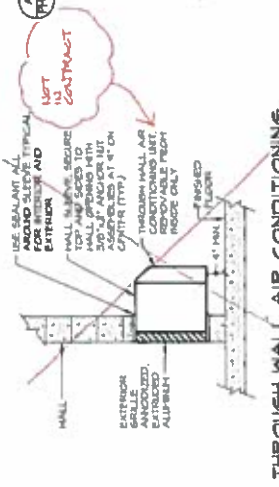
EQUIPMENT ROOM PLAN
SCALE: 1/4" = 1'-0"



PIPING DIAGRAM
NOT TO SCALE

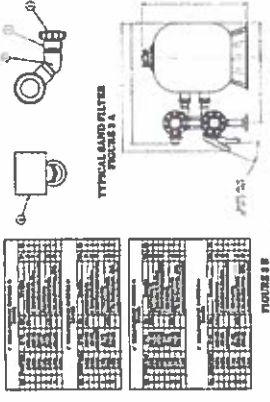


EXHAUST FAN MOUNTING DETAIL
NOT TO SCALE



THROUGH WALL AIR CONDITIONING UNIT MOUNTING DETAIL
NOT TO SCALE

TANDEM SYSTEM PLUMBING KIT
FILTER ABOVE KIT



TANDEM SYSTEM PLUMBING KIT
PAGE 10

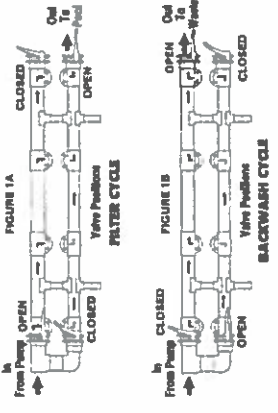
TANDEM SYSTEM PLUMBING KIT
PAGE 7

1. Read entire kit instructions carefully. Proper operation is essential. This manual is not to be used as a substitute for proper operation instructions for your specific filter type.
2. Read and understand the set-up operation instructions for your specific filter type.

TO PREVENT EQUIPMENT DAMAGE AND POSSIBLE INJURY, ALWAYS TURN THE PUMP OFF BEFORE CHANGING THE VALVE POSITION.

1. Adjust the sand level in the filter to the level specified in the manual when the filter is used for backwash. A filter rated for 10 gpm and 12 ft bed sand should be used for backwash.

SAND FILTER SYSTEM VALVE POSITION



READ AND FOLLOW ALL SAFETY INSTRUCTIONS

READ AND FOLLOW ALL SAFETY INSTRUCTIONS

READ AND FOLLOW ALL SAFETY INSTRUCTIONS



GRAPHIC SCALES

