



CITY OF SUFFOLK

Purchasing Division

P.O. Box 1858, Suffolk, VA 23439-1858; T (757) 514-7520; Fax (757) 514-7524

February 22nd, 2017

ADDENDUM #1

College Drive Roundabout

IFB No. 17059-CN

The following revisions have been made to the Bid Form associated with the City of Suffolk's IFB No.17059-CN. The bidder shall utilize this updated bid form:

- 1) Bid Form - Item 37 "Remove Light Pole", Item 39 "Remove Trees/Shrub", Item 40 "Selective Tree Removal Trimming and Clearing" have been removed, and therefore are no longer bid items.
- 2) Bid Form – Item 20 "Clearing and Grubbing" quantity has been revised from 2 AC to 3.1 AC, Item 21 – "Regular Seed" has been revised from 697 LB to 752 LB, Item 22 – "Lime" has been revised from 53 TON to 11.9 TON, Item 23 – "Fertilizer" has been revised from 4 TON to 0.9 TON.
- 3) Bid Form – Items 55-58, additional note added to designate items as "Type B, Class 2".

The following revisions have been made to the plans:

- 1) Title Sheet GI001 – Plan approval signature block has been modified.
- 2) Demolition Plans CD101, 102, 103, 104, 105 – Item number 3 "Remove Tree/Shrub" has been removed and replaced with "not used". Item 7 "Remove Lightpole" has been clarified to add "by others" to the note. A "demolition/clearing and grubbing" hatch has been added to help clarify the limits of the clearing and grubbing pay item. A "remove pavement" hatch has been added to help further clarify the adjustment in the hatching.
- 3) Site Improvements Plan CI101 – "These plans are unfinished and are not to be used for any type of construction" note removed.
- 4) Site Improvements Plan CI105 – Storm Sewer Schedule revised to remove structure 8A to 109 callout.

The following points of clarification were made at the pre-bid meeting on February 15th, 2017:

- 1) All contractors, subcontractors, suppliers, vendors must be pre-qualified by VDOT.
- 2) Quality Assurance requirements will be in accordance with the VDOT LAP manual.
- 3) The existing light fixtures will be removed by Dominion Virginia Power, and the new light fixtures and conductor will be provided and installed by Dominion Virginia Power. The bid item for 2" Schedule 40 PVC pipe shall be placed under the entrance right of Station 10+50, College Drive.
- 4) Ingress/egress to adjacent businesses must be maintained at all times.

- 5) There is no SWAM requirement.
- 6) The contract fixed completion date shall be 270 days from Notice to Proceed.
- 7) A discrepancy was potentially identified for the lime quantity in the bid form. The engineer will verify the quantity and revise in an addendum if required.

The sign-in sheet from the pre-bid meeting is attached.

The following questions were submitted to City Purchasing, and the responses are provided.

Bid Questions & Responses:

1. Question - On recent projects in the City of Suffolk, Traffic Engineering has required pavement marking arrows and symbols to be Type B, Class 2 Preformed Thermoplastic. I only see material for this project as being Type B, Class 1.

Answer – The pavement marking arrows (Bid Items # 55-58) shall be Type B, Class 2.

- 2. Question – There is no pay item for the “Lighting Fixtures” noted on C-001. I believe at the pre-bid it was indicated they would be by Dominion Power. Will Dominion disconnect the power for item #37 “Remove Light Pole” and should the contractor plan to simply dispose of them.

Answer – Correct, the lighting fixtures will be provided and installed by Dominion Power. The existing lighting fixtures will be removed and disposed by Dominion Power in advance of construction. Remove Light Pole has been removed from the bid tabulation and has been noted as “by others” on the plans.

3. Question - Comment #11 on drawing C-003 states “The contractor will be responsible for providing the Geotechnical (Soils) report ..., this report is actually included in the specifications provided by the City of Suffolk. Is another report required?

Answer – No additional materials reports are required to be provided by the bidder/contractor.

4. Question - The project bids March 1, 2017 and includes a contract completion date of 270 days. If the City takes 90 days to award the project (as commented at the pre-bid) that indicates an award date of around June 1, 2017 with a resulting completion date of +/- March 1, 2018. Asphalt Paving in Tidewater from January through around March 15 is questionable at best because of the temperature requirements to place the surface asphalt and even the concrete. Will the City of Suffolk consider a project shut down during this period or could the contractor be held accountable for the liquidated damages likely caused by winter.

Answer - Contract completion will be 270 calendar days from the date of Notice to Proceed. Notice to Proceed will be issued once the low bidder has been identified and deemed to be a responsive bidder and has provided all required documentation and a contract has been executed. The dates and times for these tasks are indeterminate at this time and could take as long as 90 days more or less. Contract time limits will be in accordance with the language contained in the IFB and all associated publications referenced therein.

5. Please confirm item #22 – 500 tons of lime

Answer – The quantity for item #22 has been revised to 11.9 tons of lime. Please see other adjustments to bid form for seeding and fertilizer as well.

6. Question - Drawing C-003 General Note #21 States "Underdrains will be installed on raised medians in accordance with current City of Suffolk PFM Specifications and standards". No underdrains are shown in the raised medians nor are there outfall available at most locations. Are underdrains actually required in the raised medians?
Answer – No underdrains are required on the project.
7. Question - Most permits required are included in the drawings and specifications with a cost for each included. Drawing C-003 states that a "Land Use Permit" is required. The section further indicates bond amounts and processing fees are required for this Land Use Permit. Is it possible to supply these cost.
Answer – The permits required to be supplied by the bidder include the permits as provided on pages 64-68 of the Invitation for Bid (IFB), as well as the VDEQ VSMP General Permit for stormwater discharges from construction activities. Bonding and insurance requirements are as established in Sections A and B of the IFB.
8. Question - Item #20 is for 2 Acres of clearing and grubbing. Item 40 is for 2 acres of Selective Tree Removal Trimming & Clearing. Item 39 is for Remove trees/shrubs. These items certainly overlap. Could you possibly give a better description and even indicate the areas so that a competitive cost can be estimated for the different items.
Answer – We have eliminated the pay items for Remove Trees/shrubs (Item 39), and the Selective Tree Removal Trimming and Clearing (Item 40). All tree and vegetation removal within the construction limits will be paid for under Item 20 – Clearing and Grubbing. The acreage for this item has been updated.
9. Question - Item #16 is for 200 CY of Undercut Excavation. What is estimated to replace this undercut material and how is it paid for?
Answer – The replacement of the undercut shall either be paid for as Borrow Excavation, or Borrow Excavation – Min. CBR-20, depending on the location of the undercut (see response to question 10 below for additional information).
10. Question - Item #17 is for 4,800 CY of Borrow Excavation. Item #18 is for 1,500 CY Borrow Excavation – Min. CBR-20. Can you explain exactly where each is to be utilized?
Answer – Item #17 is for fill material outside of the roadway prism, such as under the central roundabout island of the roundabout, under the medians, and under the sidewalks & sideslopes. Item #18 is for fill material under pavement prism.
11. Question - Drawing CI-201 shows all kinds of existing utilities over the location of the new water and sanitary lines. Will these lines be relocated prior to construction?
Answer – The lines shown on CI-201 will not be relocated prior to construction. The utilities will remain in place.
12. Question - Item 20- Clearing & Grubbing 2 ac (Understood) but Item 40 Is also 2 ac? Cannot find the call out for item 40 in plans? Please advise.
Answer – See response to question 8.
13. Question - what does the " prepared soil mixture" consist of (sheet LP 101 "shrub planting detail")
Answer – Prepared soil mixture is topsoil. Please note that the prepared soil mixture will only be added for the plantings that are located outside of the bottom 8' of the dry swale (see detail on Sheet CI501). Plantings within the 8' flat bottom shall be made within the specified filter media.

14. Question - According to sheet LP101, the only part of this project to get landscaping is Armstead rd? Please advise.
Answer – Correct, the only portion of the project to be landscaped (other than seeding) is Armstead.
15. Question – What is the warranty period on the landscape?
Answer – The warranty/guarantee shall be in accordance with Section 605.06 of the VDOT Road and Bridge specifications, which stipulates that the warranty shall be in accordance with the performance bond, which is two years from project completion.
16. Question – With regards to item 54 from the General Conditions, please confirm that the City of Suffolk is exempt from paying taxes on goods and materials that it (the City) purchased directly and that goods and materials purchased by a Contractor or Subcontractor are obligated to pay taxes.
Answer – The City of Suffolk is exempt from paying taxes on goods and materials it purchases directly. All goods and materials purchased by a Contractor or Subcontractor are obligated to pay taxes.
17. Question - From the Invitation to Bid, do suppliers, subcontractors, vendors, etc. have to be pre-qualified by VDOT, or is it just the Contractor that must be pre-qualified?
Answer – All suppliers, subcontractors, vendors must be pre-qualified by VDOT.
18. Question – Does all material on the project have to be made in a domestic factory like it would be on a VDOT project?
Answer – The Buy America provisions are only applicable on federal-aid projects. The project does not have federal funding, and therefore there is no requirement on the location of production/source of material.
19. Question – Should I follow City of Suffolk specifications and standards for all water and sewer material or is it governed by VDOT?
Answer – Measurement and payment shall be in accordance with VDOT specifications; however in terms of materials, details and operational requirements, the City of Suffolk specifications and standards are to be used on the project.
20. Question - if it is Suffolk standards does slip joint ductile iron pipe with fast grip restrained gaskets work as restrained joint pipe since Suffolk does allow it?
Answer – The slip joint ductile iron pipe with fast grip restrained gaskets is acceptable.
21. Question - Plan Sheet CI-101- States "Plans are unfinished and not to be used for any type construction" will an approved set for construction be issued before the bid date?
Answer – Note has been removed.
22. Question - Plan Sheet CI-105-30" Storm Drain pipe from STR.#8A to STR.#109 as stated in the drainage description or 30" HDPE as shown in the plan view?
Answer – Structure 8A to 109 is believed to be HDPE. We have removed the description from 8A to 109 in the schedule as there is no work proposed for this pipe run and to avoid the discrepancy/confusion.
23. Question - What permit /fees will be required. Can I get a break down & cost per each to be sure they are included?
Answer – Please see response to question 8.

24. Question - Item 37- are these the light poles that Dominion Power is removing? What is remaining for the contractor to remove?
Answer – Item 37 has been eliminated. DVP will remove the existing light poles.
25. Question - For clarification purposes, the contractor will have no work associated with traffic signals?
Answer – Correct, no traffic signal work is required by the contractor.
26. Question - Under what section of the “LAP” manual would the Quality assurance requirements be outlined.
Answer – Quality Assurance requirements shall be in accordance with Chapter 13.2 of the VDOT LPA manual.
27. Question - Will the contractor be required to provide the city a trailer, if so what are the requirements? At what location?
Answer – The contractor is not required to provide the city a trailer.
28. Question - what is the stone requirement under the curb for the CG-7 & CG-3? Profile on C-002 appears to be 10” yet the detail on CI501 shows no stone?
Answer – Stone shall be extended a minimum of 12” behind the back of the curb (both CG-7 and CG-3). The depth of stone under the CG-3 curb will be approximately 3” to allow for the minimum 13” curb height, and the depth of stone under the CG-7 curb will be approximately 8”.
29. Question - No detail for CG-12 Detectable warning surface.
Answer – Bidder shall follow detail in VDOT Road and Bridge Standards.
30. Question – Detail/spec. for 2” conduit, what are backfill requirements?
Answer – Backfill material 3” above and below the conduit shall be sandy fill, free of any stones, cinders, wood, roots, debris, etc. Compacted backfill, extending from finished grade (or below pavement) to the sandy backfill above the conduit, shall be suitable material found during regular excavation for installation of the conduit; that is, free of any stones, cinders, wood, roots, debris, etc.

If you have any questions regarding Addendum Number 1, please contact the Senior Buyer, Cindy Norfleet, at (757) 514-7522 or via e-mail at cnorfleet@suffolkva.us.

Receipt of Addendum No. 1 must be acknowledged on the BID FORM.

Bid opening will remain at 3:00 p.m. March 1st, 2017.

Attachments:

1. Bid Form Pages 16-21
2. Revised Plan Sheets GI001, CD101-105, CI101 & CI105
3. Pre-bid sign in sheet


Cindy Norfleet, CPPB, Senior Buyer

REVISED BID FORM

TO: Purchasing Division
442 West Washington Street, Room 1086
Suffolk, VA 23434-5237

BID: College Drive Roundabout

DUE: March 1, 2017

TIME: 3:00 p.m., Local

_____ (Company) quotes firm price(s) below, exclusive of all state sales taxes, to furnish all labor, materials, equipment, transportation, licenses, permits, Quality Control Testing and Inspections in accordance with VDOT specifications and VDOT LAP Manual revised April 2015 and fees required to provide installation of roadway improvements including, but not limited to paving, curb and gutter systems, lighting, utilities, pedestrian accommodations, landscaping and all appurtenances and incidental materials and equipment, complete and in place in accordance with all specifications, terms, conditions, and drawings herein.

Bidder agrees to begin the Work within ten (10) days of Notice to Proceed and that the project will be completed within 270 calendar days of the Notice to Proceed.

The bids will be awarded to the lowest responsive and responsible bidder based on the "TOTAL BID.

SCHEDULE OF PRICES College Drive Roundabout

Bid Submitted BY: _____

Prices shall include all labor, materials, equipment, supplies, Quality Control Testing and Inspections in accordance with VDOT specifications and VDOT LAP Manual revised April 2015, insurance, bonds, permits, and fees for the construction of proposed the roundabout and all incidental work called for in the Contract Documents. See instructions to Bidders and Special Provisions of this document in regard to the use of this form.

ITEM NO.	VDOT Spec Section	ITEM DESCRIPTION	QUANTITY	UNIT	UNIT PRICES	TOTAL PRICE
1	513	Mobilization	1	LS		
2	517	Construction Surveying	1	LS		
3	315	Asphalt Concrete Type SM-12.5A	1,463	TON		
4	315	Asphalt Concrete Type BM-25.0A	2,193	TON		
5	305	Aggregate Base Material Type I No. 21A	6,279	TON		
6	502	Std. Combination Curb and Gutter CG-7	441	LF		
7	502	Radial Combination Curb and Gutter CG-7	1,886	LF		
8	502	Std. Curb CG-3	1,201	LF		
9	502	Radial Curb CG-3	1,673	LF		
10	502	NS Radial Curb Modified CG-3	594	LF		
11	502	Concrete Class A4.5	71	CY		

ITEM NO.	VDOT Spec Section	ITEM DESCRIPTION	QUANTITY	UNIT	UNIT PRICES	TOTAL PRICE
12	504	Hydraulic Cement Concrete Sidewalk 4"	750	SY		
13	504	CG-12 Detectable Warning Surface	48	SY		
14	504	Truncated Domes	13	SY		
15	303	Regular Excavation	4,600	CY		
16	303	Undercut Excavation	200	CY		
17	303	Borrow Excavation	4,800	CY		
18	280	Borrow Excavation - Min. CBR-20	1,500	CY		
19	602	Topsoil, Class A 4"	1,556	CY		
20	301	Clearing and Grubbing	3.1	AC		
21	603	Regular Seed	752	LBS		
22	603	Lime	11.9	TON		
23	603	Fertilizer (15-30-15)	0.9	TON		
24	505	Guardrail GR-2A 8' Post	150	LF		
25	505	Guardrail Terminal GR-11	1	EA		
26	505	Alternative Breakaway Cable Terminal (GR-9)	1	EA		
27	507	Fence FE-CL	800	LF		
28	303	Temporary Silt Fence	3,800	LF		
29	303	Allaying Dust	80	HR		
30	303	Inlet Protection, Type B	6	EA		
31	303	Check Dam, Rock Type 1	5	EA		
32	Suppl. Tech.	Fence Tree Protection	2,771	LF		
33	508	Demolition of Pavement (Flexible)	5,739	SY		
34	508	Demolition of Pavement (Rigid)	2,179	SY		
35	315	Sawcut - Asphalt Concrete Pavement	2,529	LF		
36	315	Sawcut - Concrete Pavement	88	LF		
37	510	Remove Fence	1,386	LF		
38	510	Remove Sign	11	EA		
39	510	Relocate Sign	3	EA		
40	510	Remove Brick Monument	1	EA		
41	520	Relocate Existing Fire Hydrant	1	EA		
42	510	Remove Manhole	1	EA		
43	412	Mill Asphalt Pavement	2,148	SY		
44	502	Removal of Combination Curb and Gutter	842	LF		
45	502	Removal of Curb	886	LF		
46	520	Adjust Utility to Match Finished Grade	1	EA		

ITEM NO.	VDOT Spec Section	ITEM DESCRIPTION	QUANTITY	UNIT	UNIT PRICES	TOTAL PRICE
47	704	Type B, Class I Pavement Line Marking 4"	3,597	LF		
48	704	Type B, Class I Pavement Line Marking 6"	192	LF		
49	704	Type B, Class I Pavement Line Marking 8"	4,910	LF		
50	704	Type B, Class I Pavement Line Marking 12"	60	LF		
51	704	Type B, Class I Pavement Line Marking 24"	1,171	LF		
52	704	Pavement Message Marking Elongated Arrow Single, Type B, Class 2	20	EA		
53	704	Pavement Message Marking Elongated Arrow Double, Type B, Class 2	8	EA		
54	704	Pavement Message Marking Elongated Arrow Triple, Type B, Class 2	4	EA		
55	704	Pavement Message Marking Yield Triangles, Type B, Class 2	28	EA		
56	701	Sign Panel	312	SF		
57	701	Sign Post STP-1, 2"	44	EA		
58	701	Sign Post STP-1, 2.5"	4	EA		
59	520	Sanitary Sewer Pipe (8" DI)	399	LF		
60	520	Sanitary Sewer Manhole (48" Diameter)	2	EA		
61	520	Manhole Frame & Cover (Standard)	2	EA		
62	520	16" DI (Restrained Joint Pipe)	278	LF		
63	520	16" Butterfly Valves	3	EA		
64	520	16" x 16" Tee (Cut In)	2	EA		
65	520	16" Cap	2	EA		
66	520	Fire Hydrant Assemblies	2	EA		
67	520	2" Schedule 40 PVC	96	LF		
68	512	Group 2 Channelizing Devices	75,200	DAY		
69	512	Construction Pavement Marking (Ty. F Cl. I - 4")	10,000	LF		
70	512	Construction Pavement Marking (Ty. F Cl. I - 24")	400	LF		
71	512	Construction Pavement Marking Ty. D Elongated Arrow	60	EA		
72	512	Electronic Arrow	400	HR		
73	512	Traffic Barrier Service	200	LF		
74	512	Flagger Service	120	HR		
75	512	Construction signs	1,330	SF		
76	Suppl. Tech.	Filter Media	465	CY		
77	302	NS Shallow Depth Curb Inlet	2	EA		

ITEM NO.	VDOT Spec Section	ITEM DESCRIPTION	QUANTITY	UNIT	UNIT PRICES	TOTAL PRICE
78	302	NS DI-3B Top, L=4'	1	EA		
79	302	Drop Inlet DI-3B, L=4'	1	EA		
80	302	Drop Inlet DI-3B, L=6'	1	EA		
81	320	Drop Inlet DI-3BB, L=4'	1	EA		
82	302	15" Concrete Pipe	415	LF		
83	302	15" End Section ES-1	3	EA		
84	204	Dry Riprap, Class I 18"	190	SY		
85	314	Coarse Aggregate No. 8 (3" Depth)	86	TON S		
86	504	Bedding Material No. 57 (18" Depth)	720	TON S		
87	107	Landscape	1	LS		
TOTAL BID						

REFERENCES

Indicate below a listing of at least three (3) recent references for which you have provided similar services. Include the date that services were furnished and the name, address, and phone number of the person we have your permission to contact.

	<u>Client/Address</u>	<u>Date</u>	<u>Contact Person</u>	<u>Phone No.</u>
1)	_____	_____	_____	_____

2)	_____	_____	_____	_____

3)	_____	_____	_____	_____

Company Name: _____
Address: _____
City / State / Zip: _____
Person Quoting: _____ Title: _____
Telephone: _____ FAX No.: _____
E-mail: _____ Mobile No.: _____
Social Security Number or FIN Number: _____

I certify that this bid is made without prior understanding, agreement, or connection with any corporation, firm, or person submitting a bid for the same equipment/materials/ service and is in all respects fair and without collusion or fraud. I understand that collusive bidding is a violation of State and Federal law and can result in fines, prison sentences and civil damage awards. I agree to abide by all conditions of this bid and certify that I am authorized to sign this bid for the bidder.

Upon Receipt of a Notice of Award, or a Notice of Intent to Award, the successful bidder shall submit the completed forms in Section B of the Invitation for Bids, within 15 working days. Failure to comply and enter into a contract may be cause to take action against the bidder's bond and make award to the next lowest bidder. Such action will not restrict the City against seeking other remedies as may be allowed.

Bidder agrees to begin the Work within ten (10) days of Notice to Proceed, and that Final Completion shall be on or before two hundred seventy (270) consecutive calendar days after the Notice to Proceed date.

Bidder has examined copies of all the Bid Documents including the following Addenda:

<u>Date</u>	<u>Number</u>
_____	_____
_____	_____
_____	_____
_____	_____

I certify by my signature below that I have received the documents associated with this bid and understand that the review for completeness of these bid documents and the understanding and comprehension of the bid specifications is solely my responsibility; based on this, by my signature below I waive all rights to further claims against the City of Suffolk that the document were incomplete or not understandable.

I certify that the bidder represented herein is eligible to bid with respect to all applicable sections of State and Local Government Conflict of Interest Act, Code of Virginia, Section 2.1-639.1 et. seq.

Signature: _____

Date: _____

(Person signing bid should show title or authority to bind the firm in a contract.)

CLARK NEXSEN

432 MAIN STREET, SUITE 1800
 WICHITA BEACH, VIRGINIA 23092
 TEL: 434.566.0



Ian D. Johnston
 2017.03.07 09:16:10 -05:00

CITY OF SUFFOLK - DEPARTMENT OF PUBLIC WORKS
 SUFFOLK, VIRGINIA

CHNG: 0960
 DATE: 01/27/2017
 DESIGN: WSD
 DRAWN: GAD
 REVIEW: CIA
 RETWORKS

TITLE SHEET

GI001

SHEET 1 OF 37



COLLEGE DRIVE ROUNDABOUT

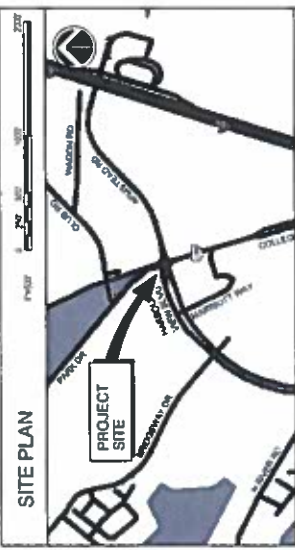
CITY OF SUFFOLK, VIRGINIA

DEPARTMENT OF PUBLIC WORKS
 STATE PROJECT U000-133-377, P101 (UPC 104361)
 JANUARY 27, 2017
 FINAL SUBMITTAL



INDEX OF DRAWINGS:

CHG NO	DESCRIPTION	SHEET
000	GENERAL NOTES	1
001	PLAN, SECTION AND DETAIL PLAN	2
002	PROFILES (ELEVATIONS AND DETAIL NOTES)	3
003	PROPOSED IMPROVEMENTS AND DETAILS	4
004	CONSTRUCTION DETAIL CONTROL POINTS AND DETAILS	5
005	SWAMP NOTES	6
006	SWAMP PLAN	7
007	SWAMP SECTION	8
008	DEVELOPER PLAN	9
009	DEVELOPER PLAN	10
010	DEVELOPER PLAN	11
011	DEVELOPER PLAN	12
012	DEVELOPER PLAN	13
013	DEVELOPER PLAN	14
014	DEVELOPER PLAN	15
015	DEVELOPER PLAN	16
016	DEVELOPER PLAN	17
017	DEVELOPER PLAN	18
018	DEVELOPER PLAN	19
019	DEVELOPER PLAN	20
020	DEVELOPER PLAN	21
021	DEVELOPER PLAN	22
022	DEVELOPER PLAN	23
023	DEVELOPER PLAN	24
024	DEVELOPER PLAN	25
025	DEVELOPER PLAN	26
026	DEVELOPER PLAN	27
027	DEVELOPER PLAN	28
028	DEVELOPER PLAN	29
029	DEVELOPER PLAN	30
030	DEVELOPER PLAN	31
031	DEVELOPER PLAN	32
032	DEVELOPER PLAN	33
033	DEVELOPER PLAN	34
034	DEVELOPER PLAN	35
035	DEVELOPER PLAN	36
036	DEVELOPER PLAN	37
037	DEVELOPER PLAN	38
038	DEVELOPER PLAN	39
039	DEVELOPER PLAN	40
040	DEVELOPER PLAN	41
041	DEVELOPER PLAN	42
042	DEVELOPER PLAN	43
043	DEVELOPER PLAN	44
044	DEVELOPER PLAN	45
045	DEVELOPER PLAN	46
046	DEVELOPER PLAN	47
047	DEVELOPER PLAN	48
048	DEVELOPER PLAN	49
049	DEVELOPER PLAN	50
050	DEVELOPER PLAN	51
051	DEVELOPER PLAN	52
052	DEVELOPER PLAN	53
053	DEVELOPER PLAN	54
054	DEVELOPER PLAN	55
055	DEVELOPER PLAN	56
056	DEVELOPER PLAN	57
057	DEVELOPER PLAN	58
058	DEVELOPER PLAN	59
059	DEVELOPER PLAN	60
060	DEVELOPER PLAN	61
061	DEVELOPER PLAN	62
062	DEVELOPER PLAN	63
063	DEVELOPER PLAN	64
064	DEVELOPER PLAN	65
065	DEVELOPER PLAN	66
066	DEVELOPER PLAN	67
067	DEVELOPER PLAN	68
068	DEVELOPER PLAN	69
069	DEVELOPER PLAN	70
070	DEVELOPER PLAN	71
071	DEVELOPER PLAN	72
072	DEVELOPER PLAN	73
073	DEVELOPER PLAN	74
074	DEVELOPER PLAN	75
075	DEVELOPER PLAN	76
076	DEVELOPER PLAN	77
077	DEVELOPER PLAN	78
078	DEVELOPER PLAN	79
079	DEVELOPER PLAN	80
080	DEVELOPER PLAN	81
081	DEVELOPER PLAN	82
082	DEVELOPER PLAN	83
083	DEVELOPER PLAN	84
084	DEVELOPER PLAN	85
085	DEVELOPER PLAN	86
086	DEVELOPER PLAN	87
087	DEVELOPER PLAN	88
088	DEVELOPER PLAN	89
089	DEVELOPER PLAN	90
090	DEVELOPER PLAN	91
091	DEVELOPER PLAN	92
092	DEVELOPER PLAN	93
093	DEVELOPER PLAN	94
094	DEVELOPER PLAN	95
095	DEVELOPER PLAN	96
096	DEVELOPER PLAN	97
097	DEVELOPER PLAN	98
098	DEVELOPER PLAN	99
099	DEVELOPER PLAN	100



SWMT Recipitation: Sheet

Project Name: COLLEGE DRIVE ROUNDABOUT
 SWMT Type and Level (SWMT Classification Designation): DRY SWALES

Latitude (decimal degree): 36° 52' 11.77" N
 Longitude (decimal degree): 76° 23' 56.87" W

Site Parcel #: 704
 MPA: 05/01/2016 (to be used for CDEA (check one))
 MPA: 05/01/2016 (to be used for CDEA (check one))

Number of Watersheds and Hydrologic Unit Code (HUC) District:
 Name: LOWER JAMES RIVER
 HUC: 22010102
 HUC Code: 020102010

Drainage Area of SWMT (acres): 1.11
 Total Impervium Area Draining to SWMT (acres): 1.11
 Total Project Area (acres): 1.52
 Total Discharge Area (acres): 1.11
 Average Runoff (in/hr): 1.14
 Permissible Runoff (in/hr): 1.11

CITY OF SUFFOLK
 DEPARTMENT OF PUBLIC WORKS
 300 COLLEGE DRIVE, SUITE 210
 SUFFOLK, VIRGINIA 23060

PROJECT AREA #133 AC
 PRE-DEVELOPMENT IMPROVEMENTS PER #133 AC
 POST-DEVELOPMENT IMPROVEMENTS PER #133 AC

CLARK KEXSEN

4525 MARKET STREET, SUITE 1400
 VIRGINIA BEACH, VIRGINIA 23462
 757-433-5500



CITY OF SUFFOLK - DEPARTMENT OF PUBLIC WORKS
 SUFFOLK, VIRGINIA
COLLEGE DRIVE ROUNDABOUT

DATE: 07/21/2017
 DESIGN: WSD
 DRAWING: CMB
 REVIEW: CTA
 REVISIONS: [Table with 2 columns: No., Description]

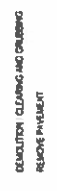
DEMOLITION PLAN

CD101
 SHEET 12 OF 37

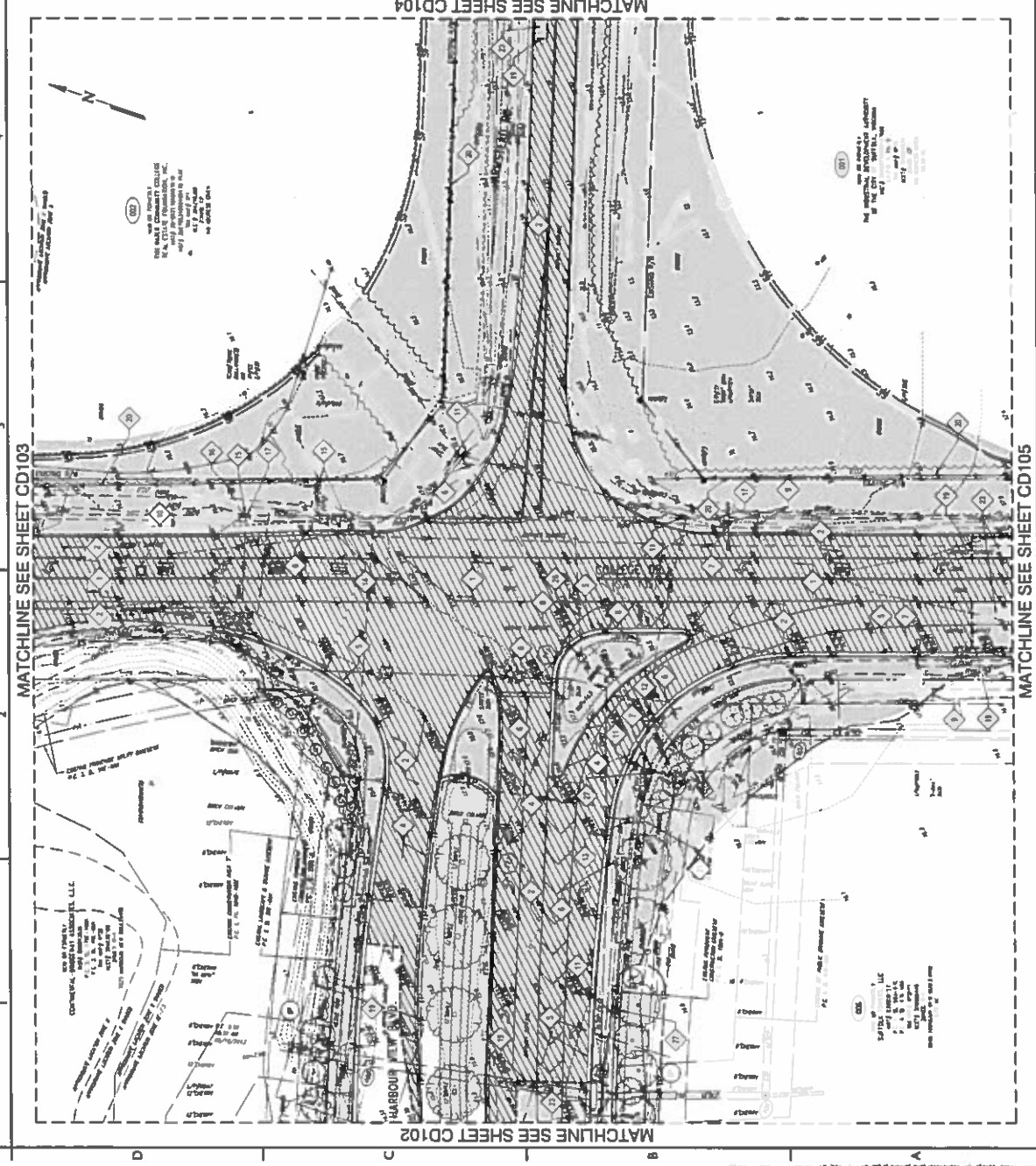


DEMOLITION NOTES

1. REMOVE CONCRETE
2. REMOVE ASPHALT
3. REMOVE EXISTING CURBS
4. REMOVE EXISTING SIDEWALKS
5. REMOVE EXISTING DRIVEWAYS
6. REMOVE EXISTING DRIVEWAY
7. REMOVE EXISTING DRIVEWAY
8. REMOVE EXISTING DRIVEWAY
9. REMOVE EXISTING DRIVEWAY
10. REMOVE EXISTING DRIVEWAY
11. REMOVE EXISTING DRIVEWAY
12. REMOVE EXISTING DRIVEWAY
13. REMOVE EXISTING DRIVEWAY
14. REMOVE EXISTING DRIVEWAY
15. REMOVE EXISTING DRIVEWAY
16. REMOVE EXISTING DRIVEWAY
17. REMOVE EXISTING DRIVEWAY
18. REMOVE EXISTING DRIVEWAY
19. REMOVE EXISTING DRIVEWAY
20. REMOVE EXISTING DRIVEWAY
21. REMOVE EXISTING DRIVEWAY
22. REMOVE EXISTING DRIVEWAY
23. REMOVE EXISTING DRIVEWAY
24. REMOVE EXISTING DRIVEWAY
25. REMOVE EXISTING DRIVEWAY
26. REMOVE EXISTING DRIVEWAY
27. REMOVE EXISTING DRIVEWAY
28. REMOVE EXISTING DRIVEWAY
29. REMOVE EXISTING DRIVEWAY
30. REMOVE EXISTING DRIVEWAY
31. REMOVE EXISTING DRIVEWAY
32. REMOVE EXISTING DRIVEWAY



GRAPHIC SCALE(S)



MATCHLINE SEE SHEET CD103

MATCHLINE SEE SHEET CD104

MATCHLINE SEE SHEET CD105

MATCHLINE SEE SHEET CD102

CLARK NEXSEN
 4325 MAIN STREET, SUITE 1400
 VIRGINIA BEACH, VIRGINIA 23462
 TEL: 435.9888



COLLEGE DRIVE ROUNDABOUT
 CITY OF SUFFOLK - DEPARTMENT OF PUBLIC WORKS
 SUFFOLK, VIRGINIA

CHANG: 4980
 DATE: 02/21/2017
 DESIGN: WSD
 DRAWING: CAD
 REVIEW: CIA
 REVISIONS: 0

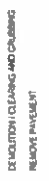
DEMOLITION PLAN

CD103
 SHEET 14 OF 17

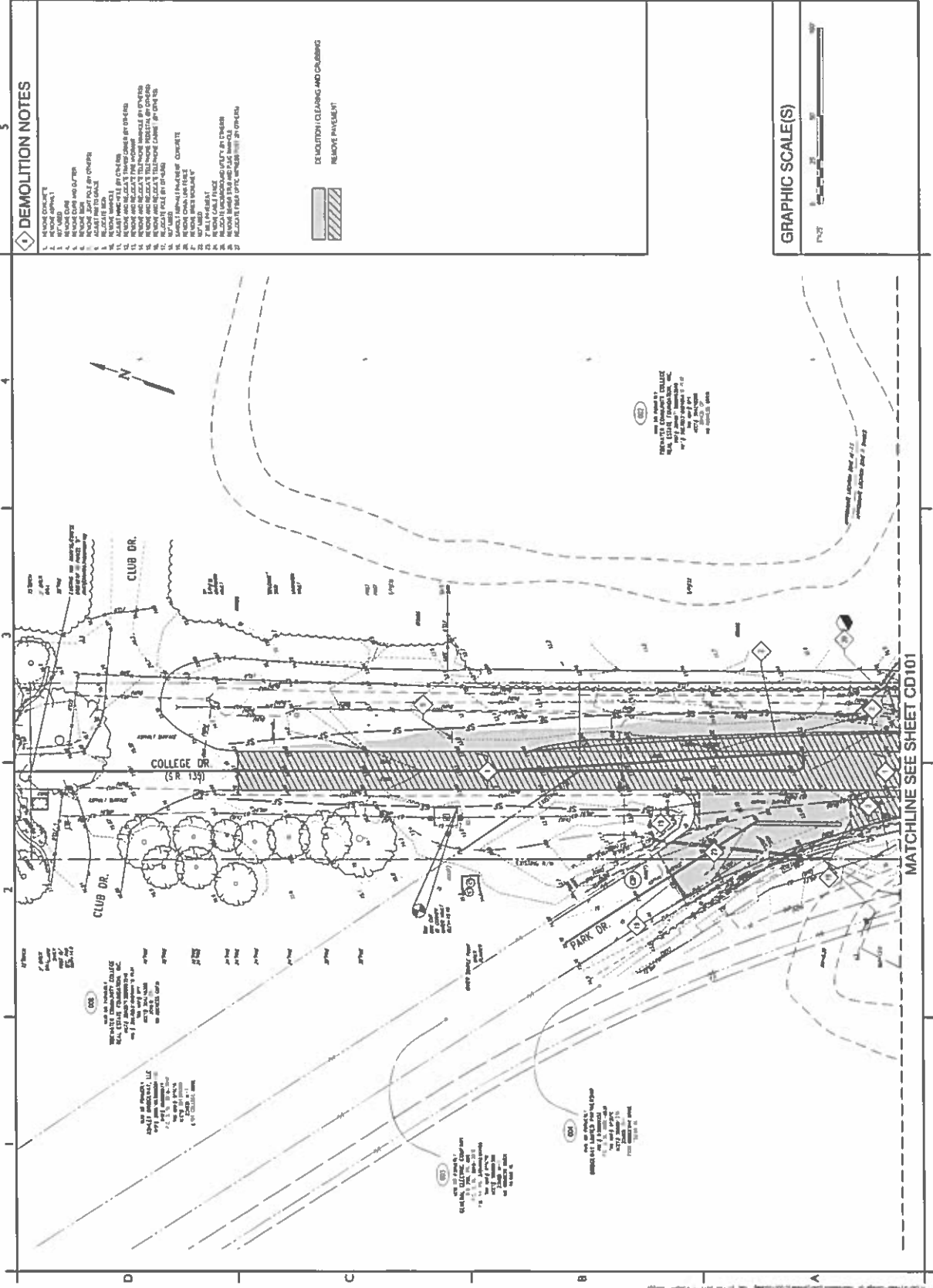
POST 2/23/17

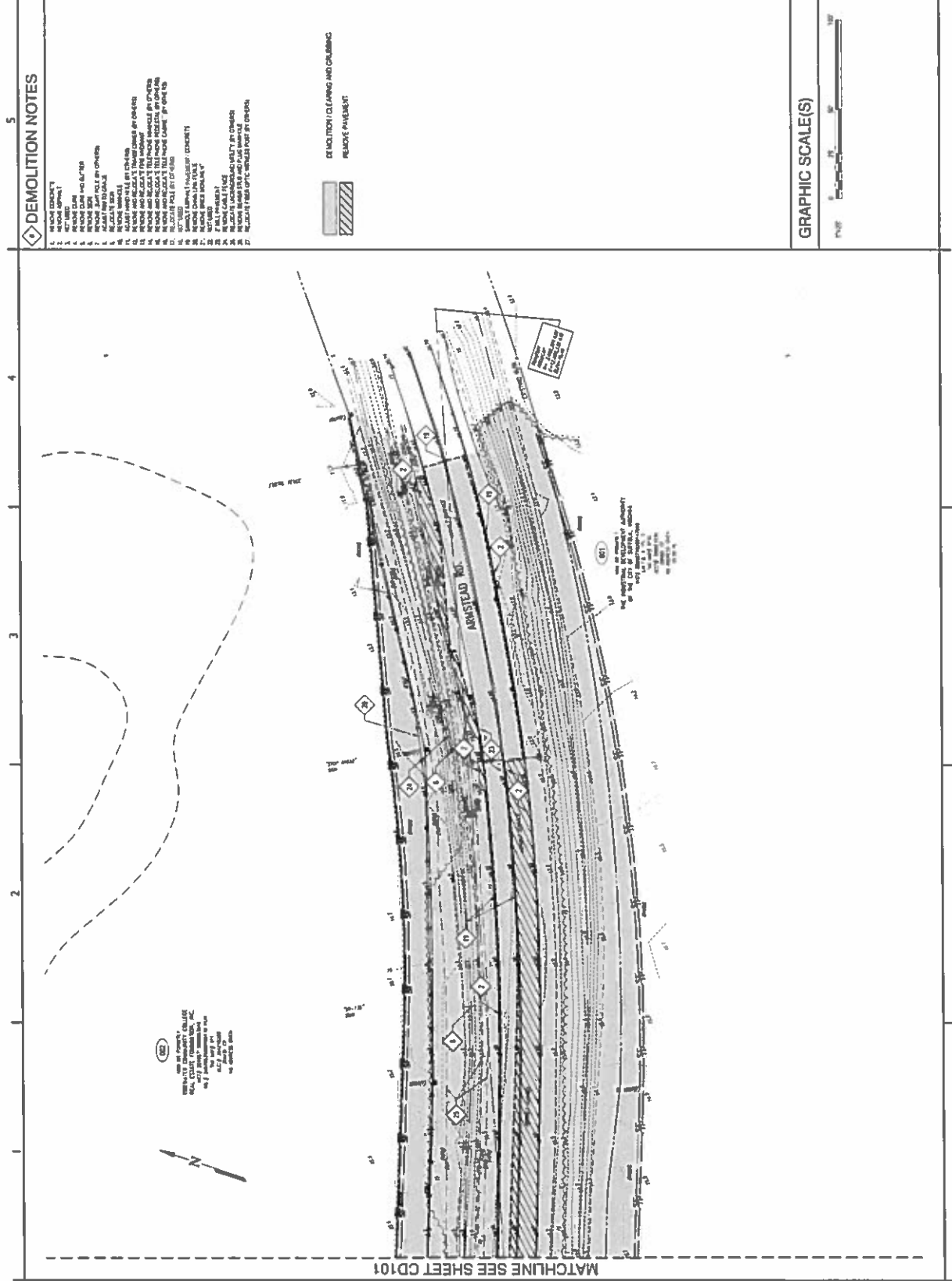
DEMOLITION NOTES

1. REMOVE CONCRETE
2. REMOVE PAVER
3. REMOVE ASPHALT
4. REMOVE DRIVE AND CURB
5. REMOVE SIDEWALK
6. REMOVE SIGN
7. REMOVE FENCE
8. REMOVE TREE
9. REMOVE BUSH
10. REMOVE GRASS
11. REMOVE EXISTING DRIVE
12. REMOVE EXISTING SIDEWALK
13. REMOVE EXISTING CURB
14. REMOVE EXISTING FENCE
15. REMOVE EXISTING SIGN
16. REMOVE EXISTING TREE
17. REMOVE EXISTING BUSH
18. REMOVE EXISTING GRASS
19. REMOVE EXISTING DRIVE
20. REMOVE EXISTING SIDEWALK
21. REMOVE EXISTING CURB
22. REMOVE EXISTING FENCE
23. REMOVE EXISTING SIGN
24. REMOVE EXISTING TREE
25. REMOVE EXISTING BUSH
26. REMOVE EXISTING GRASS
27. REMOVE EXISTING DRIVE
28. REMOVE EXISTING SIDEWALK
29. REMOVE EXISTING CURB
30. REMOVE EXISTING FENCE
31. REMOVE EXISTING SIGN
32. REMOVE EXISTING TREE
33. REMOVE EXISTING BUSH
34. REMOVE EXISTING GRASS
35. REMOVE EXISTING DRIVE
36. REMOVE EXISTING SIDEWALK
37. REMOVE EXISTING CURB
38. REMOVE EXISTING FENCE
39. REMOVE EXISTING SIGN
40. REMOVE EXISTING TREE
41. REMOVE EXISTING BUSH
42. REMOVE EXISTING GRASS
43. REMOVE EXISTING DRIVE
44. REMOVE EXISTING SIDEWALK
45. REMOVE EXISTING CURB
46. REMOVE EXISTING FENCE
47. REMOVE EXISTING SIGN
48. REMOVE EXISTING TREE
49. REMOVE EXISTING BUSH
50. REMOVE EXISTING GRASS





GRAPHIC SCALE(S)





DEMOLITION NOTES

1. REMOVE CURB
2. REMOVE SIDEWALK
3. REMOVE SIDEWALK
4. REMOVE SIDEWALK
5. REMOVE SIDEWALK
6. REMOVE SIDEWALK
7. REMOVE SIDEWALK
8. REMOVE SIDEWALK
9. REMOVE SIDEWALK
10. REMOVE SIDEWALK
11. REMOVE SIDEWALK
12. REMOVE SIDEWALK
13. REMOVE SIDEWALK
14. REMOVE SIDEWALK
15. REMOVE SIDEWALK
16. REMOVE SIDEWALK
17. REMOVE SIDEWALK
18. REMOVE SIDEWALK
19. REMOVE SIDEWALK
20. REMOVE SIDEWALK
21. REMOVE SIDEWALK
22. REMOVE SIDEWALK
23. REMOVE SIDEWALK
24. REMOVE SIDEWALK
25. REMOVE SIDEWALK
26. REMOVE SIDEWALK
27. REMOVE SIDEWALK
28. REMOVE SIDEWALK
29. REMOVE SIDEWALK
30. REMOVE SIDEWALK
31. REMOVE SIDEWALK
32. REMOVE SIDEWALK

 DEMOLITION CLEANING AND GRUBBING
 REMOVE REINFORCEMENT

GRAPHIC SCALE(S)



DEMOLITION PLAN

CD104
SHEET 15 OF 37



CLARK NEXSEN
4525 MAIN STREET, SUITE 1400
VIRGINIA BEACH, VIRGINIA 23462
757-433-8800



COLLEGE DRIVE ROUNDABOUT
CITY OF SUFFOLK - DEPARTMENT OF PUBLIC WORKS
SUFFOLK, VIRGINIA

CH. NO. 4980
 DATE: 07/21/2017
 DESIGN: WSD
 DRAWN: GMD
 REVIEW: CIA
 REVISIONS
 No. Date Description

CLARK NEXSEN

425 MAIN STREET, SUITE 1400
VIRGINIA BEACH, VIRGINIA 23462
757-433-8000



COLLEGE DRIVE ROUNDABOUT
CITY OF SUFFOLK - DEPARTMENT OF PUBLIC WORKS
SUFFOLK, VIRGINIA

CLIENT: 4980
DATE: 03/22/2017
DESIGN: WSD
DRAWING: GAD
REVIEW: CTA
REVISOR: JTB
DATE: 03/22/2017

SITE
IMPROVEMENTS
PLAN

C1101

SHEET 17 OF 37

POST
2/2/17

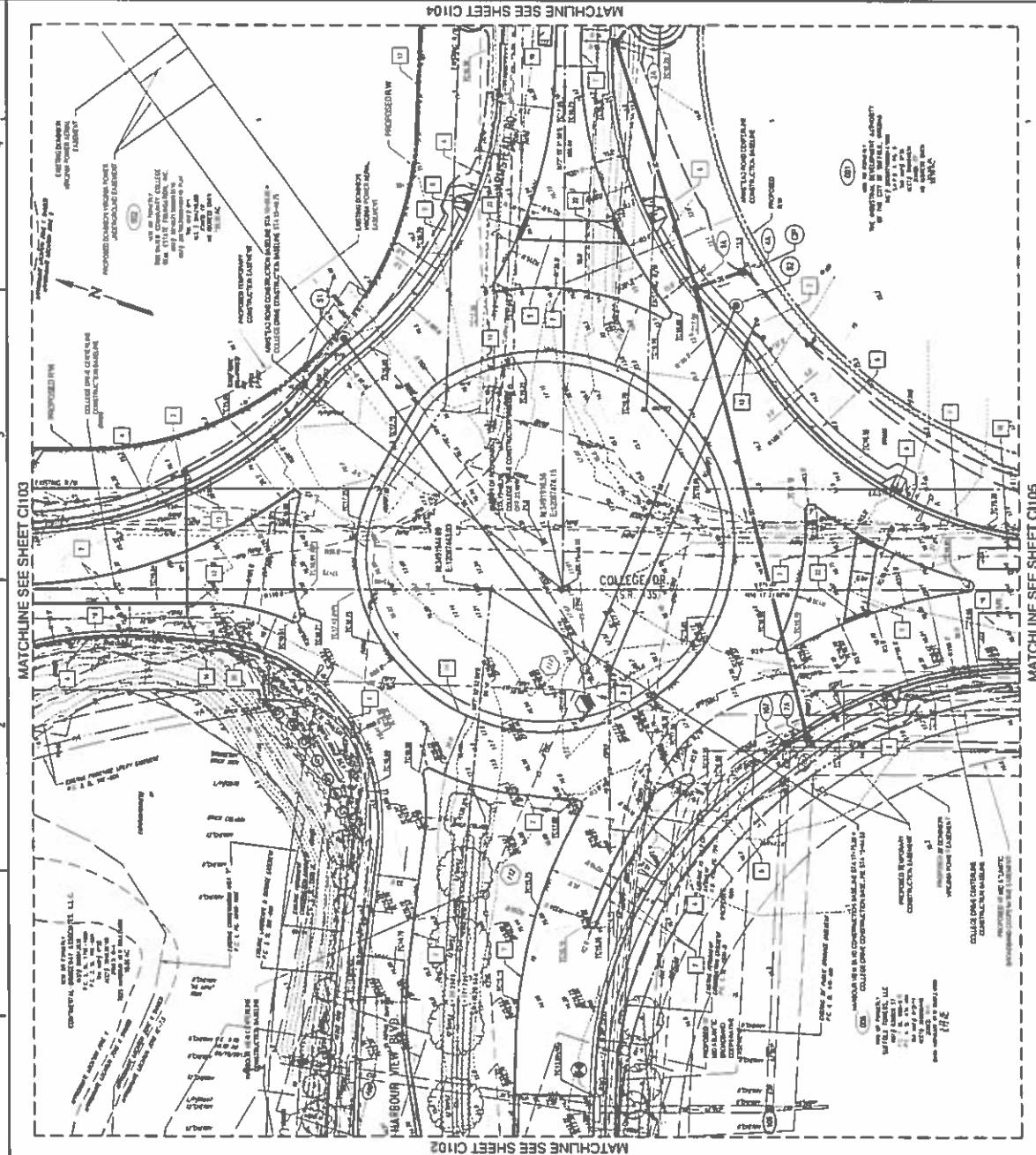
CONSTRUCTION NOTES

1. VERIFY EXISTING CONDITIONS WITH FIELD SURVEY.
2. ALL NEW CONSTRUCTION SHALL BE PERFORMED IN ACCORDANCE WITH THE LATEST EDITION OF THE VIRGINIA CONSTRUCTION CODE.
3. ALL NEW CONSTRUCTION SHALL BE PERFORMED IN ACCORDANCE WITH THE LATEST EDITION OF THE VIRGINIA CONSTRUCTION CODE.
4. ALL NEW CONSTRUCTION SHALL BE PERFORMED IN ACCORDANCE WITH THE LATEST EDITION OF THE VIRGINIA CONSTRUCTION CODE.
5. ALL NEW CONSTRUCTION SHALL BE PERFORMED IN ACCORDANCE WITH THE LATEST EDITION OF THE VIRGINIA CONSTRUCTION CODE.
6. ALL NEW CONSTRUCTION SHALL BE PERFORMED IN ACCORDANCE WITH THE LATEST EDITION OF THE VIRGINIA CONSTRUCTION CODE.
7. ALL NEW CONSTRUCTION SHALL BE PERFORMED IN ACCORDANCE WITH THE LATEST EDITION OF THE VIRGINIA CONSTRUCTION CODE.
8. ALL NEW CONSTRUCTION SHALL BE PERFORMED IN ACCORDANCE WITH THE LATEST EDITION OF THE VIRGINIA CONSTRUCTION CODE.
9. ALL NEW CONSTRUCTION SHALL BE PERFORMED IN ACCORDANCE WITH THE LATEST EDITION OF THE VIRGINIA CONSTRUCTION CODE.
10. ALL NEW CONSTRUCTION SHALL BE PERFORMED IN ACCORDANCE WITH THE LATEST EDITION OF THE VIRGINIA CONSTRUCTION CODE.
11. ALL NEW CONSTRUCTION SHALL BE PERFORMED IN ACCORDANCE WITH THE LATEST EDITION OF THE VIRGINIA CONSTRUCTION CODE.
12. ALL NEW CONSTRUCTION SHALL BE PERFORMED IN ACCORDANCE WITH THE LATEST EDITION OF THE VIRGINIA CONSTRUCTION CODE.
13. ALL NEW CONSTRUCTION SHALL BE PERFORMED IN ACCORDANCE WITH THE LATEST EDITION OF THE VIRGINIA CONSTRUCTION CODE.
14. ALL NEW CONSTRUCTION SHALL BE PERFORMED IN ACCORDANCE WITH THE LATEST EDITION OF THE VIRGINIA CONSTRUCTION CODE.
15. ALL NEW CONSTRUCTION SHALL BE PERFORMED IN ACCORDANCE WITH THE LATEST EDITION OF THE VIRGINIA CONSTRUCTION CODE.
16. ALL NEW CONSTRUCTION SHALL BE PERFORMED IN ACCORDANCE WITH THE LATEST EDITION OF THE VIRGINIA CONSTRUCTION CODE.
17. ALL NEW CONSTRUCTION SHALL BE PERFORMED IN ACCORDANCE WITH THE LATEST EDITION OF THE VIRGINIA CONSTRUCTION CODE.
18. ALL NEW CONSTRUCTION SHALL BE PERFORMED IN ACCORDANCE WITH THE LATEST EDITION OF THE VIRGINIA CONSTRUCTION CODE.
19. ALL NEW CONSTRUCTION SHALL BE PERFORMED IN ACCORDANCE WITH THE LATEST EDITION OF THE VIRGINIA CONSTRUCTION CODE.
20. ALL NEW CONSTRUCTION SHALL BE PERFORMED IN ACCORDANCE WITH THE LATEST EDITION OF THE VIRGINIA CONSTRUCTION CODE.
21. ALL NEW CONSTRUCTION SHALL BE PERFORMED IN ACCORDANCE WITH THE LATEST EDITION OF THE VIRGINIA CONSTRUCTION CODE.
22. ALL NEW CONSTRUCTION SHALL BE PERFORMED IN ACCORDANCE WITH THE LATEST EDITION OF THE VIRGINIA CONSTRUCTION CODE.
23. ALL NEW CONSTRUCTION SHALL BE PERFORMED IN ACCORDANCE WITH THE LATEST EDITION OF THE VIRGINIA CONSTRUCTION CODE.
24. ALL NEW CONSTRUCTION SHALL BE PERFORMED IN ACCORDANCE WITH THE LATEST EDITION OF THE VIRGINIA CONSTRUCTION CODE.
25. ALL NEW CONSTRUCTION SHALL BE PERFORMED IN ACCORDANCE WITH THE LATEST EDITION OF THE VIRGINIA CONSTRUCTION CODE.
26. ALL NEW CONSTRUCTION SHALL BE PERFORMED IN ACCORDANCE WITH THE LATEST EDITION OF THE VIRGINIA CONSTRUCTION CODE.
27. ALL NEW CONSTRUCTION SHALL BE PERFORMED IN ACCORDANCE WITH THE LATEST EDITION OF THE VIRGINIA CONSTRUCTION CODE.
28. ALL NEW CONSTRUCTION SHALL BE PERFORMED IN ACCORDANCE WITH THE LATEST EDITION OF THE VIRGINIA CONSTRUCTION CODE.
29. ALL NEW CONSTRUCTION SHALL BE PERFORMED IN ACCORDANCE WITH THE LATEST EDITION OF THE VIRGINIA CONSTRUCTION CODE.
30. ALL NEW CONSTRUCTION SHALL BE PERFORMED IN ACCORDANCE WITH THE LATEST EDITION OF THE VIRGINIA CONSTRUCTION CODE.

STORM SEWER SCHEDULE

- (1) 12" 15' S.P. 15' R.P. 8' S.L. 15'
- (2) 12" 15' S.P. 15' R.P. 8' S.L. 15'
- (3) 12" 15' S.P. 15' R.P. 8' S.L. 15'
- (4) 12" 15' S.P. 15' R.P. 8' S.L. 15'
- (5) 12" 15' S.P. 15' R.P. 8' S.L. 15'
- (6) 12" 15' S.P. 15' R.P. 8' S.L. 15'
- (7) 12" 15' S.P. 15' R.P. 8' S.L. 15'
- (8) 12" 15' S.P. 15' R.P. 8' S.L. 15'
- (9) 12" 15' S.P. 15' R.P. 8' S.L. 15'
- (10) 12" 15' S.P. 15' R.P. 8' S.L. 15'
- (11) 12" 15' S.P. 15' R.P. 8' S.L. 15'
- (12) 12" 15' S.P. 15' R.P. 8' S.L. 15'
- (13) 12" 15' S.P. 15' R.P. 8' S.L. 15'
- (14) 12" 15' S.P. 15' R.P. 8' S.L. 15'
- (15) 12" 15' S.P. 15' R.P. 8' S.L. 15'
- (16) 12" 15' S.P. 15' R.P. 8' S.L. 15'
- (17) 12" 15' S.P. 15' R.P. 8' S.L. 15'
- (18) 12" 15' S.P. 15' R.P. 8' S.L. 15'
- (19) 12" 15' S.P. 15' R.P. 8' S.L. 15'
- (20) 12" 15' S.P. 15' R.P. 8' S.L. 15'
- (21) 12" 15' S.P. 15' R.P. 8' S.L. 15'
- (22) 12" 15' S.P. 15' R.P. 8' S.L. 15'
- (23) 12" 15' S.P. 15' R.P. 8' S.L. 15'
- (24) 12" 15' S.P. 15' R.P. 8' S.L. 15'
- (25) 12" 15' S.P. 15' R.P. 8' S.L. 15'
- (26) 12" 15' S.P. 15' R.P. 8' S.L. 15'
- (27) 12" 15' S.P. 15' R.P. 8' S.L. 15'
- (28) 12" 15' S.P. 15' R.P. 8' S.L. 15'
- (29) 12" 15' S.P. 15' R.P. 8' S.L. 15'
- (30) 12" 15' S.P. 15' R.P. 8' S.L. 15'

GRAPHIC SCALE(S)



NON-MANDATORY PRE-BID CONFERENCE

College Drive Roundabout

10:00 a.m. February 15, 2015

	NAME	COMPANY	PHONE NUMBER	FAX NUMBER	E-MAIL
1.	Lindy Oppert	CITY OF SUFFOLK	757-514-1522	757-514-1524	CNOBFLEET@SUFFOLKVA.US
2.	Chuck Weil	City of Suffolk	757-574-7716	"	cweil@so.folkva.us
3.	Catherine Jones	Branch Civil	757-4201140		BCIEstimating@branchcivil.com
4.	Jay Williams	Shamrock construction	757-342-1080		Shamrock.c@17e.com
5.	Foster Spruill	BRANCH CIVIL INC.	757-420-1140		BCIEstimating@BranchCivil.co
6.	SIDNEY KAZZWOOD	BRANSCONE INC.	757-806-9102		Shazwood@branscone.com
7.	Kenneth L Mitchell	BRANSCONE	488-4627		mitchellk@branscone.com
8.	Bobby Wynne	Raxton Contractors	757-803-8833		BobbyC.paxtoncon.com
9.	Aaron Kitchum	Blair Bros., Inc	757-617-3253		a.kitchum@blairbros.com
10.	Lee Boares	BUMR Bros., Inc.	757-538-1010		rogers@blairbros.com
11.	Jonathan Barrett	Highground Services	757-642-3957		jbarrett@highground services.com
12.	Len Turner	Highground Services	757-376-8368		Lturner@highground services.com
13.	Jason McGehee	Eure Inc	757-435-5511		JMcGehee@eure.com

AD-1 2/22/17

14.	Brandon Eiger	Publ. Works	514-7603	Stogers Suffolk Va US
15.	Jan Johnston	CRACK NEXSEN	351-1205	johnston@cracknexsen.com
16.				
17.				
18.				
19.				
20.				
21.				
22.				
23.				
24.				
25.				
26.				
27.				
28.				
29.				
30.				