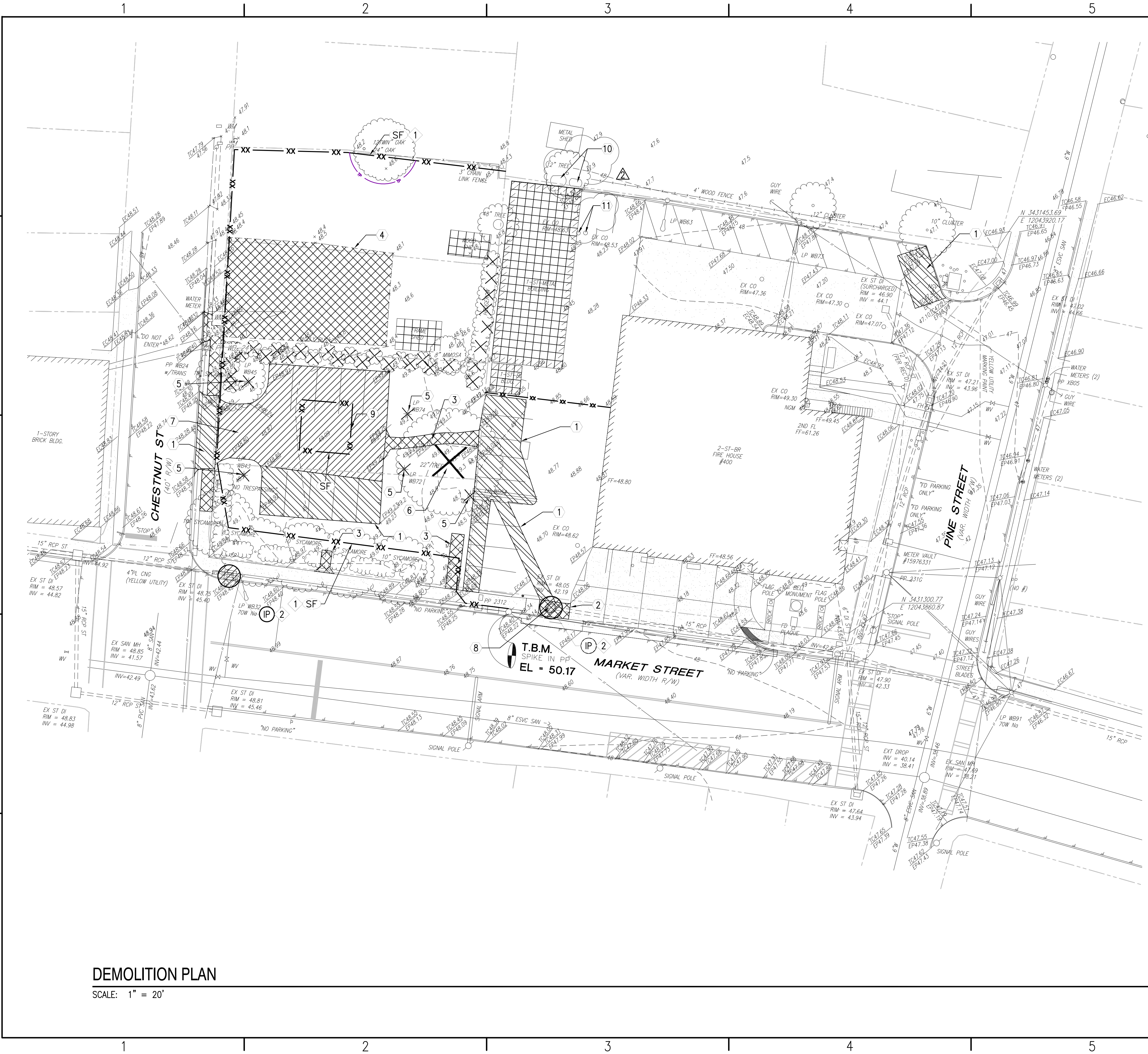


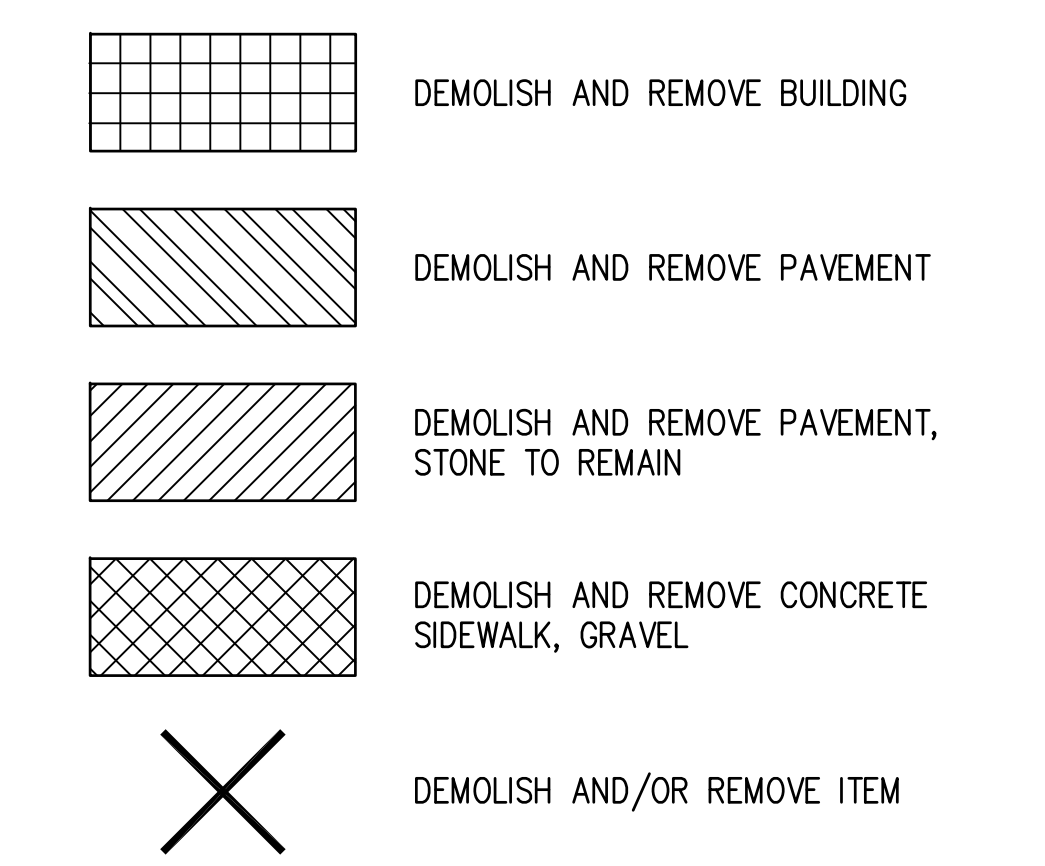
I:\Projects\1600A\Engineering\Drawings & Exhibits\DWG\SHEETS\1600A_Civil_Sheets.dwg [CD101] - Friday, June 21, 2019, 10:28am



SHEET NOTES:

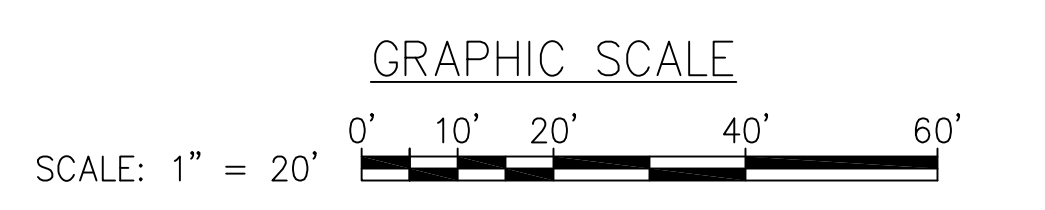
- REFER TO SHEET C-004 FOR LEGEND AND ABBREVIATIONS.
 - REFER TO SHEET V-101 FOR SURVEY NOTES.
 - REPAIR GRASS DISTURBED BY CONSTRUCTION; REFER TO SHEET C-002 AND C-003 FOR TEMPORARY AND PERMANENT SEEDING REQUIREMENTS.
 - LOCATION OF THE STOCKPILE/STAGING AREA
- DEMOLITION KEYNOTES:**
- SAWCUT AND REMOVE BITUMINOUS CONCRETE PAVEMENT
 - SAWCUT AND REMOVE CONCRETE PAVEMENT
 - REMOVE CONCRETE SIDEWALK
 - REMOVE GRAVEL
 - REMOVE LIGHT POLE
 - REMOVE TREE OR SHRUB
 - REMOVE BITUMINOUS CONCRETE PAVEMENT, BASE STONE TO REMAIN; SUBGRADE TO REMAIN UNDISTURBED
 - REPAIR OR REPLACE RIM AS NEEDED FOR INSTALLATION OF NEW APRON
 - STOCKPILE/STAGING AREA (NOTE: ALL EARTHEN STOCKPILES AND SURCHARGE MOUNDS GREATER THAN 10' IN HEIGHT OR WITH SIDE SLOPES GREATER THAN 3:1 MUST BE ENCAPSULATED BY A DOUBLE ROW OF SILT FENCE, WHERE THE FIRST ROW IS 10' FROM THE TOE OF SLOPE AND THE SECOND ROW IS OFFSET 5' FROM THE FIRST)
 - COORDINATE WITH OWNER TO REMOVE ABOVEGROUND FUEL TANKS
 - CAP AND ABANDON SANITARY SEWER

DEMOLITION LEGEND

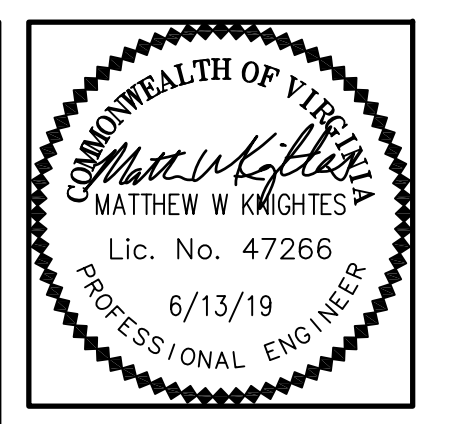


E&S KEYNOTES:

- REFER TO SHEET C-501 FOR E&S DETAILS
- SILT FENCE - SEE PLATE 3.05-1 & 3.05-2
 - INLET PROTECTION - SEE PLATE 3.07-2



DEMOLITION PLAN
SCALE: 1" = 20'



REVISIONS	DESCRIPTION	DATE	PROJ MGR	MWK	JMT	JMT	DMW
ADDENDUM 2		6/21/19					

PROJECT NO	16004A	DATE	6/13/19
------------	--------	------	---------

SUFFOLK FIRE STATION NO. 1 PARKING LOT MODIFICATION

SUFFOLK VIRGINIA

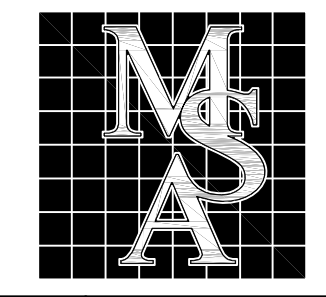
DEMOLITION PLAN

SHEET TITLE



1909 CYPRESS AVENUE
VIRGINIA BEACH, VA 23462-3764
(757) 417-0140

SHEET NUMBER
CD101



MSA, P.C.
Environmental Sciences • Planning • Surveying
Civil & Environmental Engineering • Landscape Architecture

5032 Rouse Drive, Suite 100
Virginia Beach, VA 23462-3764
757-490-9264 | www.msaonline.com