

DEMOLITION NOTES THIS SHEET

- 1 REFER TO "ELECTRICAL RISER DIAGRAM - DEMOLITION" SHEET 67ME-2 FOR ADDITIONAL REQUIREMENTS.
- 2 REMOVE EXISTING FEEDER, REFER TO "ELECTRICAL RISER DIAGRAM - DEMOLITION", SHEET 67ME-2, TYPICAL.
- 3 REMOVE PUMP MOTOR CONNECTION, REFER TO "ELECTRICAL RISER DIAGRAM - DEMOLITION", SHEET 67ME-2 FOR ADDITIONAL REQUIREMENTS.
- 4 REMOVE EXISTING EXHAUST FAN, THERMOSTAT, AND DISCHARGE DOWNER, PATCH WITH BRICK AND CAJ TO MATCH ADJACENT CONDITIONS.
- 5 REMOVE EXISTING CIRCUIT BACK TO SOURCE.
- 6 REMOVE WIRING TROUGH AND JUNCTION BOX BELOW.
- 7 REMOVE WET WELL LEVEL EQUIPMENT.
- 8 REMOVE EXISTING EQUIPMENT.
- 9 REMOVE POP ALARM LIGHT.
- 10 REMOVE EXISTING CONDUIT STUBBED DOWN THROUGH CEILING.
- 11 REMOVE EXISTING RECEPTACLE.
- 12 REMOVE EXISTING LIGHTING AND SWITCHING.
- 13 REMOVE PUMP MOTOR FEEDER AND FLOAT CONDUITS.
- 14 REMOVE GENERATOR CONNECTION RECEPTACLE AND FEEDER.
- 15 DISCONNECT AND REMOVE EXISTING RAIN GAUGE WIRING AND ASSOCIATED CONDUIT AS REQUIRED TO ACCOMMODATE NEW WORK. EXISTING RAIN GAUGE TO REMAIN, REFER TO NEW WORK PLANS.
- 16 REMOVE SERVICE GROUND TO WATER PIPING.

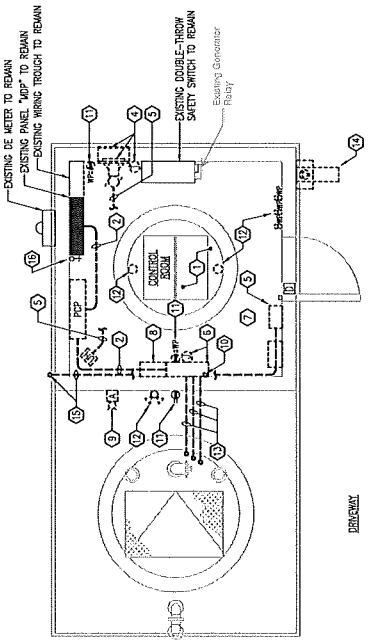
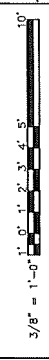
NEW WORK NOTES THIS SHEET

- 1 ALL WORK WITHIN THE WET WELL SHALL BE SUITABLE FOR CLASS 1, DIVISION 1 (GROUP D) HAZARDOUS LOCATIONS.
- 2 REFER TO "WASTEWATER PUMP STATION INSTRUMENTATION AND CONTROLS" DRAWINGS INCLUDED WITH THE CONTRACT DOCUMENTS FOR PROTECTIVE METAL ENCLOSURE REQUIREMENTS.
- 3 CONNECT FAN SWITCH TO BYPASS THERMOSTAT AND OVERSIZE FAN WHEN SWITCH IS IN THE ON POSITION.
- 4 REFER TO "ELECTRICAL RISER DIAGRAM - NEW WORK" SHEET 67ME-4 FOR ADDITIONAL REQUIREMENTS.
- 5 TC WITH RAIN GAUGE WIRING AS REQUIRED FROM TELLER TO EXISTING RAIN GAUGE, RUN OVERHEAD IN CONTROL ROOM.
- 6 PROPOSED ROUTING FOR FEEDER CONDUIT AND WIRING, REFER TO "ELECTRICAL RISER DIAGRAM - NEW WORK" SHEET 67ME-2, TYPICAL.
- 7 PUMP MOTOR #1 TERMINAL BLOCK BOX.
- 8 PUMP MOTOR #2 TERMINAL BLOCK BOX.
- 9 PUMP #1 MOTOR STARTER CABINET.
- 10 PUMP #2 MOTOR STARTER CABINET.

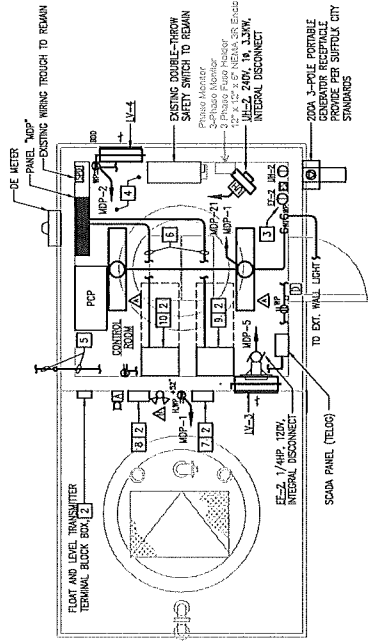
EXISTING CONDITIONS NOTE:

THE CONTRACTOR SHALL VISIT THE EXISTING PUMP STATION SITE PRIOR TO BID IN ORDER TO BECOME FAMILIAR WITH THE EXISTING CONDITIONS AND TO AVOID CONFLICTS. LACK OF KNOWLEDGE OF EXISTING CONDITIONS SHALL NOT BE A BASIS FOR CHANGE ORDERS.

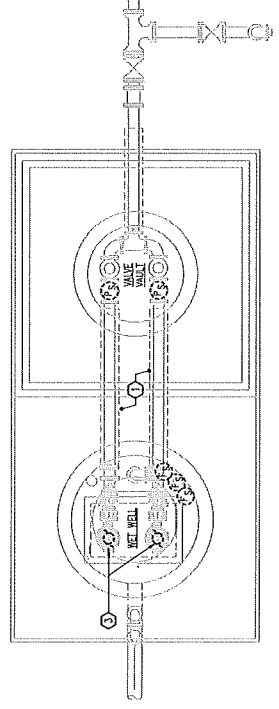
GRAPHIC SCALE
3/8" = 1'-0"



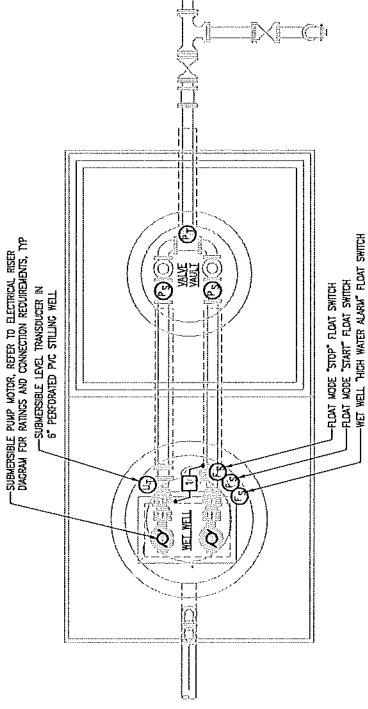
HVAC-ELECTRICAL UPPER LEVEL PLAN - DEMOLITION
SCALE: 3/8" = 1'-0"



HVAC-ELECTRICAL UPPER LEVEL PLAN - NEW WORK
SCALE: 3/8" = 1'-0"



HVAC-ELECTRICAL LOWER LEVEL PLAN - DEMOLITION
SCALE: 3/8" = 1'-0"



HVAC-ELECTRICAL LOWER LEVEL PLAN - NEW WORK
SCALE: 3/8" = 1'-0"

Kimley»Horn
CONSULTING ENGINEERS AND ARCHITECTS, INC.
1000 WEST 10TH STREET, SUITE 1000, LINCOLN, NE 68502
PH: 402.476.1000 FAX: 402.476.1001
WWW.KIMLEYHORN.COM

KSA PROJECT
177019084
DATE
MAY 2021
SCALE AS SHOWN
DESIGNED BY PART
DRAWN BY PART
CHECKED BY KCA
ISSUED BY KCA

STATE OF NEBRASKA
SEAL OF THE REGISTERED PROFESSIONAL ENGINEER
KIMLEY HORN
No. 0000000000
EXPIRES 12/31/2021
TOTAL 2/10/21

PUMP STATION NO. 50 AND NO. 67
REHABILITATION
PREPARED FOR
CITY OF SUFFOLK

HVAC - ELECTRICAL FLOOR
PLANS
67ME-2
SHEET NUMBER 22 OF 28

This document, together with any computer and/or digital printed files, is the property of Kimley-Horn and Associates, Inc. and shall remain the property of Kimley-Horn and Associates, Inc. It is to be used only for the project and site for which it was prepared. It is not to be reproduced, stored in a retrieval system, or transmitted in any form or by any means, electronic, mechanical, photocopying, recording, or by any information storage and retrieval system, without the prior written permission of Kimley-Horn and Associates, Inc.